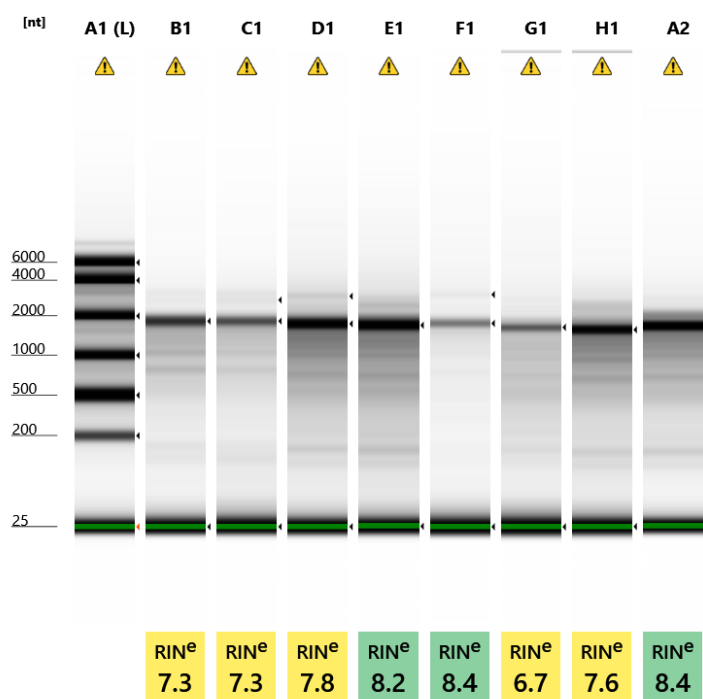



## Filename: 2020-08-18 - 18.24.04.RNA

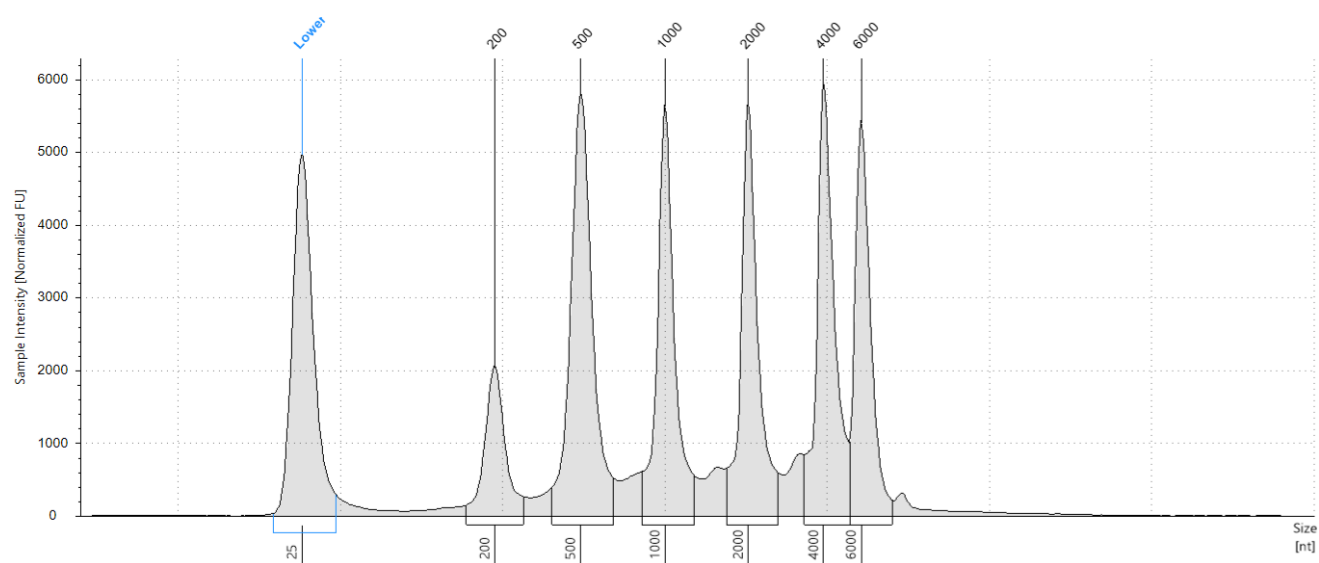


Default image (Contrast 100%)

## Sample Info

Well	RIN <sup>e</sup>	28S/18S (Area)	Conc. [ng/μl]	Sample Description	Alert	Observations
A1	-	-	116	Ladder	⚠	Caution! Expired ScreenTape device; Ladder
B1	7.3	-	25.1	750	⚠	Caution! Expired ScreenTape device; The upper ribosomal fragment has degraded
C1	7.3	0.1	20.5	785	⚠	Caution! Expired ScreenTape device; Sample concentration outside functional range for RIN <sup>e</sup> and the assay; The upper ribosomal fragment has degraded
D1	7.8	0.1	46.4	849	⚠	Caution! Expired ScreenTape device; The upper ribosomal fragment has degraded
E1	8.2	-	48.8	859	⚠	Caution! Expired ScreenTape device; The upper ribosomal fragment has degraded
F1	8.4	0.1	12.0	737	⚠	Caution! Expired ScreenTape device; Sample concentration outside functional range for RIN <sup>e</sup> and the assay; The upper ribosomal fragment has degraded
G1	6.7	-	20.9	735	⚠	Caution! Expired ScreenTape device; Sample concentration outside functional range for RIN <sup>e</sup> and the assay; The upper ribosomal fragment has degraded
H1	7.6	-	38.7	797	⚠	Caution! Expired ScreenTape device; The upper ribosomal fragment has degraded

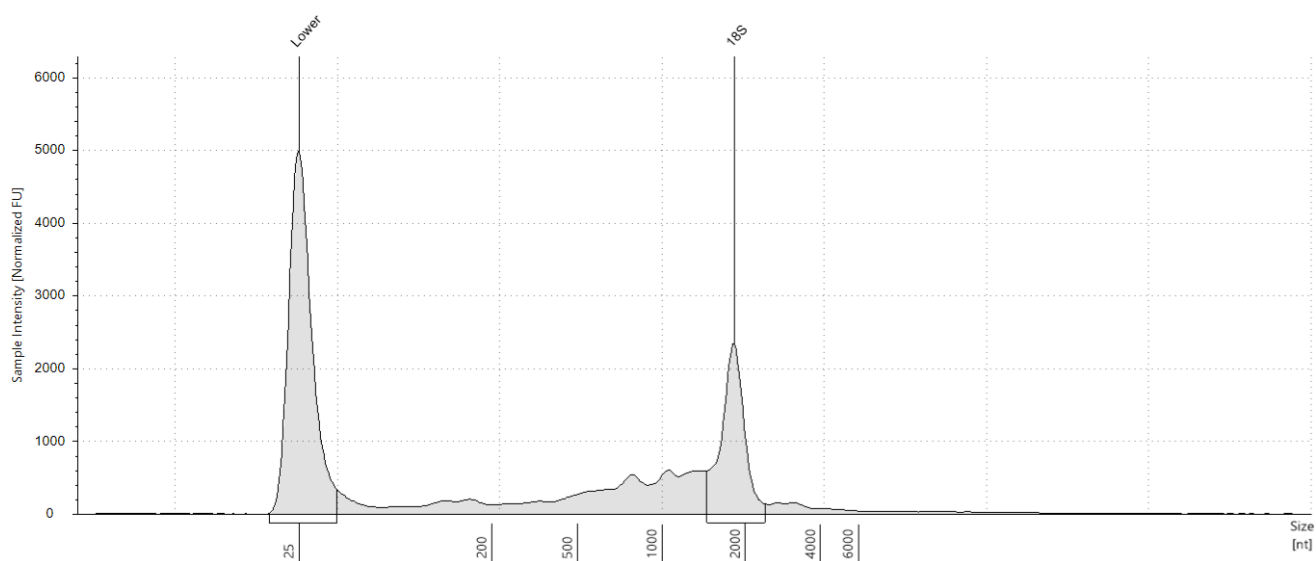
A2	8.4	-	44.7	777		Caution! Expired ScreenTape device; The upper ribosomal fragment has degraded
----	-----	---	------	-----	---	---

**A1: Ladder****Sample Table**

Well	RINe	28S/18S (Area)	Conc. [ng/μl]	Sample Description	Alert	Observations
A1	-	-	116	Ladder	⚠	Caution! Expired ScreenTape device; Ladder

**Peak Table**

Size [nt]	Calibrated Conc. [ng/μl]	Assigned Conc. [ng/μl]	Peak Molarity [nmol/l]	% Integrated Area	Peak Comment	Observations
25	40.0	40.0	4710	-		Lower Marker
200	7.92	-	116	7.71		
500	23.5	-	138	22.92		
1000	18.1	-	53.2	17.59		
2000	17.8	-	26.2	17.33		
4000	19.4	-	14.3	18.90		
6000	16.0	-	7.84	15.56		

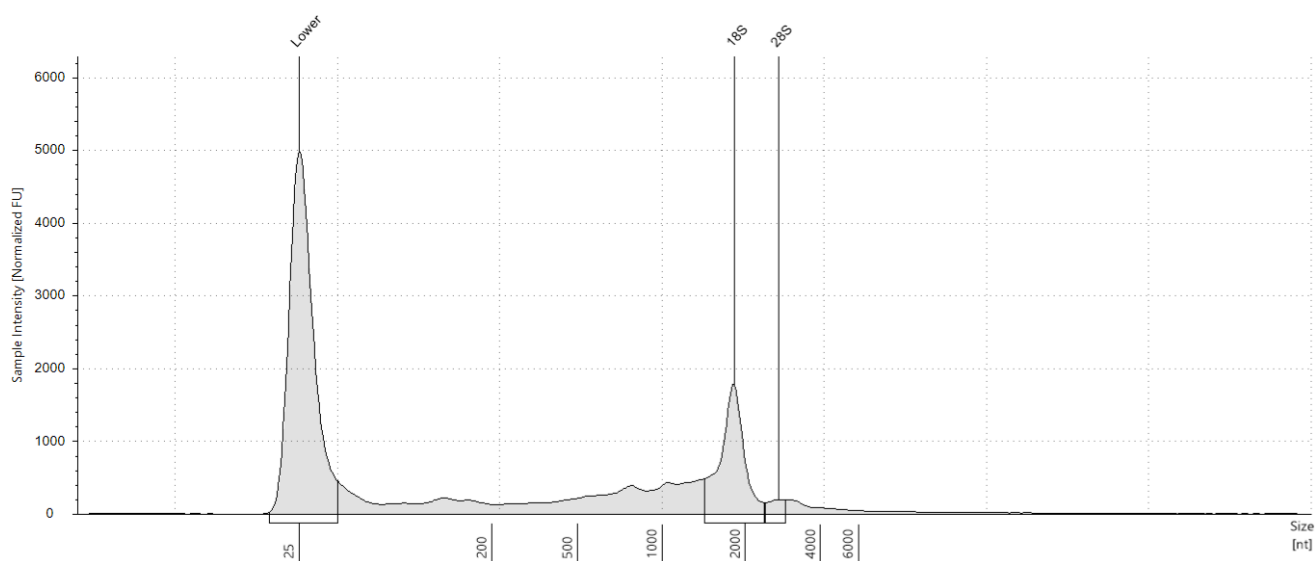
**B1: 750****Sample Table**

Well	RINe	28S/18S (Area)	Conc. [ng/μl]	Sample Description	Alert	Observations
B1	7.3	-	25.1	750		Caution! Expired ScreenTape device; The upper ribosomal fragment has degraded

**Peak Table**

Size [nt]	Calibrated Conc. [ng/μl]	Assigned Conc. [ng/μl]	Peak Molarity [nmol/l]	% Integrated Area	Peak Comment	Observations
25	40.0	40.0	4710	-		Lower Marker
1826	9.06	-	14.6	100.00		18S

## C1: 785

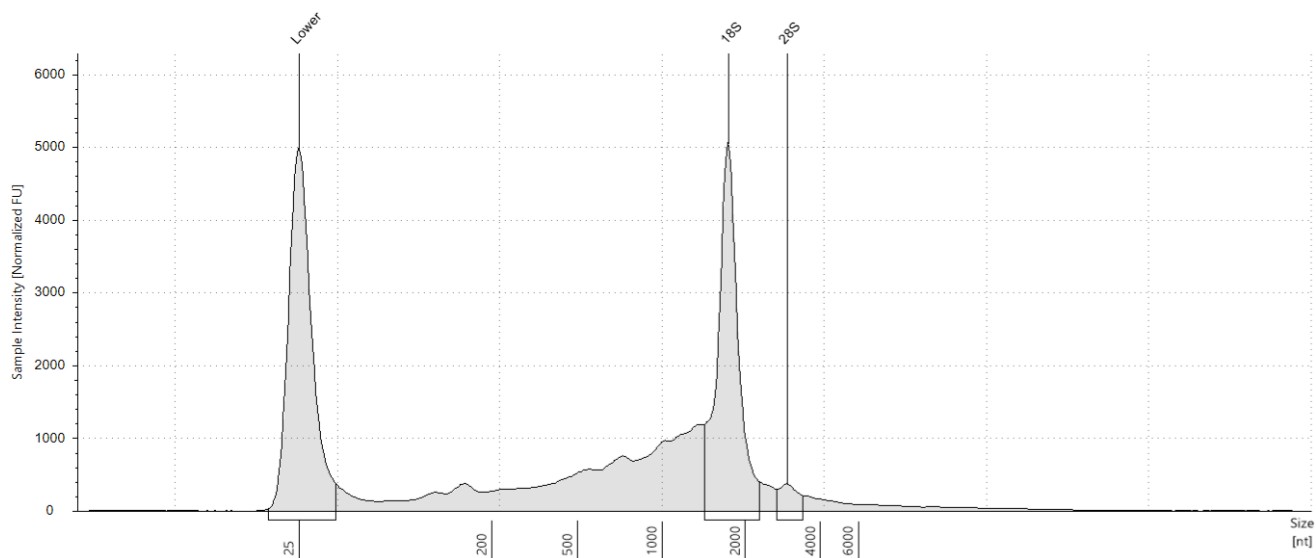


## Sample Table

Well	RINe	28S/18S (Area)	Conc. [ng/μl]	Sample Description	Alert	Observations
C1	7.3	0.1	20.5	785	⚠	Caution! Expired ScreenTape device; Sample concentration outside functional range for RINe and the assay; The upper ribosomal fragment has degraded

## Peak Table

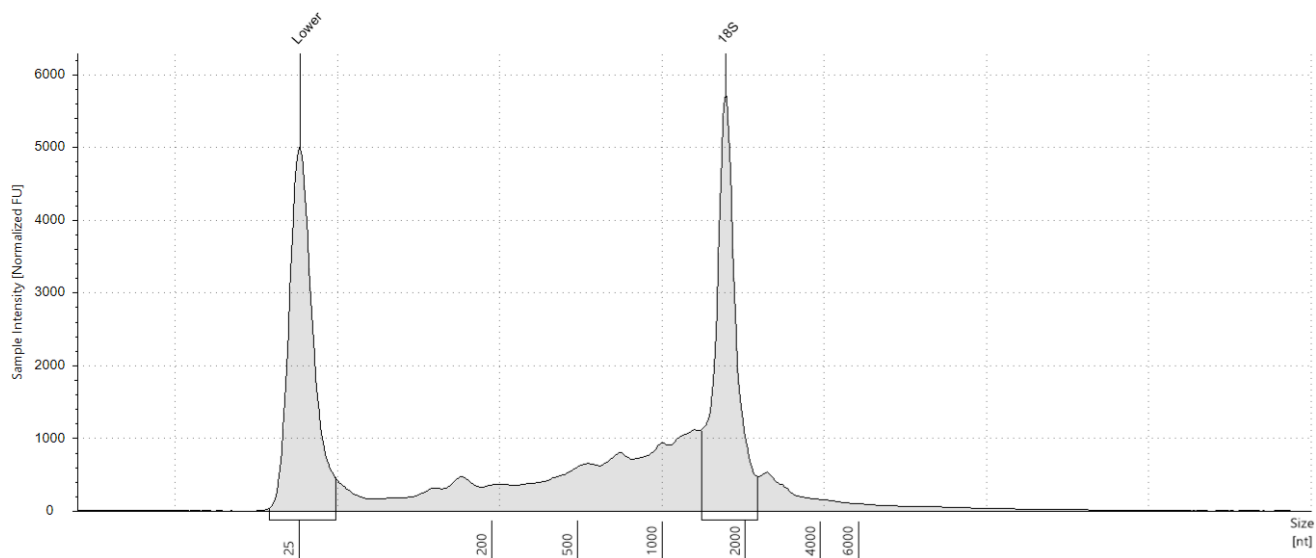
Size [nt]	Calibrated Conc. [ng/μl]	Assigned Conc. [ng/μl]	Peak Molarity [nmol/l]	% Integrated Area	Peak Comment	Observations
25	40.0	40.0	4710	-		Lower Marker
1826	6.62	-	10.7	92.42		18S
2724	0.543	-	0.586	7.58		28S

**D1: 849****Sample Table**

Well	RINe	28S/18S (Area)	Conc. [ng/μl]	Sample Description	Alert	Observations
D1	7.8	0.1	46.4	849	⚠	Caution! Expired ScreenTape device; The upper ribosomal fragment has degraded

**Peak Table**

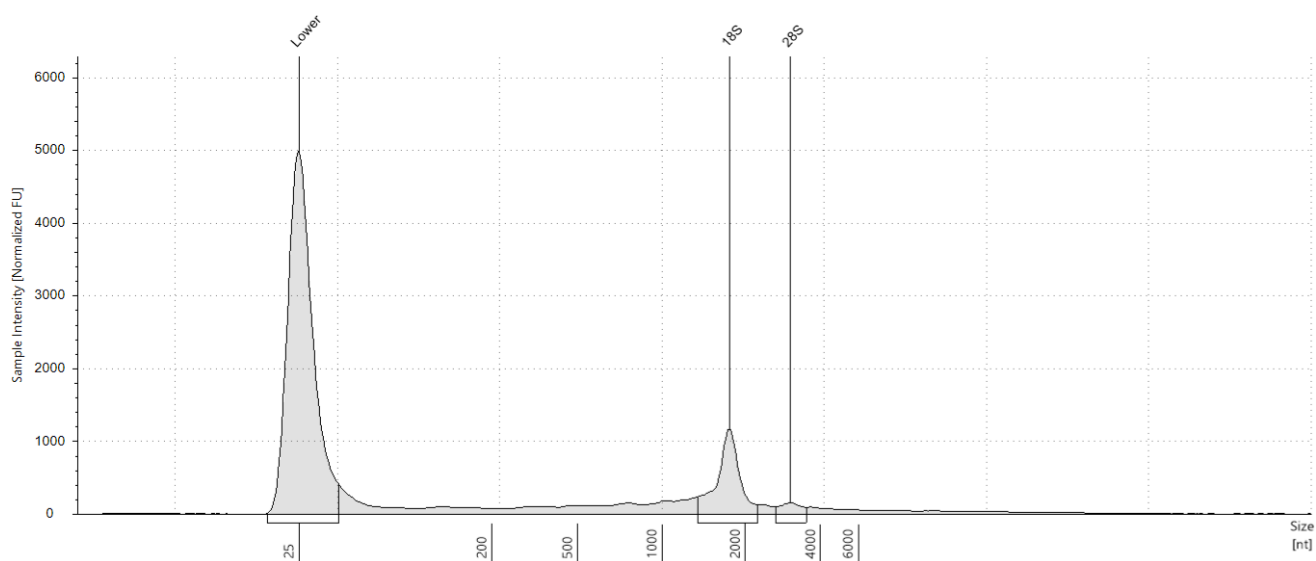
Size [nt]	Calibrated Conc. [ng/μl]	Assigned Conc. [ng/μl]	Peak Molarity [nmol/l]	% Integrated Area	Peak Comment	Observations
25	40.0	40.0	4710	-		Lower Marker
1741	17.4	-	29.5	93.46		18S
2932	1.22	-	1.22	6.54		28S

**E1: 859****Sample Table**

Well	RINe	28S/18S (Area)	Conc. [ng/μl]	Sample Description	Alert	Observations
E1	8.2	-	48.8	859		Caution! Expired ScreenTape device; The upper ribosomal fragment has degraded

**Peak Table**

Size [nt]	Calibrated Conc. [ng/μl]	Assigned Conc. [ng/μl]	Peak Molarity [nmol/l]	% Integrated Area	Peak Comment	Observations
25	40.0	40.0	4710	-		Lower Marker
1689	19.1	-	33.2	100.00		18S

**F1: 737****Sample Table**

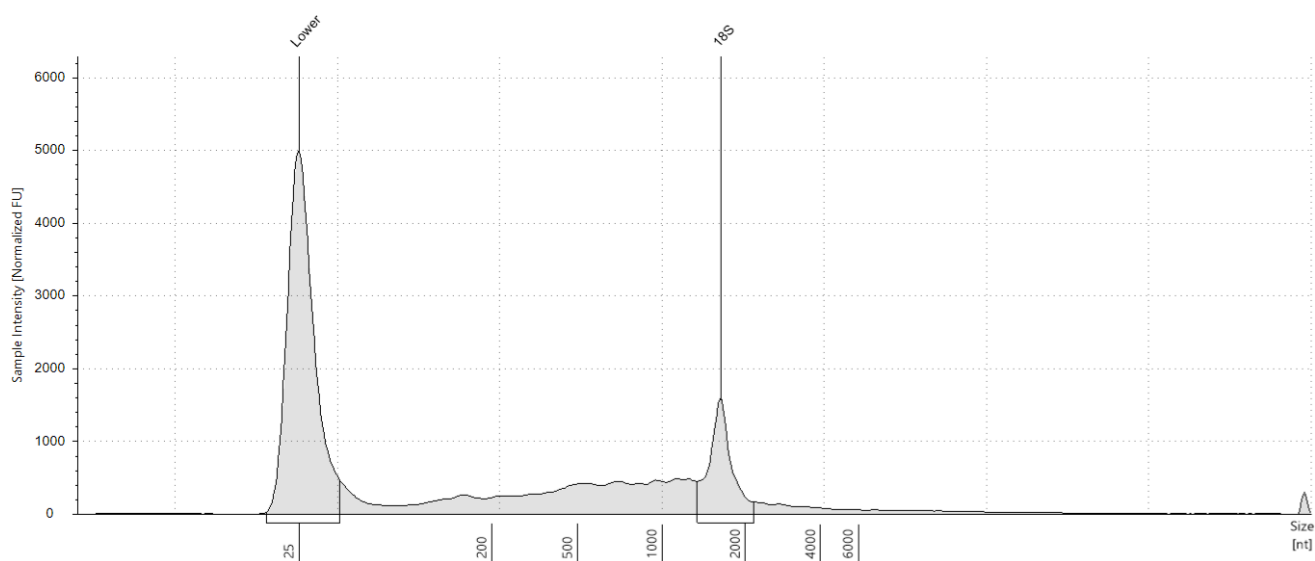
Well	RINe	28S/18S (Area)	Conc. [ng/μl]	Sample Description	Alert	Observations
F1	8.4	0.1	12.0	737	⚠	Caution! Expired ScreenTape device; Sample concentration outside functional range for RINe and the assay; The upper ribosomal fragment has degraded

**Peak Table**

Size [nt]	Calibrated Conc. [ng/μl]	Assigned Conc. [ng/μl]	Peak Molarity [nmol/l]	% Integrated Area	Peak Comment	Observations
25	40.0	40.0	4710	-		Lower Marker
1760	4.00	-	6.68	88.66		18S
3045	0.512	-	0.494	11.34		28S



## G1: 735

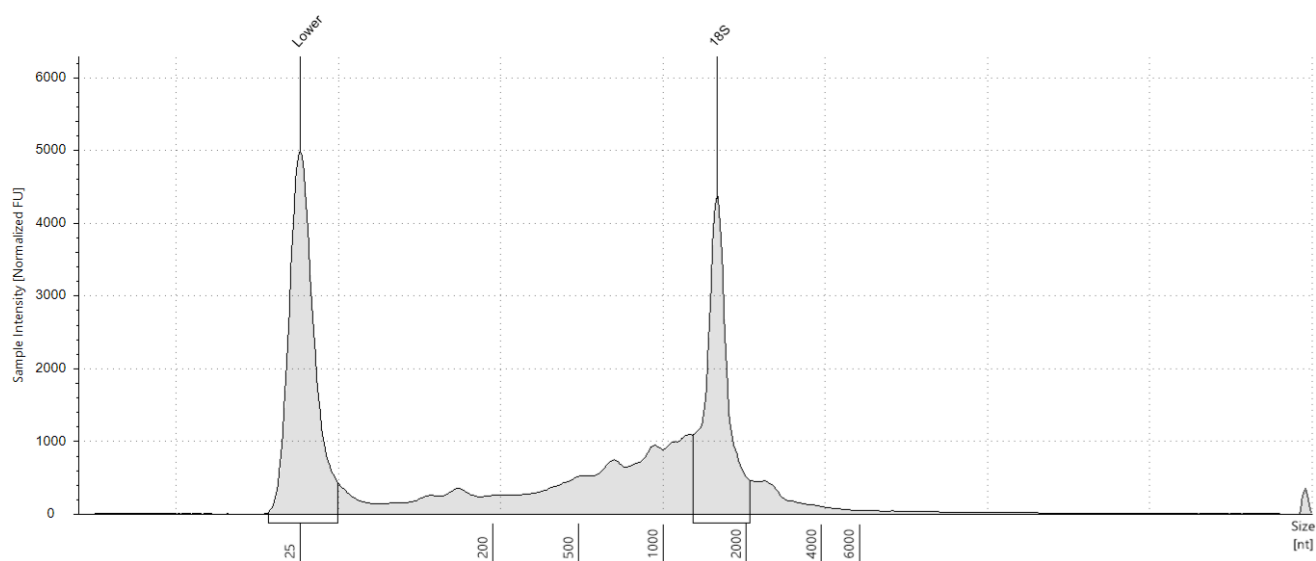


## Sample Table

Well	RINe	28S/18S (Area)	Conc. [ng/μl]	Sample Description	Alert	Observations
G1	6.7	-	20.9	735	⚠	Caution! Expired ScreenTape device; Sample concentration outside functional range for RINe and the assay; The upper ribosomal fragment has degraded

## Peak Table

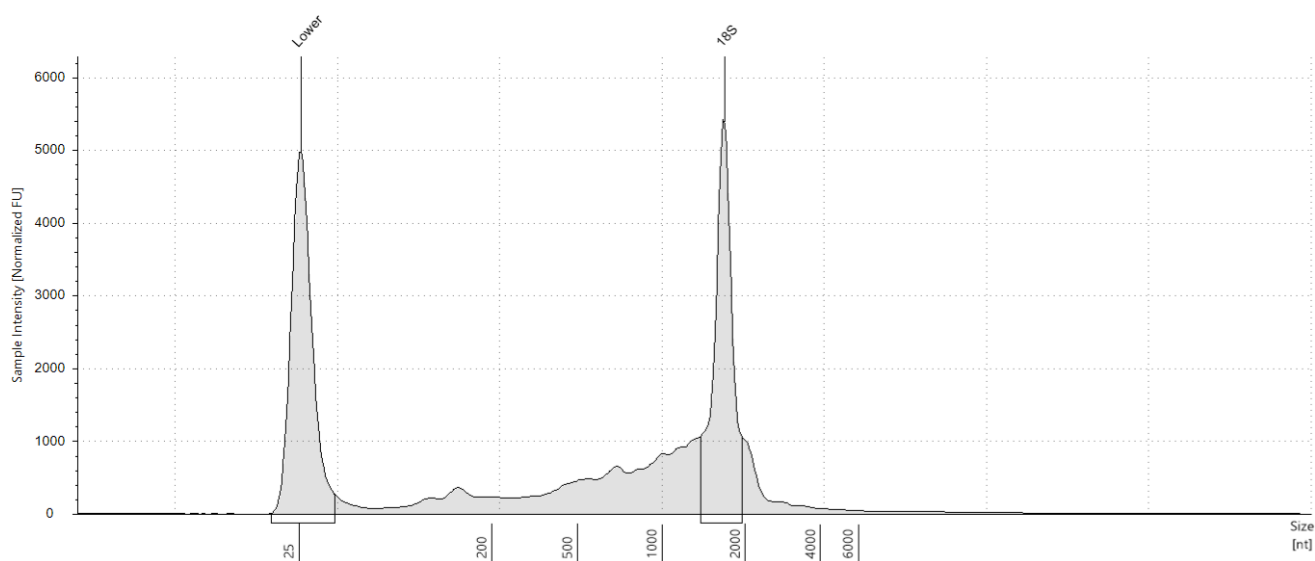
Size [nt]	Calibrated Conc. [ng/μl]	Assigned Conc. [ng/μl]	Peak Molarity [nmol/l]	% Integrated Area	Peak Comment	Observations
25	40.0	40.0	4710	-		Lower Marker
1640	5.07	-	9.09	100.00		18S

**H1: 797****Sample Table**

Well	RINe	28S/18S (Area)	Conc. [ng/μl]	Sample Description	Alert	Observations
H1	7.6	-	38.7	797	⚠	Caution! Expired ScreenTape device; The upper ribosomal fragment has degraded

**Peak Table**

Size [nt]	Calibrated Conc. [ng/μl]	Assigned Conc. [ng/μl]	Peak Molarity [nmol/l]	% Integrated Area	Peak Comment	Observations
25	40.0	40.0	4710	-		Lower Marker
1566	14.4	-	27.0	100.00		18S

**A2: 777****Sample Table**

Well	RINe	28S/18S (Area)	Conc. [ng/μl]	Sample Description	Alert	Observations
A2	8.4	-	44.7	777	⚠	Caution! Expired ScreenTape device; The upper ribosomal fragment has degraded

**Peak Table**

Size [nt]	Calibrated Conc. [ng/μl]	Assigned Conc. [ng/μl]	Peak Molarity [nmol/l]	% Integrated Area	Peak Comment	Observations
25	40.0	40.0	4710	-		Lower Marker
1671	17.8	-	31.4	100.00		18S