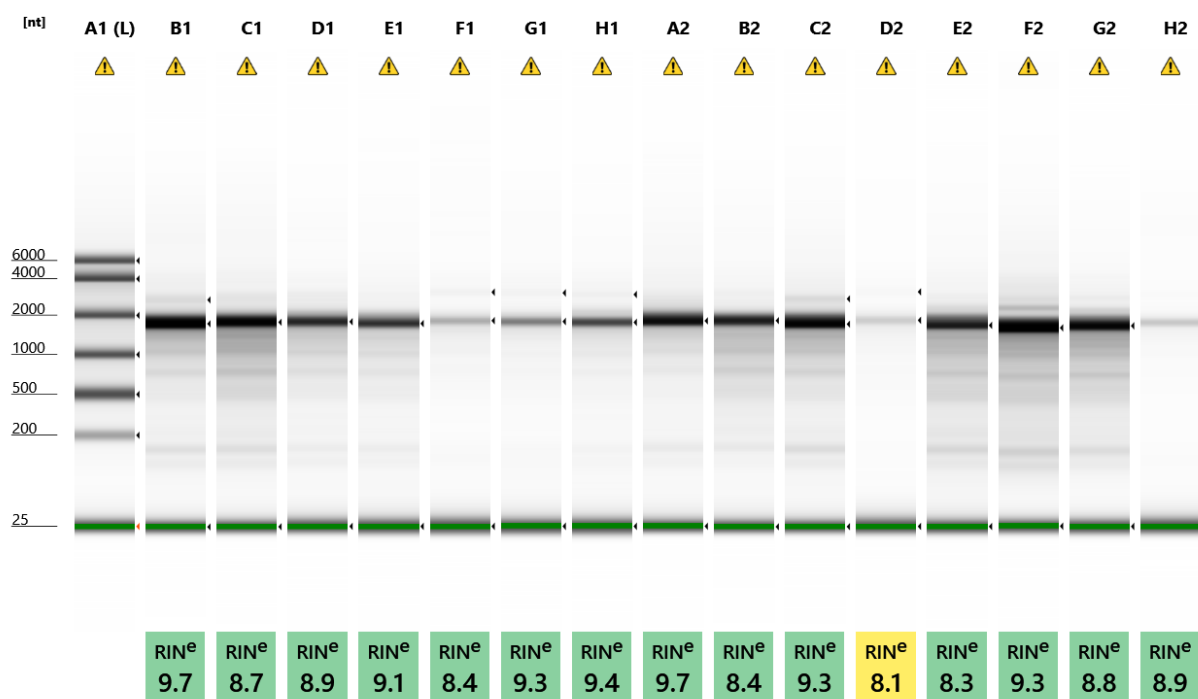









Filename: 2020-08-25 - 16.41.23.RNA

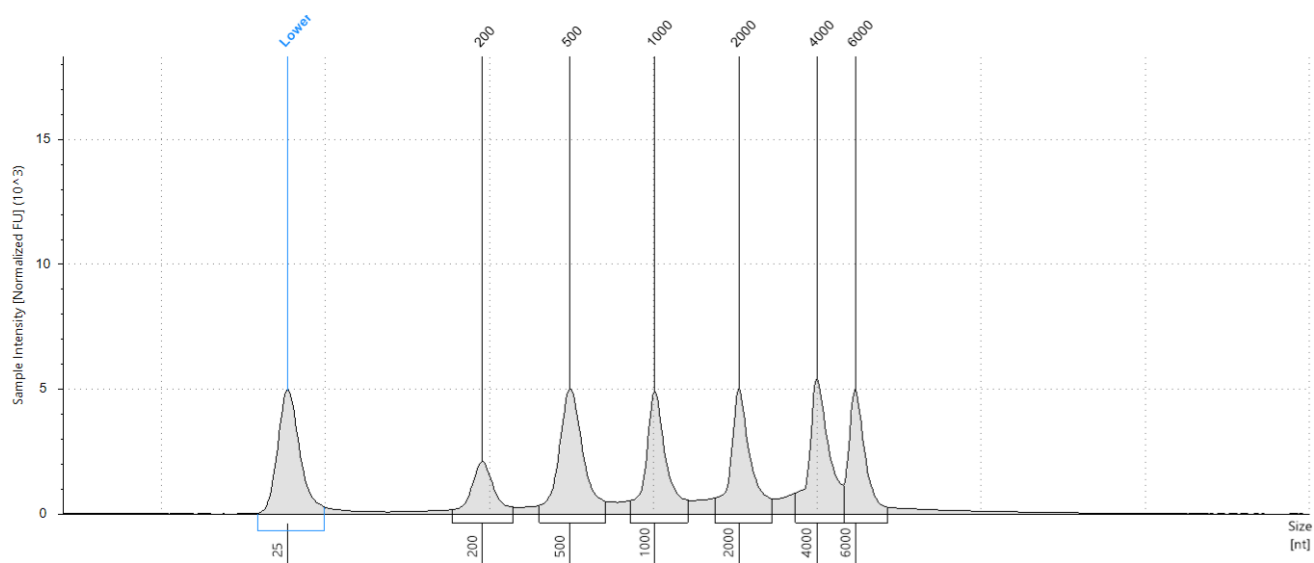


Default image (Contrast 100%)

## Sample Info

Well	RIN <sup>e</sup>	28S/18S (Area)	Conc. [ng/μl]	Sample Description	Alert	Observations
A1	-	-	110	Ladder	⚠	Caution! Expired ScreenTape device; Ladder
B1	9.7	0.1	98.2	417	⚠	Caution! Expired ScreenTape device; The upper ribosomal fragment has degraded
C1	8.7	-	98.9	359	⚠	Caution! Expired ScreenTape device; The upper ribosomal fragment has degraded
D1	8.9	-	51.4	451	⚠	Caution! Expired ScreenTape device; The upper ribosomal fragment has degraded
E1	9.1	-	42.7	367	⚠	Caution! Expired ScreenTape device; The upper ribosomal fragment has degraded
F1	8.4	0.1	15.4	379	⚠	Caution! Expired ScreenTape device; Sample concentration outside functional range for RIN <sup>e</sup> and the assay; The upper ribosomal fragment has degraded
G1	9.3	0.1	20.9	402	⚠	Caution! Expired ScreenTape device; Sample concentration outside functional range for RIN <sup>e</sup> and the assay; The upper ribosomal fragment has degraded
H1	9.4	0.1	30.7	458	⚠	Caution! Expired ScreenTape device; The upper ribosomal fragment has degraded
A2	9.7	-	64.3	445	⚠	Caution! Expired ScreenTape device; The upper ribosomal fragment has degraded

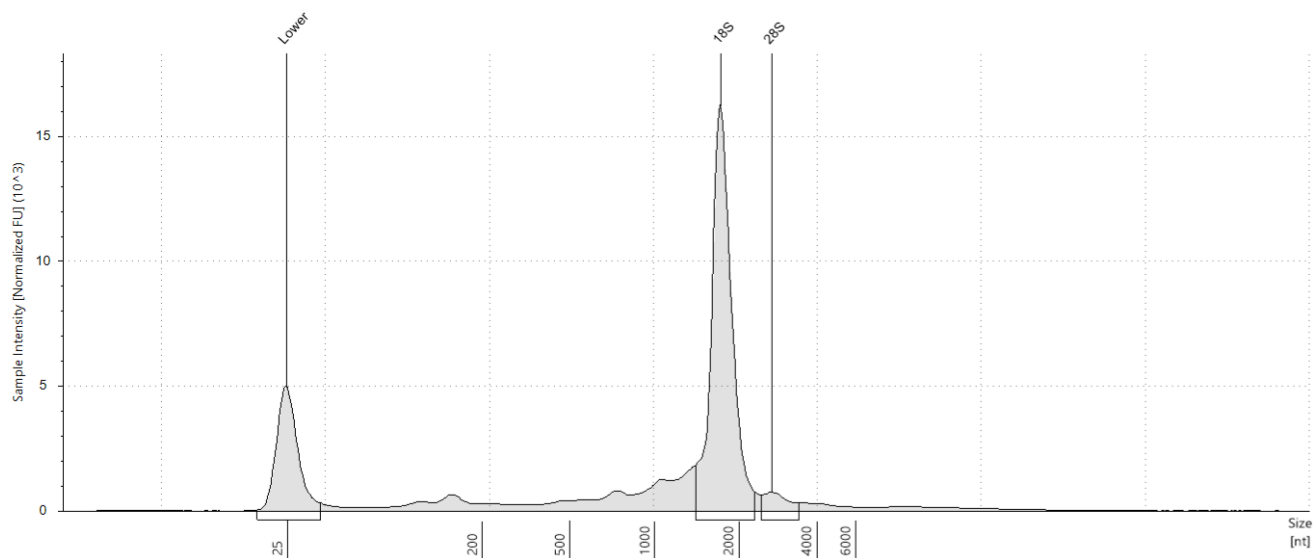
B2	8.4	-	66.9	322		Caution! Expired ScreenTape device; The upper ribosomal fragment has degraded
C2	9.3	0.1	89.1	397		Caution! Expired ScreenTape device; The upper ribosomal fragment has degraded
D2	8.1	0.1	10.9	825		Caution! Expired ScreenTape device; Sample concentration outside functional range for RINe and the assay; The upper ribosomal fragment has degraded
E2	8.3	-	76.2	829		Caution! Expired ScreenTape device; The upper ribosomal fragment has degraded
F2	9.3	-	119	717		Caution! Expired ScreenTape device; The upper ribosomal fragment has degraded
G2	8.8	-	80.4	801		Caution! Expired ScreenTape device; The upper ribosomal fragment has degraded
H2	8.9	0.1	10.0	783		Caution! Expired ScreenTape device; Sample concentration outside functional range for RINe and the assay; The upper ribosomal fragment has degraded

**A1: Ladder****Sample Table**

Well	RINe	28S/18S (Area)	Conc. [ng/μl]	Sample Description	Alert	Observations
A1	-	-	110	Ladder	⚠	Caution! Expired ScreenTape device; Ladder

**Peak Table**

Size [nt]	Calibrated Conc. [ng/μl]	Assigned Conc. [ng/μl]	Peak Molarity [nmol/l]	% Integrated Area	Peak Comment	Observations
25	40.0	40.0	4710	-		Lower Marker
200	8.42	-	124	8.67		
500	21.3	-	125	21.96		
1000	17.1	-	50.4	17.65		
2000	17.2	-	25.4	17.76		
4000	18.7	-	13.7	19.23		
6000	14.3	-	7.01	14.73		

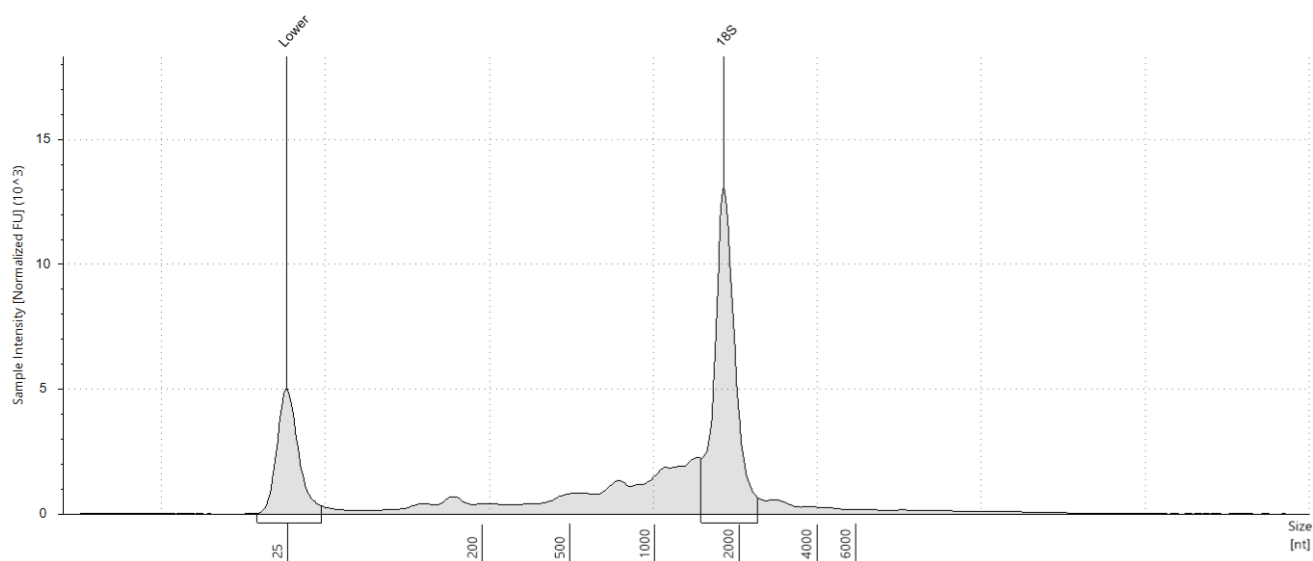
**B1: 417****Sample Table**

Well	RINe	28S/18S (Area)	Conc. [ng/μl]	Sample Description	Alert	Observations
B1	9.7	0.1	98.2	417	⚠	Caution! Expired ScreenTape device; The upper ribosomal fragment has degraded

**Peak Table**

Size [nt]	Calibrated Conc. [ng/μl]	Assigned Conc. [ng/μl]	Peak Molarity [nmol/l]	% Integrated Area	Peak Comment	Observations
25	40.0	40.0	4710	-		Lower Marker
1736	60.4	-	102	94.72		18S
2703	3.37	-	3.66	5.28		28S

## C1: 359

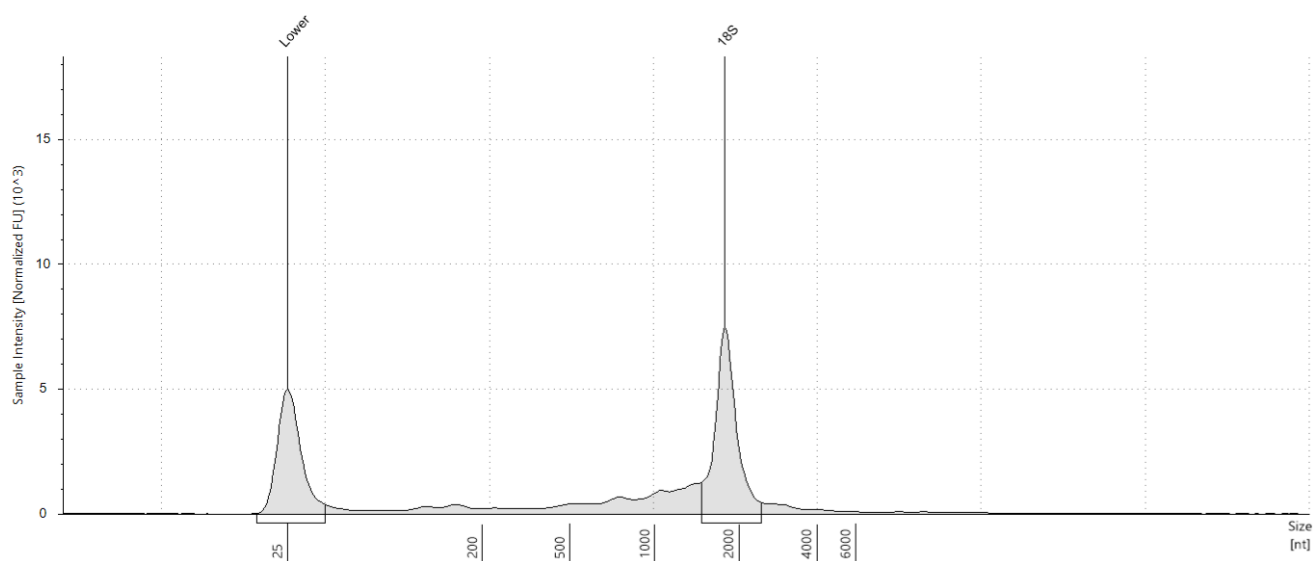


## Sample Table

Well	RINe	28S/18S (Area)	Conc. [ng/μl]	Sample Description	Alert	Observations
C1	8.7	-	98.9	359	⚠	Caution! Expired ScreenTape device; The upper ribosomal fragment has degraded

## Peak Table

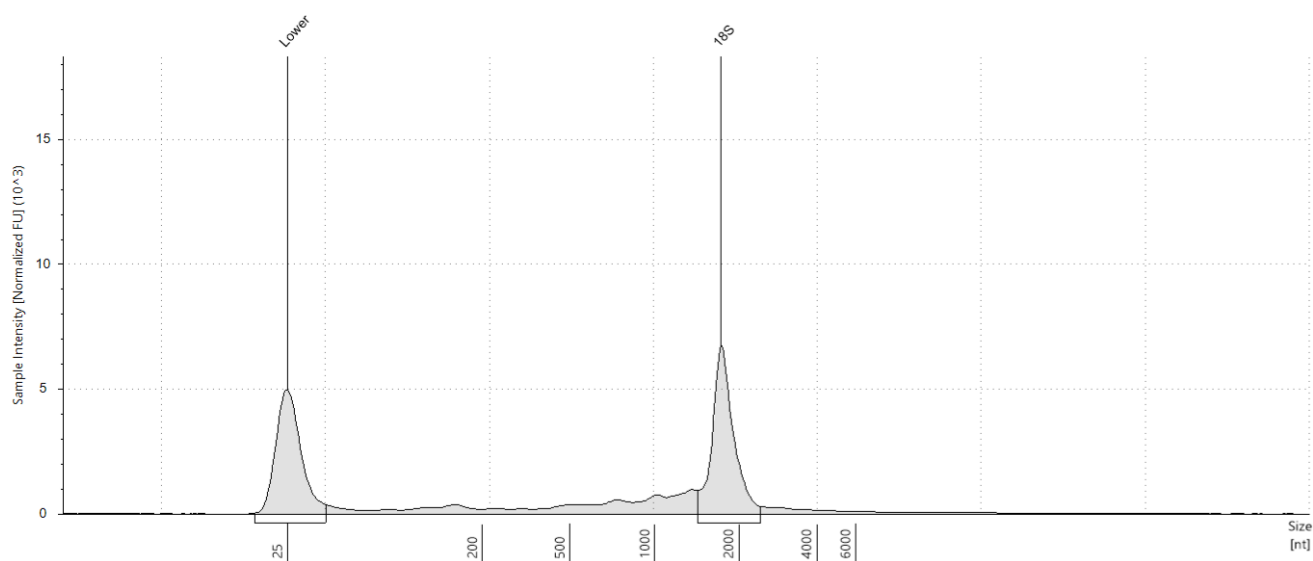
Size [nt]	Calibrated Conc. [ng/μl]	Assigned Conc. [ng/μl]	Peak Molarity [nmol/l]	% Integrated Area	Peak Comment	Observations
25	40.0	40.0	4710	-		Lower Marker
1780	48.2	-	79.6	100.00		18S

**D1: 451****Sample Table**

Well	RINe	28S/18S (Area)	Conc. [ng/μl]	Sample Description	Alert	Observations
D1	8.9	-	51.4	451	⚠	Caution! Expired ScreenTape device; The upper ribosomal fragment has degraded

**Peak Table**

Size [nt]	Calibrated Conc. [ng/μl]	Assigned Conc. [ng/μl]	Peak Molarity [nmol/l]	% Integrated Area	Peak Comment	Observations
25	40.0	40.0	4710	-		Lower Marker
1788	26.2	-	43.1	100.00		18S

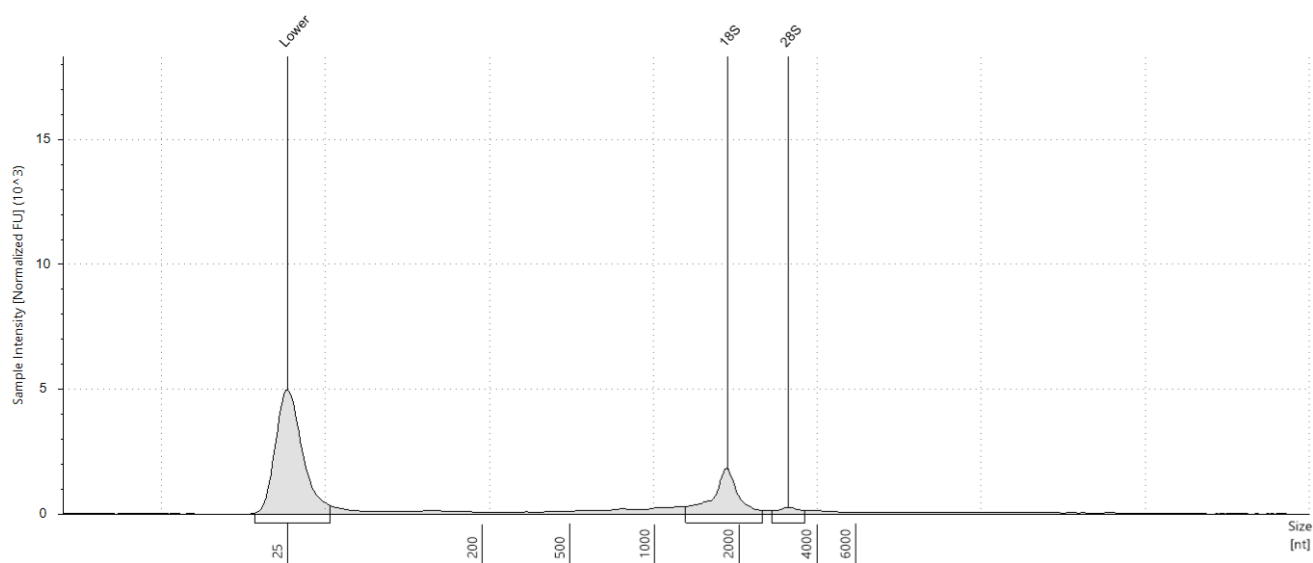
**E1: 367****Sample Table**

Well	RINe	28S/18S (Area)	Conc. [ng/μl]	Sample Description	Alert	Observations
E1	9.1	-	42.7	367	⚠	Caution! Expired ScreenTape device; The upper ribosomal fragment has degraded

**Peak Table**

Size [nt]	Calibrated Conc. [ng/μl]	Assigned Conc. [ng/μl]	Peak Molarity [nmol/l]	% Integrated Area	Peak Comment	Observations
25	40.0	40.0	4710	-		Lower Marker
1733	22.2	-	37.7	100.00		18S

## F1: 379



## Sample Table

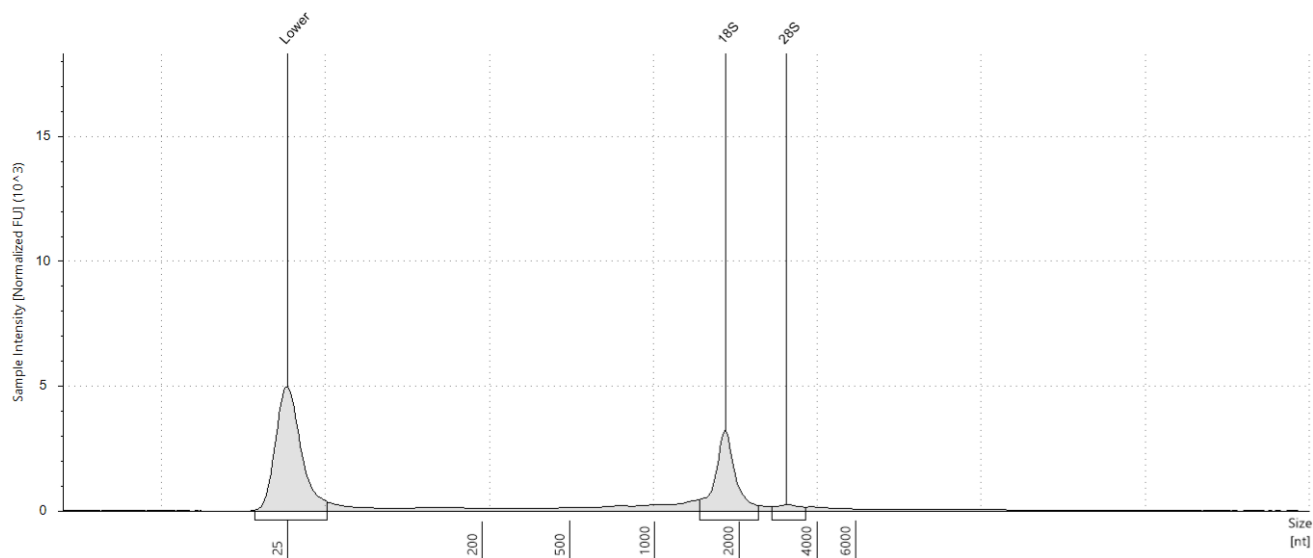
Well	RINe	28S/18S (Area)	Conc. [ng/μl]	Sample Description	Alert	Observations
F1	8.4	0.1	15.4	379	⚠	Caution! Expired ScreenTape device; Sample concentration outside functional range for RINe and the assay; The upper ribosomal fragment has degraded

## Peak Table

Size [nt]	Calibrated Conc. [ng/μl]	Assigned Conc. [ng/μl]	Peak Molarity [nmol/l]	% Integrated Area	Peak Comment	Observations
25	40.0	40.0	4710	-		Lower Marker
1820	6.54	-	10.6	89.19		18S
3106	0.793	-	0.751	10.81		28S



## G1: 402



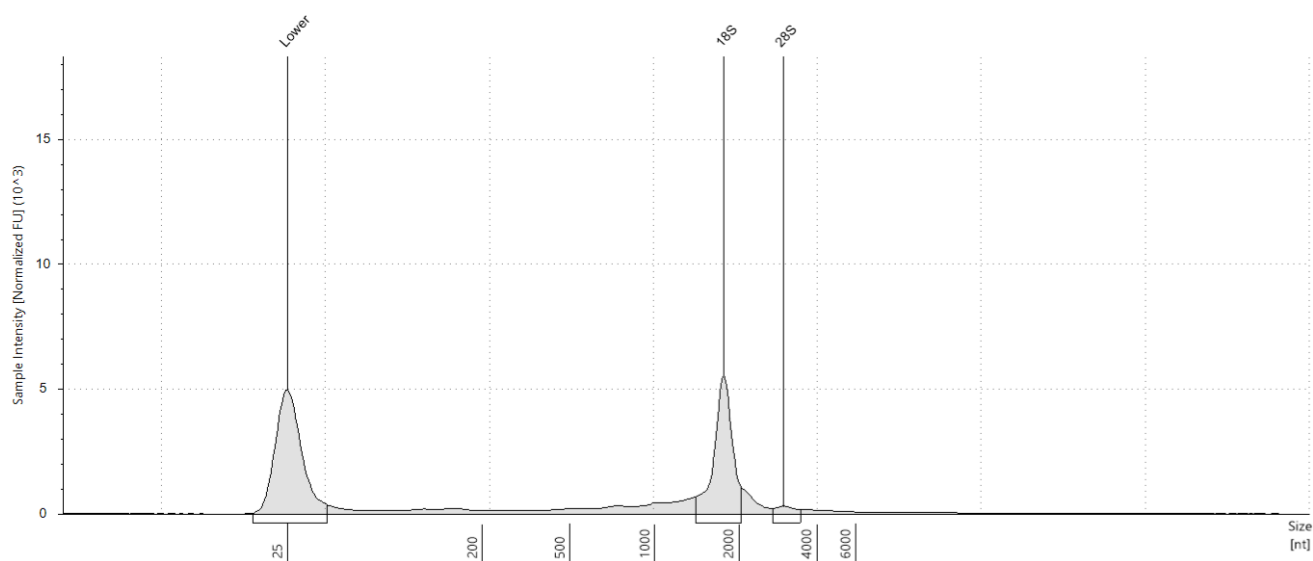
## Sample Table

Well	RINe	28S/18S (Area)	Conc. [ng/μl]	Sample Description	Alert	Observations
G1	9.3	0.1	20.9	402	⚠	Caution! Expired ScreenTape device; Sample concentration outside functional range for RINe and the assay; The upper ribosomal fragment has degraded

## Peak Table

Size [nt]	Calibrated Conc. [ng/μl]	Assigned Conc. [ng/μl]	Peak Molarity [nmol/l]	% Integrated Area	Peak Comment	Observations
25	40.0	40.0	4710	-		Lower Marker
1793	9.75	-	16.0	91.45		18S
3065	0.911	-	0.874	8.55		28S

H1: 458



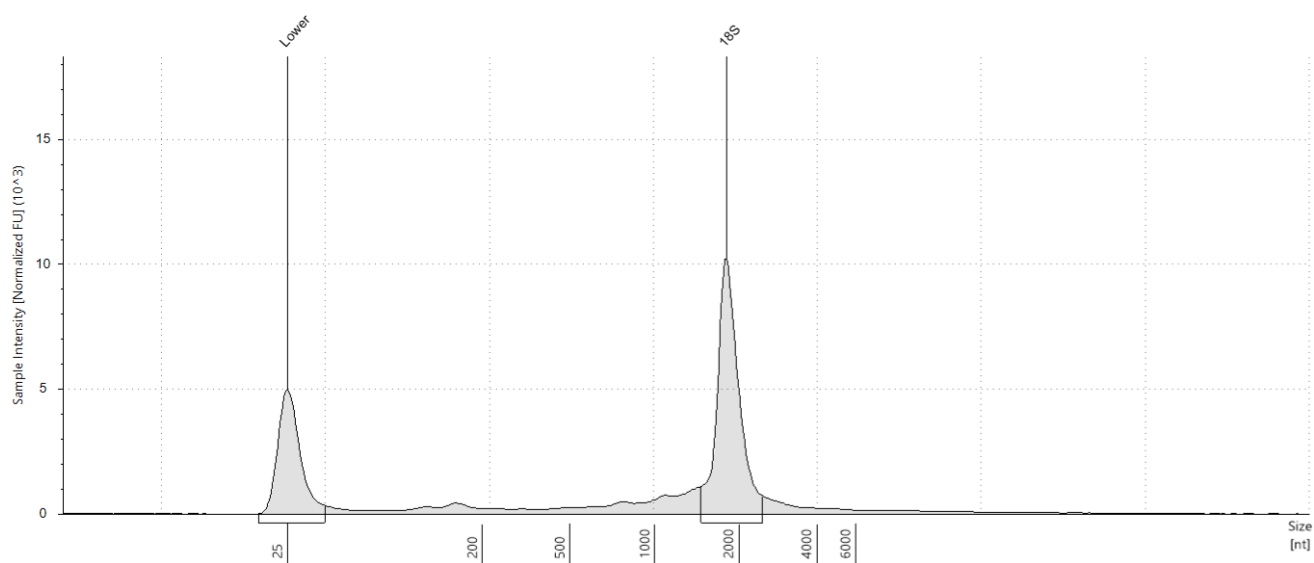
Sample Table

Well	RINe	28S/18S (Area)	Conc. [ng/μl]	Sample Description	Alert	Observations
H1	9.4	0.1	30.7	458	⚠	Caution! Expired ScreenTape device; The upper ribosomal fragment has degraded

Peak Table

Size [nt]	Calibrated Conc. [ng/μl]	Assigned Conc. [ng/μl]	Peak Molarity [nmol/l]	% Integrated Area	Peak Comment	Observations
25	40.0	40.0	4710	-		Lower Marker
1764	14.9	-	24.8	94.19		18S
2965	0.918	-	0.910	5.81		28S

## A2: 445

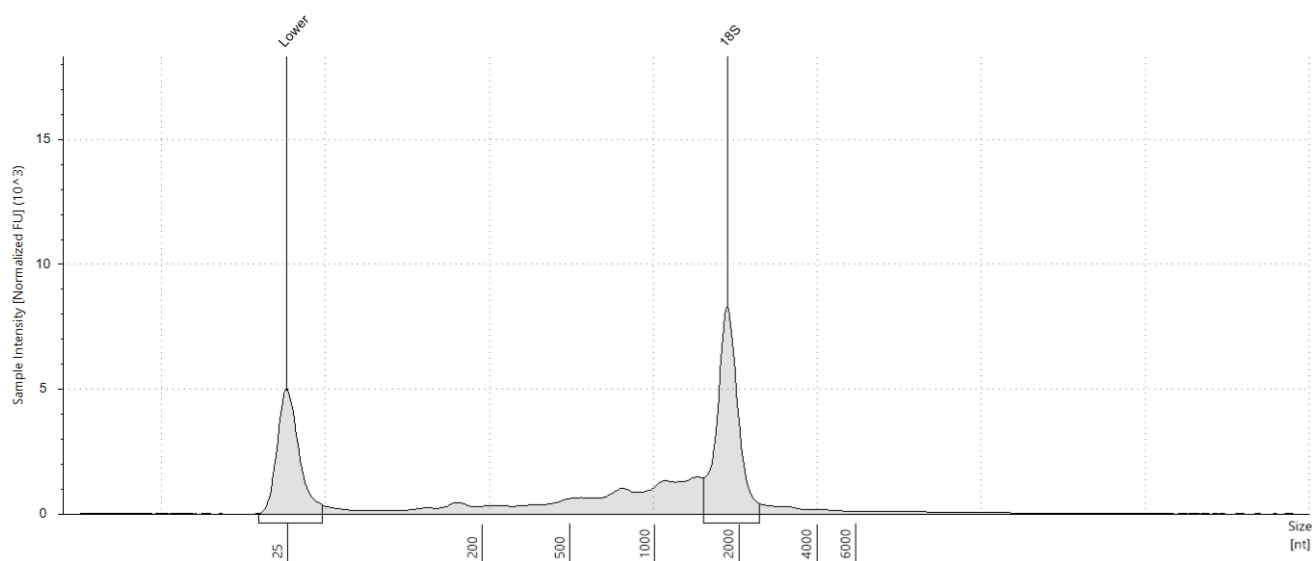


## Sample Table

Well	RINe	28S/18S (Area)	Conc. [ng/μl]	Sample Description	Alert	Observations
A2	9.7	-	64.3	445		Caution! Expired ScreenTape device; The upper ribosomal fragment has degraded

## Peak Table

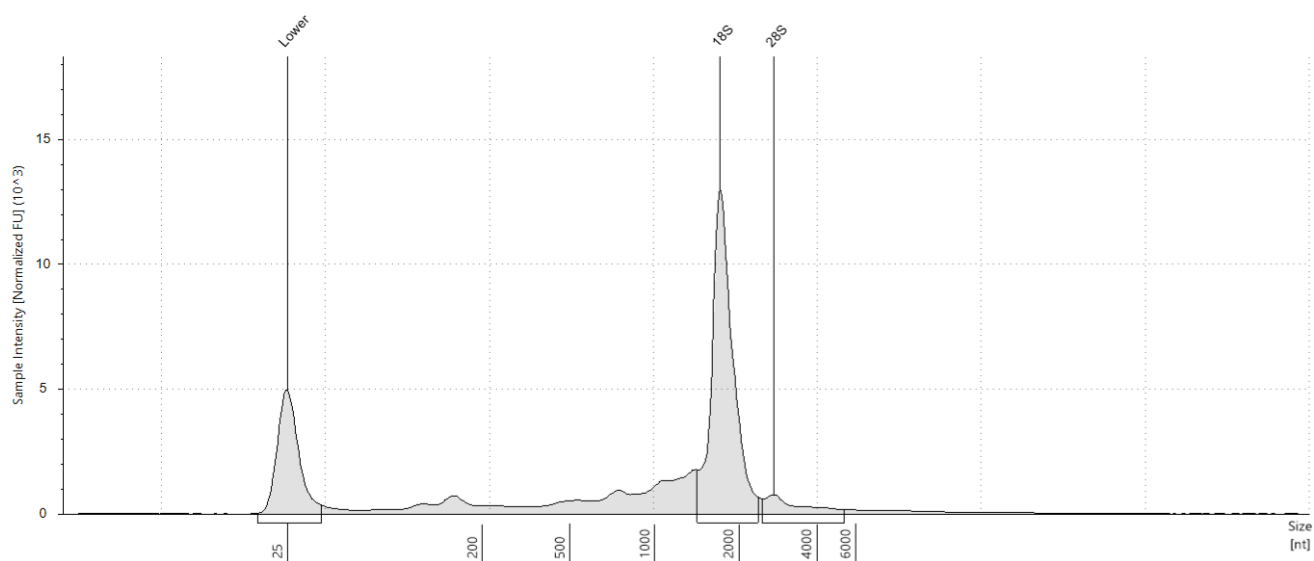
Size [nt]	Calibrated Conc. [ng/μl]	Assigned Conc. [ng/μl]	Peak Molarity [nmol/l]	% Integrated Area	Peak Comment	Observations
25	40.0	40.0	4710	-		Lower Marker
1810	38.7	-	62.8	100.00		18S

**B2: 322****Sample Table**

Well	RINe	28S/18S (Area)	Conc. [ng/μl]	Sample Description	Alert	Observations
B2	8.4	-	66.9	322	⚠	Caution! Expired ScreenTape device; The upper ribosomal fragment has degraded

**Peak Table**

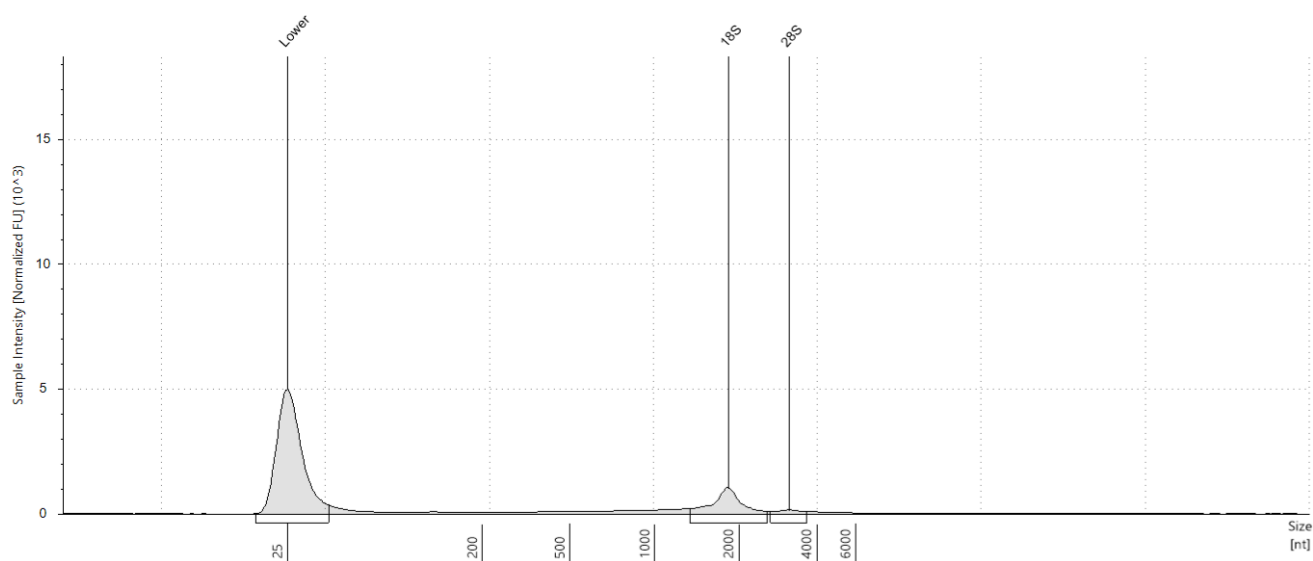
Size [nt]	Calibrated Conc. [ng/μl]	Assigned Conc. [ng/μl]	Peak Molarity [nmol/l]	% Integrated Area	Peak Comment	Observations
25	40.0	40.0	4710	-		Lower Marker
1832	30.9	-	49.7	100.00		18S

**C2: 397****Sample Table**

Well	RINe	28S/18S (Area)	Conc. [ng/μl]	Sample Description	Alert	Observations
C2	9.3	0.1	89.1	397	⚠	Caution! Expired ScreenTape device; The upper ribosomal fragment has degraded

**Peak Table**

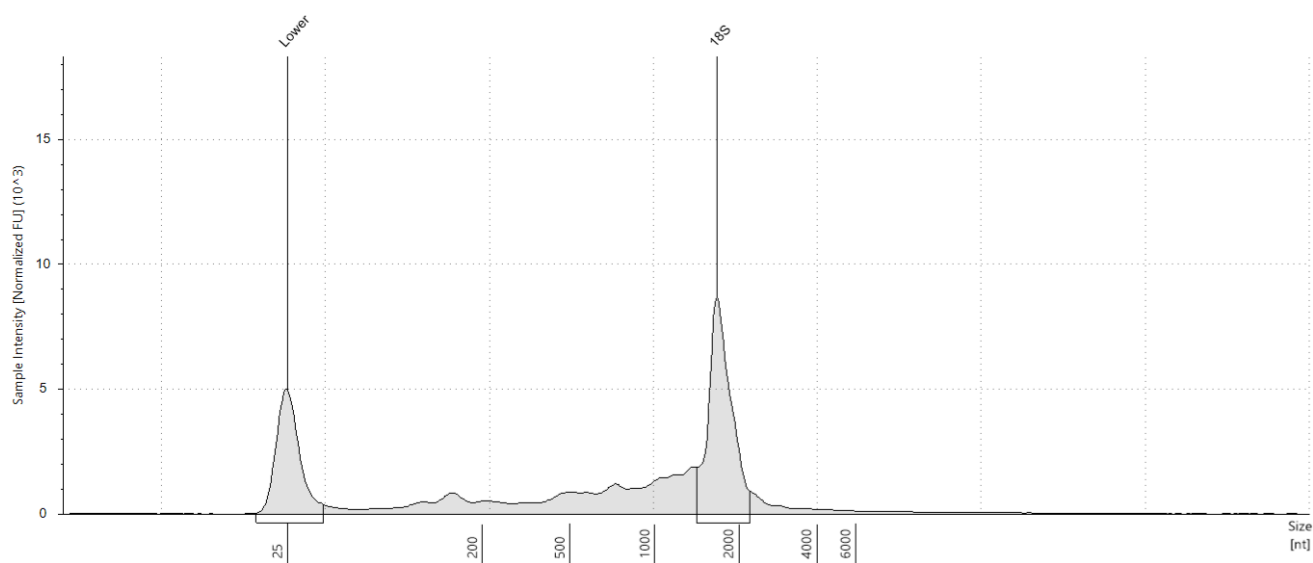
Size [nt]	Calibrated Conc. [ng/μl]	Assigned Conc. [ng/μl]	Peak Molarity [nmol/l]	% Integrated Area	Peak Comment	Observations
25	40.0	40.0	4710	-		Lower Marker
1720	49.6	-	84.8	91.15		18S
2748	4.81	-	5.15	8.85		28S

**D2: 825****Sample Table**

Well	RINe	28S/18S (Area)	Conc. [ng/μl]	Sample Description	Alert	Observations
D2	8.1	0.1	10.9	825	⚠	Caution! Expired ScreenTape device; Sample concentration outside functional range for RINe and the assay; The upper ribosomal fragment has degraded

**Peak Table**

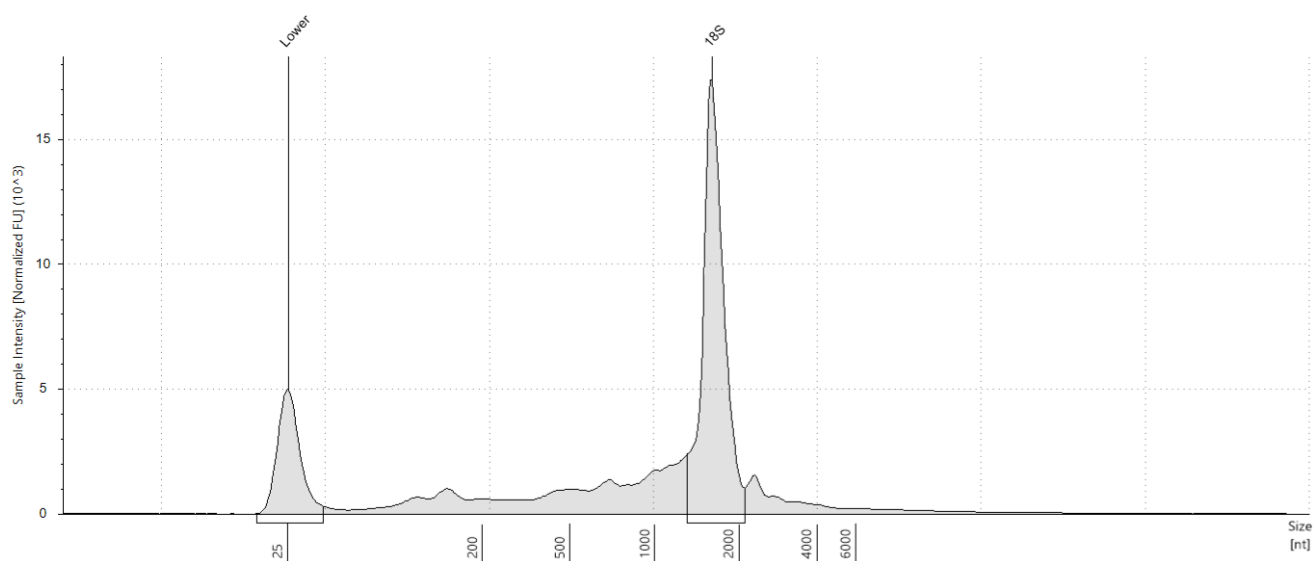
Size [nt]	Calibrated Conc. [ng/μl]	Assigned Conc. [ng/μl]	Peak Molarity [nmol/l]	% Integrated Area	Peak Comment	Observations
25	40.0	40.0	4710	-		Lower Marker
1833	4.36	-	7.00	88.08		18S
3126	0.590	-	0.555	11.92		28S

**E2: 829****Sample Table**

Well	RINe	28S/18S (Area)	Conc. [ng/μl]	Sample Description	Alert	Observations
E2	8.3	-	76.2	829	⚠	Caution! Expired ScreenTape device; The upper ribosomal fragment has degraded

**Peak Table**

Size [nt]	Calibrated Conc. [ng/μl]	Assigned Conc. [ng/μl]	Peak Molarity [nmol/l]	% Integrated Area	Peak Comment	Observations
25	40.0	40.0	4710	-		Lower Marker
1677	32.9	-	57.8	100.00		18S

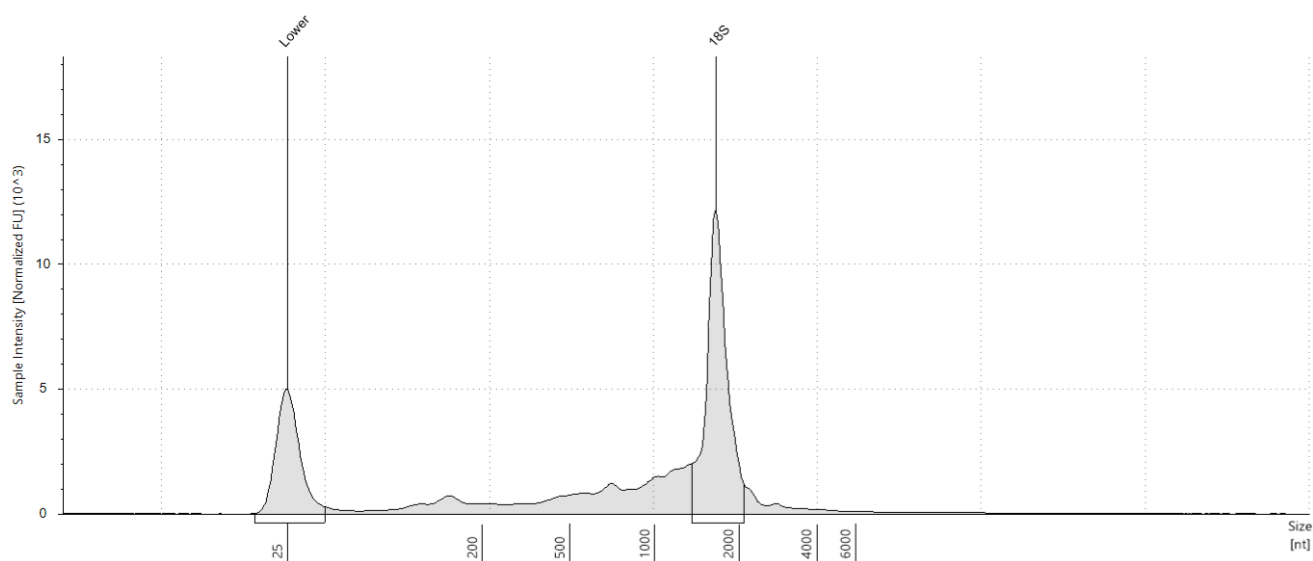
**F2: 717****Sample Table**

Well	RINe	28S/18S (Area)	Conc. [ng/μl]	Sample Description	Alert	Observations
F2	9.3	-	119	717		Caution! Expired ScreenTape device; The upper ribosomal fragment has degraded

**Peak Table**

Size [nt]	Calibrated Conc. [ng/μl]	Assigned Conc. [ng/μl]	Peak Molarity [nmol/l]	% Integrated Area	Peak Comment	Observations
25	40.0	40.0	4710	-		Lower Marker
1602	62.7	-	115	100.00		18S

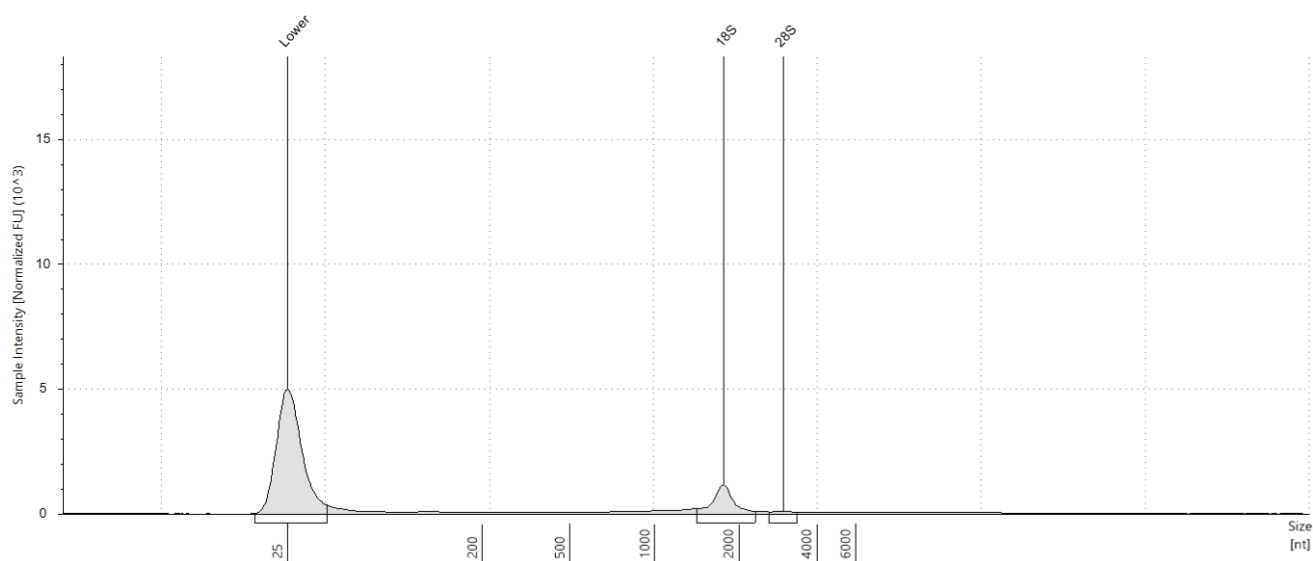


**G2: 801****Sample Table**

Well	RINe	28S/18S (Area)	Conc. [ng/μl]	Sample Description	Alert	Observations
G2	8.8	-	80.4	801	⚠	Caution! Expired ScreenTape device; The upper ribosomal fragment has degraded

**Peak Table**

Size [nt]	Calibrated Conc. [ng/μl]	Assigned Conc. [ng/μl]	Peak Molarity [nmol/l]	% Integrated Area	Peak Comment	Observations
25	40.0	40.0	4710	-		Lower Marker
1666	40.5	-	71.5	100.00		18S

**H2: 783****Sample Table**

Well	RINe	28S/18S (Area)	Conc. [ng/μl]	Sample Description	Alert	Observations
H2	8.9	0.1	10.0	783		Caution! Expired ScreenTape device; Sample concentration outside functional range for RINe and the assay; The upper ribosomal fragment has degraded

**Peak Table**

Size [nt]	Calibrated Conc. [ng/μl]	Assigned Conc. [ng/μl]	Peak Molarity [nmol/l]	% Integrated Area	Peak Comment	Observations
25	40.0	40.0	4710	-		Lower Marker
1764	3.65	-	6.09	91.48		18S
2968	0.340	-	0.337	8.52		28S