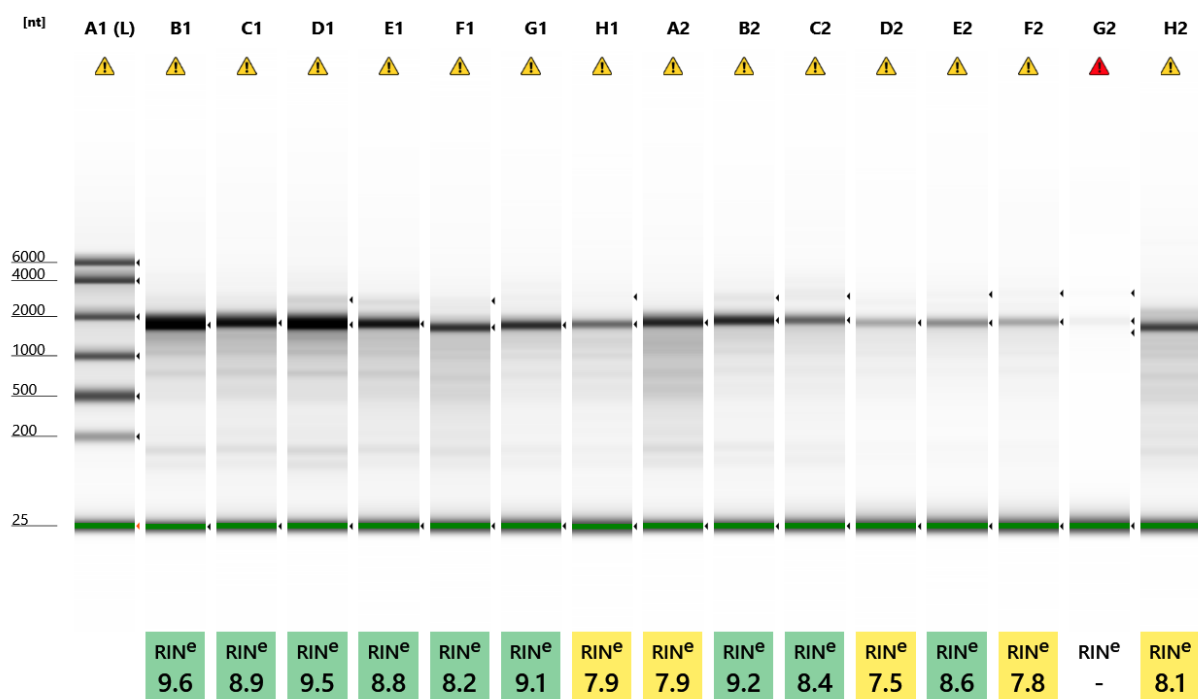








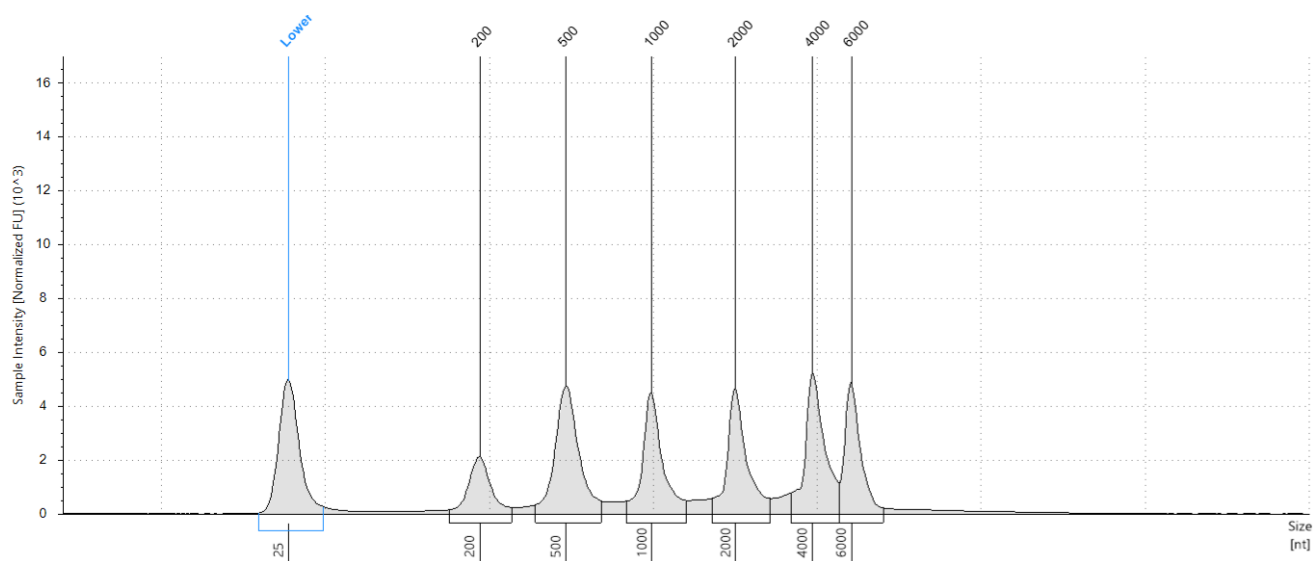
Filename: 2020-08-27 - 16.55.16.RNA



Sample Info

Well	RIN ^e	28S/18S (Area)	Conc. [ng/μl]	Sample Description	Alert	Observations
A1	-	-	118	Ladder	⚠	Caution! Expired ScreenTape device; Ladder
B1	9.6	-	108	430	⚠	Caution! Expired ScreenTape device; The upper ribosomal fragment has degraded
C1	8.9	-	80.0	346	⚠	Caution! Expired ScreenTape device; The upper ribosomal fragment has degraded
D1	9.5	0.1	112	350	⚠	Caution! Expired ScreenTape device; The upper ribosomal fragment has degraded
E1	8.8	-	67.6	389	⚠	Caution! Expired ScreenTape device; The upper ribosomal fragment has degraded
F1	8.2	0.1	57.5	833	⚠	Caution! Expired ScreenTape device; The upper ribosomal fragment has degraded
G1	9.1	-	43.2	1464	⚠	Caution! Expired ScreenTape device; The upper ribosomal fragment has degraded
H1	7.9	0.1	31.6	1578	⚠	Caution! Expired ScreenTape device; The upper ribosomal fragment has degraded
A2	7.9	-	79.2	1537	⚠	Caution! Expired ScreenTape device; The upper ribosomal fragment has degraded
B2	9.2	0.1	49.8	1647	⚠	Caution! Expired ScreenTape device; The upper ribosomal fragment has degraded

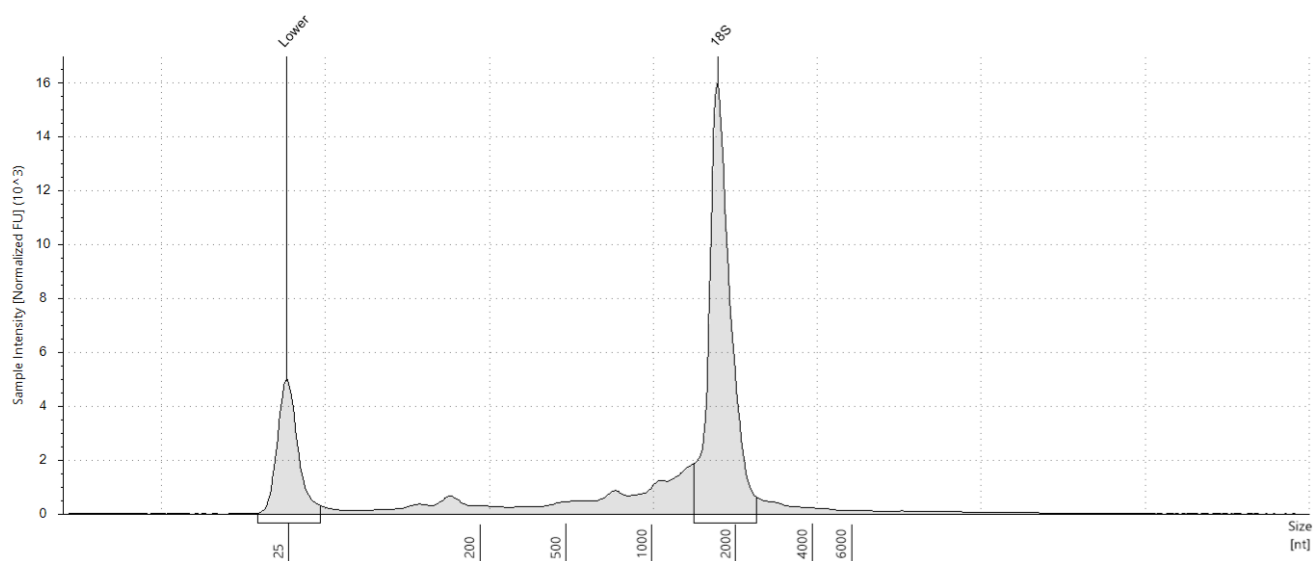
C2	8.4	0.1	36.2	1521		Caution! Expired ScreenTape device; The upper ribosomal fragment has degraded
D2	7.5	-	17.8	1489		Caution! Expired ScreenTape device; Sample concentration outside functional range for RINe and the assay; The upper ribosomal fragment has degraded
E2	8.6	0.1	20.2	1582		Caution! Expired ScreenTape device; Sample concentration outside functional range for RINe and the assay; The upper ribosomal fragment has degraded
F2	7.8	0.1	19.5	1459		Caution! Expired ScreenTape device; Sample concentration outside functional range for RINe and the assay; The upper ribosomal fragment has degraded
G2	-	-	3.53	1576		Caution! Expired ScreenTape device; Sample concentration outside functional range for RINe and the assay
H2	8.1	-	53.7	1567		Caution! Expired ScreenTape device; The upper ribosomal fragment has degraded

A1: Ladder**Sample Table**

Well	RINe	28S/18S (Area)	Conc. [ng/μl]	Sample Description	Alert	Observations
A1	-	-	118	Ladder	⚠	Caution! Expired ScreenTape device; Ladder

Peak Table

Size [nt]	Calibrated Conc. [ng/μl]	Assigned Conc. [ng/μl]	Peak Molarity [nmol/l]	% Integrated Area	Peak Comment	Observations
25	40.0	40.0	4710	-		Lower Marker
200	9.66	-	142	9.19		
500	22.9	-	134	21.76		
1000	18.0	-	52.8	17.09		
2000	18.3	-	26.9	17.41		
4000	20.5	-	15.1	19.51		
6000	15.8	-	7.74	15.04		

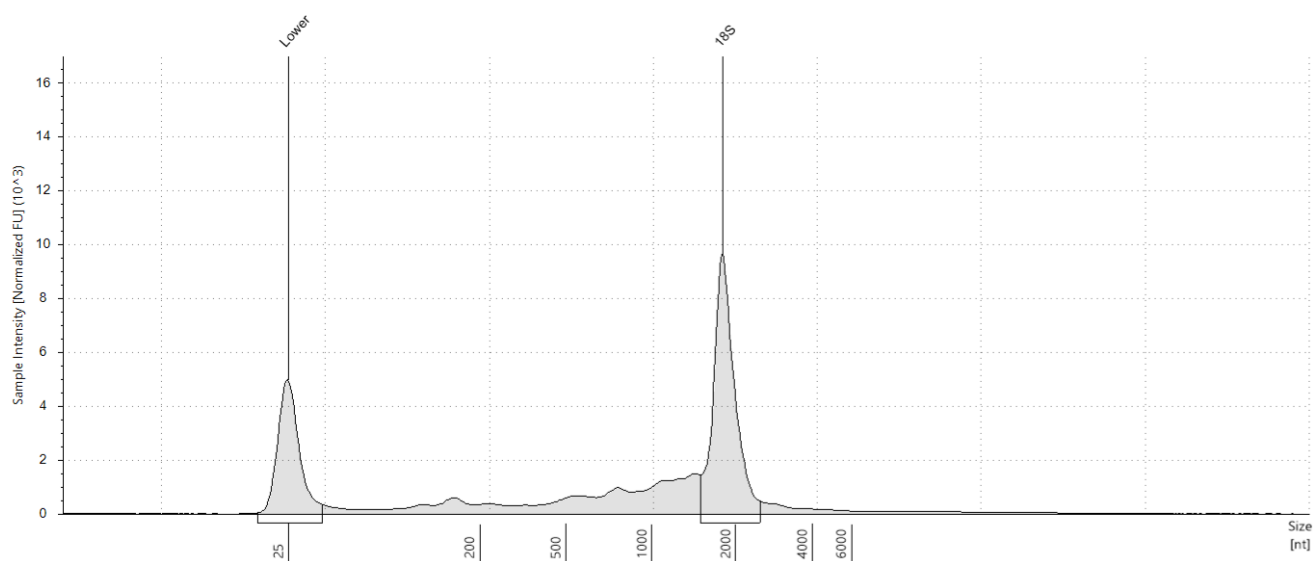
B1: 430**Sample Table**

Well	RINe	28S/18S (Area)	Conc. [ng/μl]	Sample Description	Alert	Observations
B1	9.6	-	108	430	⚠	Caution! Expired ScreenTape device; The upper ribosomal fragment has degraded

Peak Table

Size [nt]	Calibrated Conc. [ng/μl]	Assigned Conc. [ng/μl]	Peak Molarity [nmol/l]	% Integrated Area	Peak Comment	Observations
25	40.0	40.0	4710	-		Lower Marker
1746	68.5	-	115	100.00		18S

C1: 346

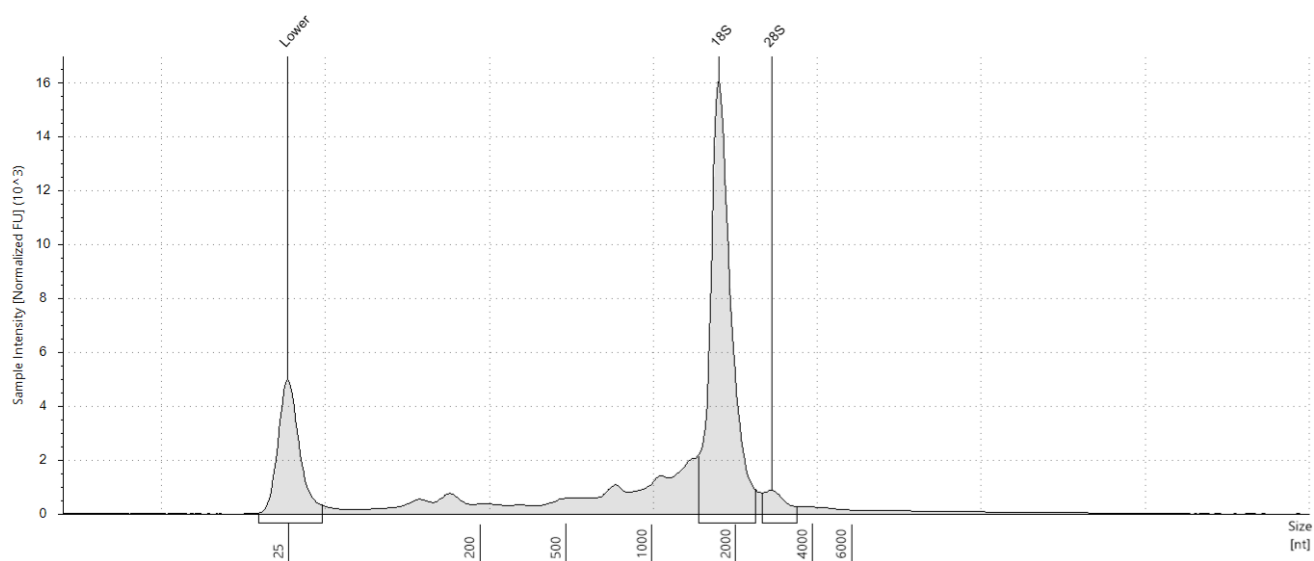


Sample Table

Well	RINe	28S/18S (Area)	Conc. [ng/μl]	Sample Description	Alert	Observations
C1	8.9	-	80.0	346	⚠	Caution! Expired ScreenTape device; The upper ribosomal fragment has degraded

Peak Table

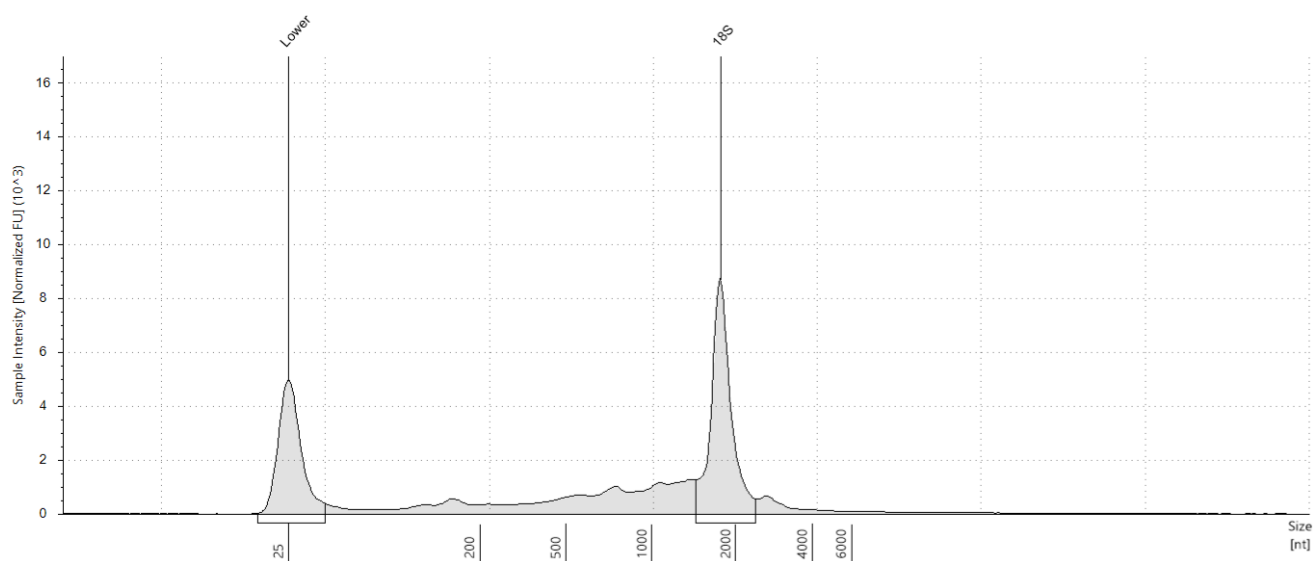
Size [nt]	Calibrated Conc. [ng/μl]	Assigned Conc. [ng/μl]	Peak Molarity [nmol/l]	% Integrated Area	Peak Comment	Observations
25	40.0	40.0	4710	-		Lower Marker
1795	39.6	-	65.0	100.00		18S

D1: 350**Sample Table**

Well	RINe	28S/18S (Area)	Conc. [ng/μl]	Sample Description	Alert	Observations
D1	9.5	0.1	112	350		Caution! Expired ScreenTape device; The upper ribosomal fragment has degraded

Peak Table

Size [nt]	Calibrated Conc. [ng/μl]	Assigned Conc. [ng/μl]	Peak Molarity [nmol/l]	% Integrated Area	Peak Comment	Observations
25	40.0	40.0	4710	-		Lower Marker
1741	64.8	-	109	94.63		18S
2779	3.67	-	3.89	5.37		28S

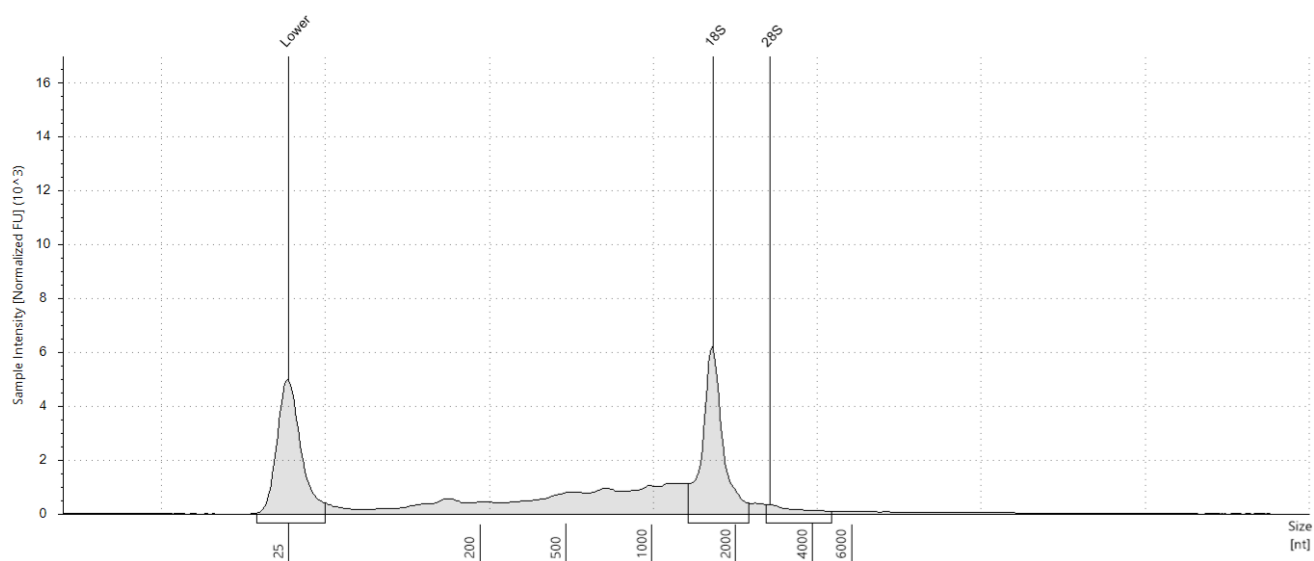
E1: 389**Sample Table**

Well	RINe	28S/18S (Area)	Conc. [ng/μl]	Sample Description	Alert	Observations
E1	8.8	-	67.6	389	⚠	Caution! Expired ScreenTape device; The upper ribosomal fragment has degraded

Peak Table

Size [nt]	Calibrated Conc. [ng/μl]	Assigned Conc. [ng/μl]	Peak Molarity [nmol/l]	% Integrated Area	Peak Comment	Observations
25	40.0	40.0	4710	-		Lower Marker
1762	31.6	-	52.7	100.00		18S

F1: 833



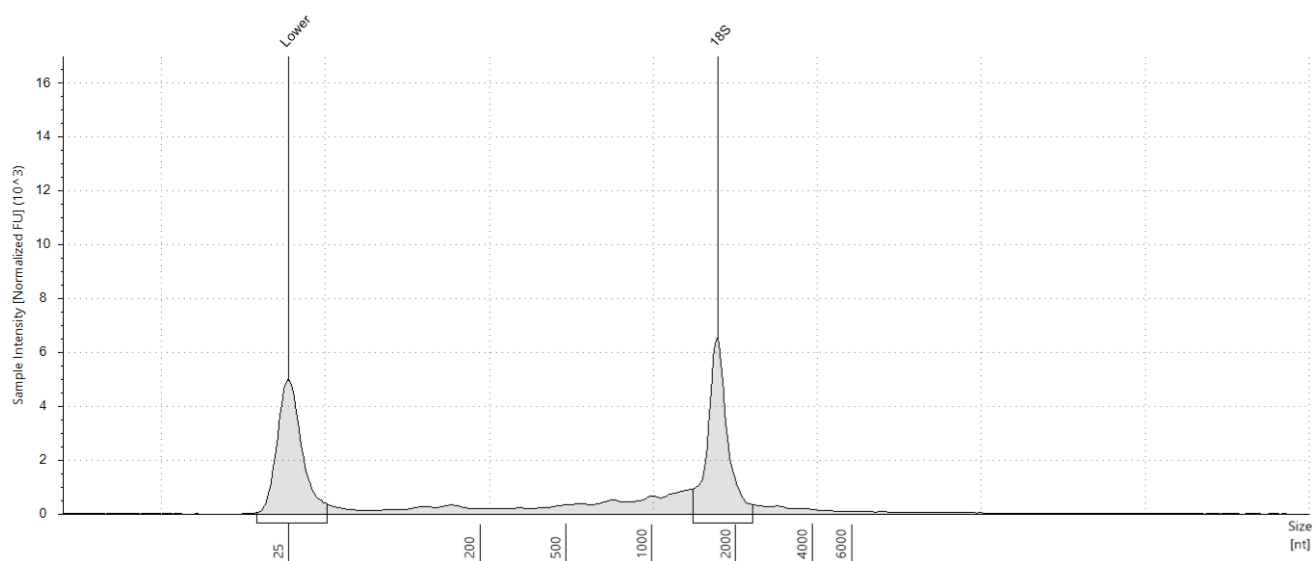
Sample Table

Well	RINe	28S/18S (Area)	Conc. [ng/μl]	Sample Description	Alert	Observations
F1	8.2	0.1	57.5	833	⚠	Caution! Expired ScreenTape device; The upper ribosomal fragment has degraded

Peak Table

Size [nt]	Calibrated Conc. [ng/μl]	Assigned Conc. [ng/μl]	Peak Molarity [nmol/l]	% Integrated Area	Peak Comment	Observations
25	40.0	40.0	4710	-		Lower Marker
1654	21.8	-	38.7	92.39		18S
2717	1.79	-	1.94	7.61		28S

G1: 1464

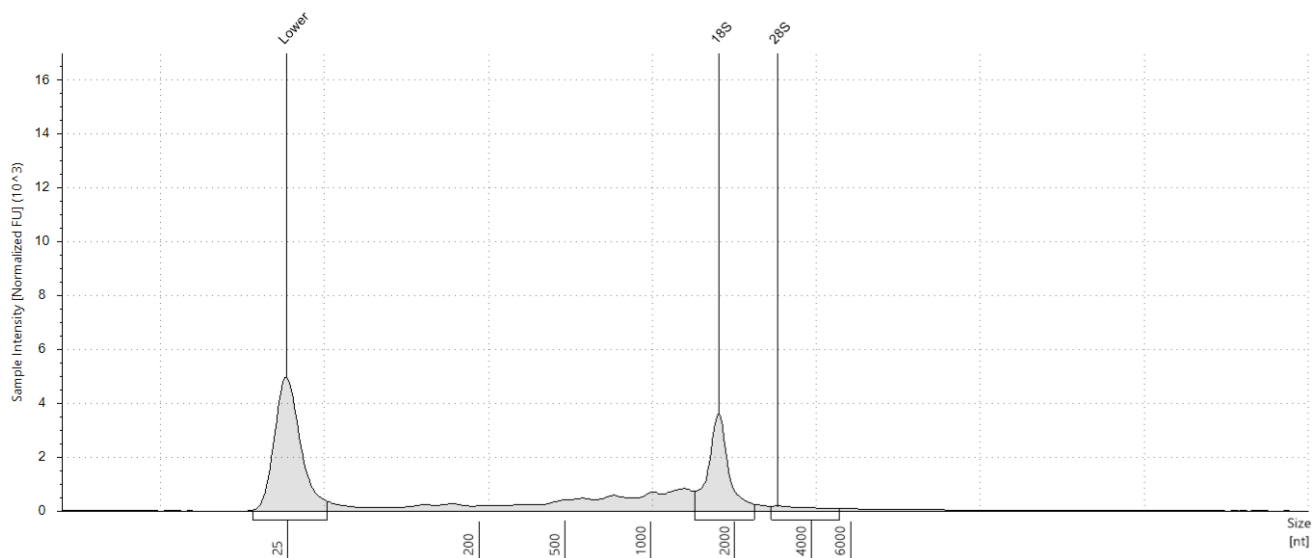


Sample Table

Well	RINe	28S/18S (Area)	Conc. [ng/μl]	Sample Description	Alert	Observations
G1	9.1	-	43.2	1464	⚠	Caution! Expired ScreenTape device; The upper ribosomal fragment has degraded

Peak Table

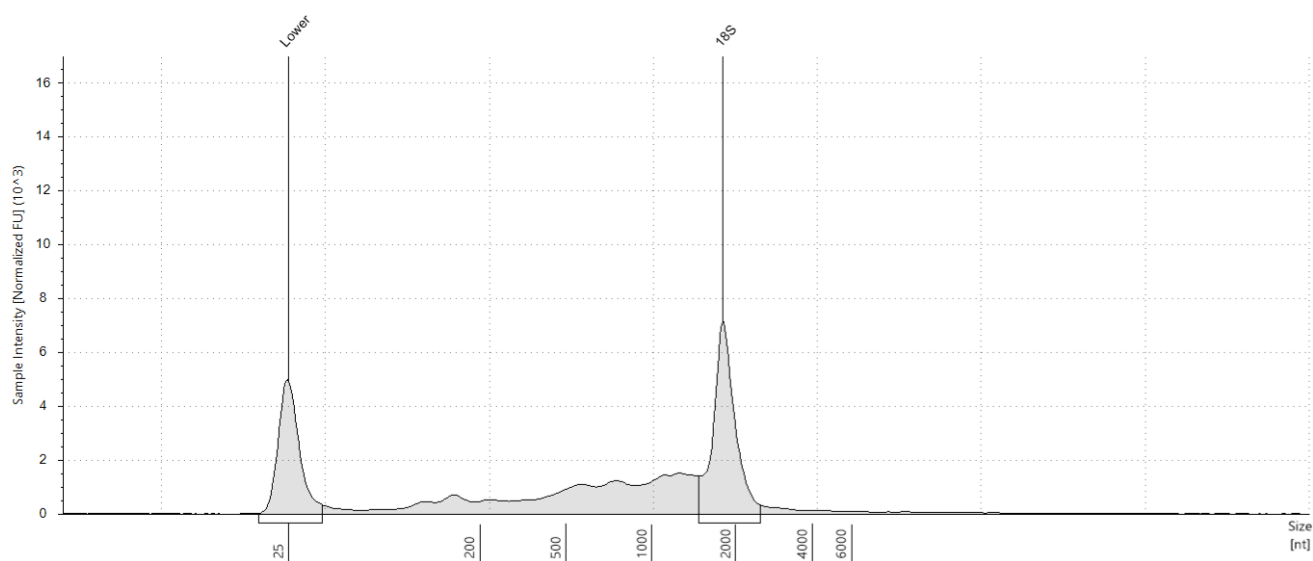
Size [nt]	Calibrated Conc. [ng/μl]	Assigned Conc. [ng/μl]	Peak Molarity [nmol/l]	% Integrated Area	Peak Comment	Observations
25	40.0	40.0	4710	-		Lower Marker
1725	21.3	-	36.4	100.00		18S

H1: 1578**Sample Table**

Well	RINe	28S/18S (Area)	Conc. [ng/μl]	Sample Description	Alert	Observations
H1	7.9	0.1	31.6	1578	⚠	Caution! Expired ScreenTape device; The upper ribosomal fragment has degraded

Peak Table

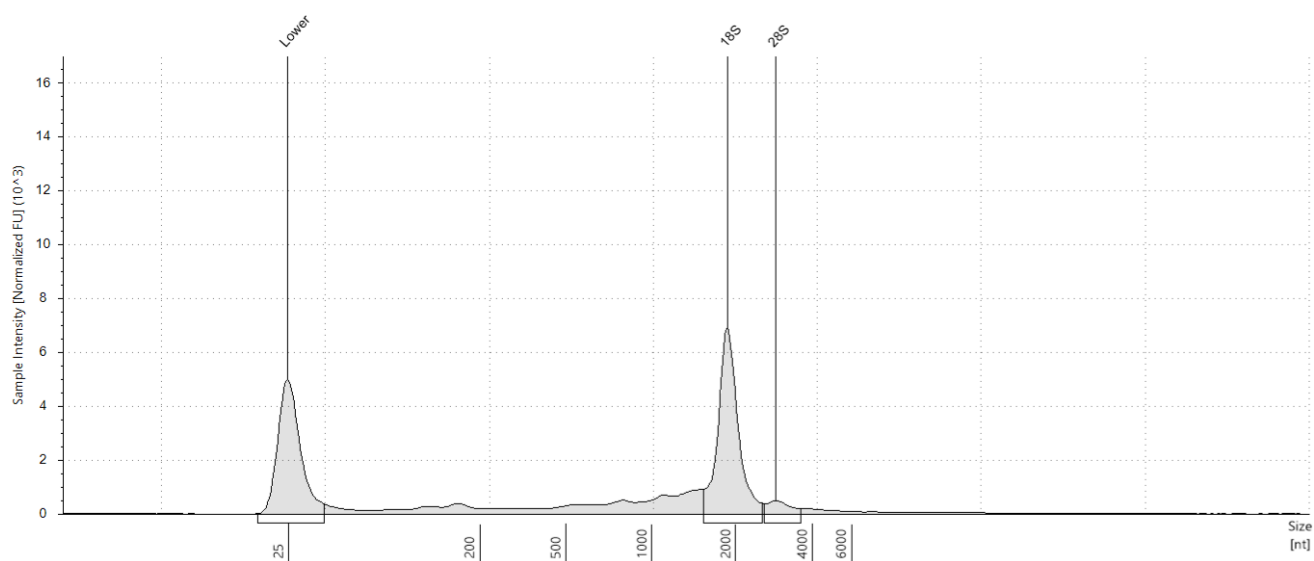
Size [nt]	Calibrated Conc. [ng/μl]	Assigned Conc. [ng/μl]	Peak Molarity [nmol/l]	% Integrated Area	Peak Comment	Observations
25	40.0	40.0	4710	-		Lower Marker
1760	11.7	-	19.6	90.53		18S
2953	1.23	-	1.22	9.47		28S

A2: 1537**Sample Table**

Well	RINe	28S/18S (Area)	Conc. [ng/μl]	Sample Description	Alert	Observations
A2	7.9	-	79.2	1537	⚠	Caution! Expired ScreenTape device; The upper ribosomal fragment has degraded

Peak Table

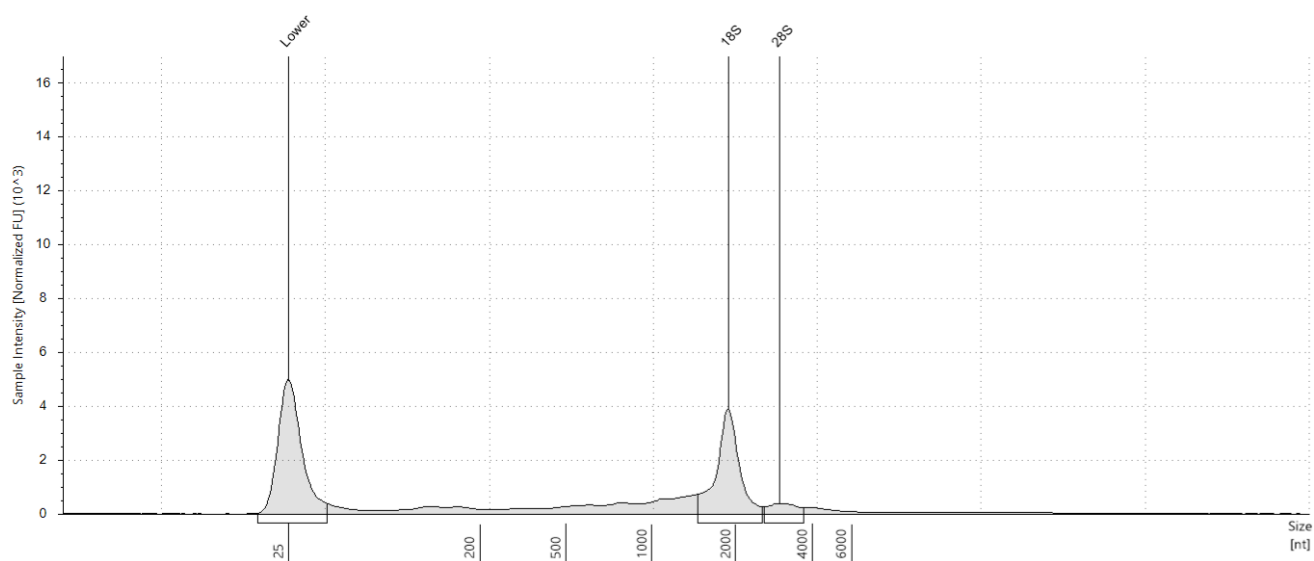
Size [nt]	Calibrated Conc. [ng/μl]	Assigned Conc. [ng/μl]	Peak Molarity [nmol/l]	% Integrated Area	Peak Comment	Observations
25	40.0	40.0	4710	-		Lower Marker
1808	30.7	-	49.9	100.00		18S

B2: 1647**Sample Table**

Well	RINe	28S/18S (Area)	Conc. [ng/μl]	Sample Description	Alert	Observations
B2	9.2	0.1	49.8	1647	⚠	Caution! Expired ScreenTape device; The upper ribosomal fragment has degraded

Peak Table

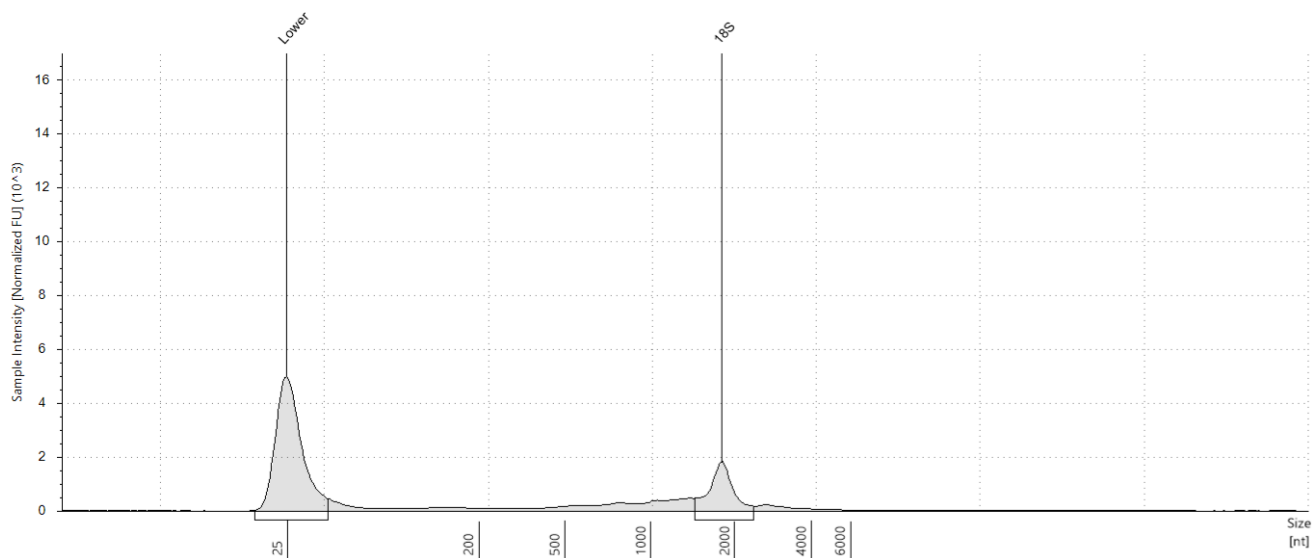
Size [nt]	Calibrated Conc. [ng/μl]	Assigned Conc. [ng/μl]	Peak Molarity [nmol/l]	% Integrated Area	Peak Comment	Observations
25	40.0	40.0	4710	-		Lower Marker
1883	25.5	-	39.9	92.43		18S
2895	2.09	-	2.12	7.57		28S

C2: 1521**Sample Table**

Well	RINe	28S/18S (Area)	Conc. [ng/μl]	Sample Description	Alert	Observations
C2	8.4	0.1	36.2	1521	⚠	Caution! Expired ScreenTape device; The upper ribosomal fragment has degraded

Peak Table

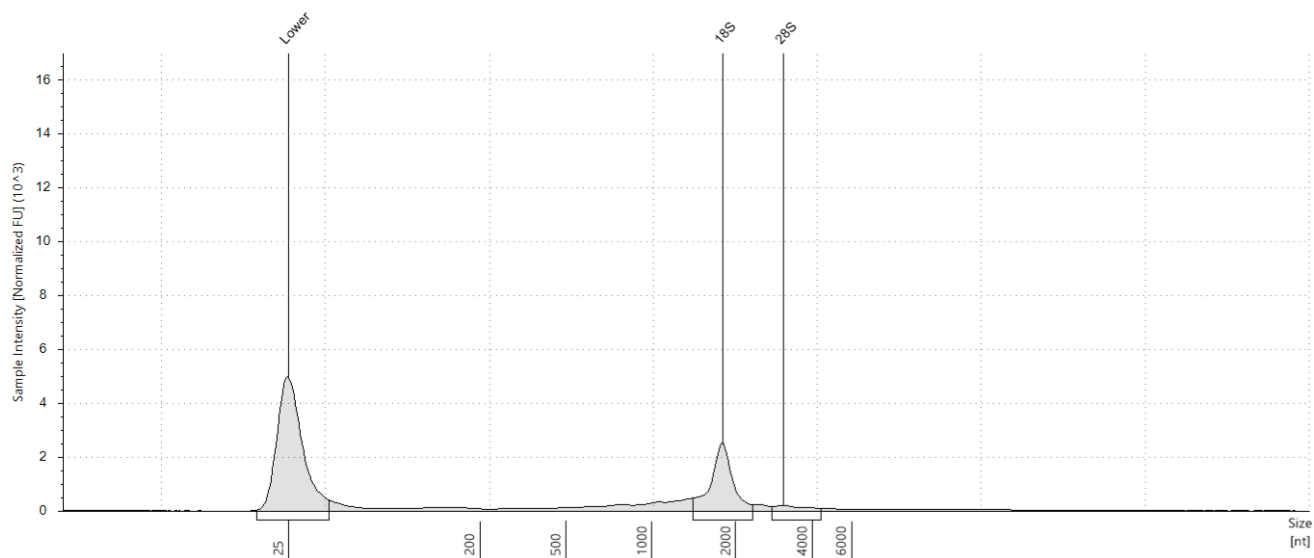
Size [nt]	Calibrated Conc. [ng/μl]	Assigned Conc. [ng/μl]	Peak Molarity [nmol/l]	% Integrated Area	Peak Comment	Observations
25	40.0	40.0	4710	-		Lower Marker
1885	15.4	-	24.0	88.73		18S
2979	1.95	-	1.93	11.27		28S

D2: 1489**Sample Table**

Well	RINe	28S/18S (Area)	Conc. [ng/μl]	Sample Description	Alert	Observations
D2	7.5	-	17.8	1489		Caution! Expired ScreenTape device; Sample concentration outside functional range for RINe and the assay; The upper ribosomal fragment has degraded

Peak Table

Size [nt]	Calibrated Conc. [ng/μl]	Assigned Conc. [ng/μl]	Peak Molarity [nmol/l]	% Integrated Area	Peak Comment	Observations
25	40.0	40.0	4710	-		Lower Marker
1803	6.61	-	10.8	100.00		18S

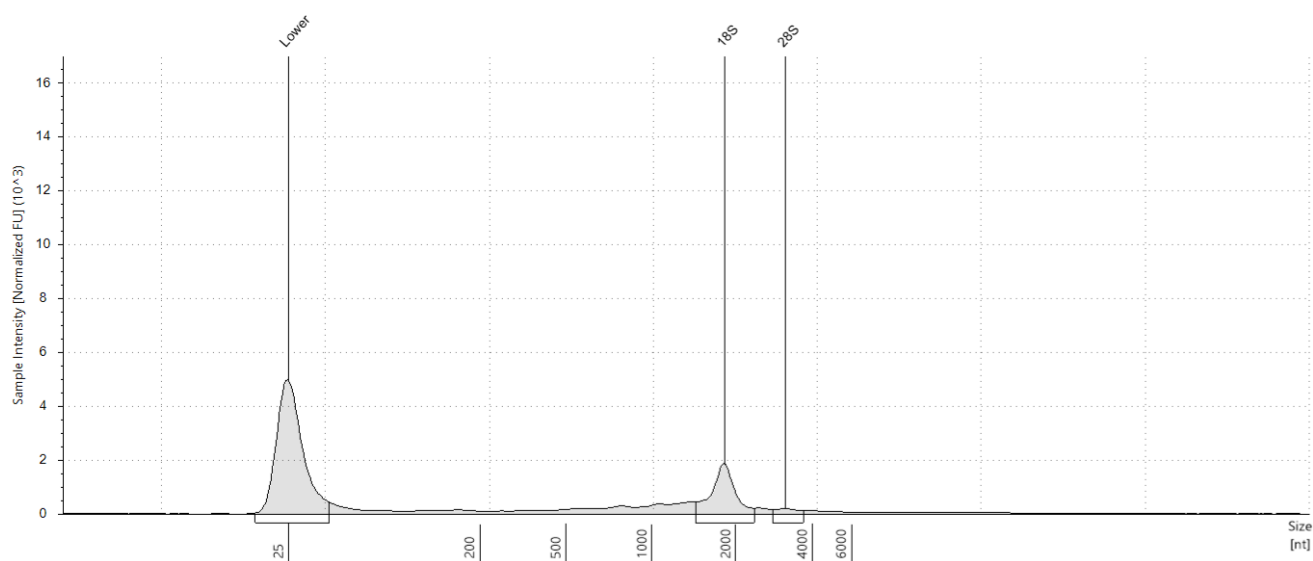
E2: 1582**Sample Table**

Well	RINe	28S/18S (Area)	Conc. [ng/μl]	Sample Description	Alert	Observations
E2	8.6	0.1	20.2	1582	⚠	Caution! Expired ScreenTape device; Sample concentration outside functional range for RINe and the assay; The upper ribosomal fragment has degraded

Peak Table

Size [nt]	Calibrated Conc. [ng/μl]	Assigned Conc. [ng/μl]	Peak Molarity [nmol/l]	% Integrated Area	Peak Comment	Observations
25	40.0	40.0	4710	-		Lower Marker
1795	8.83	-	14.5	89.51		18S
3079	1.04	-	0.989	10.49		28S

F2: 1459

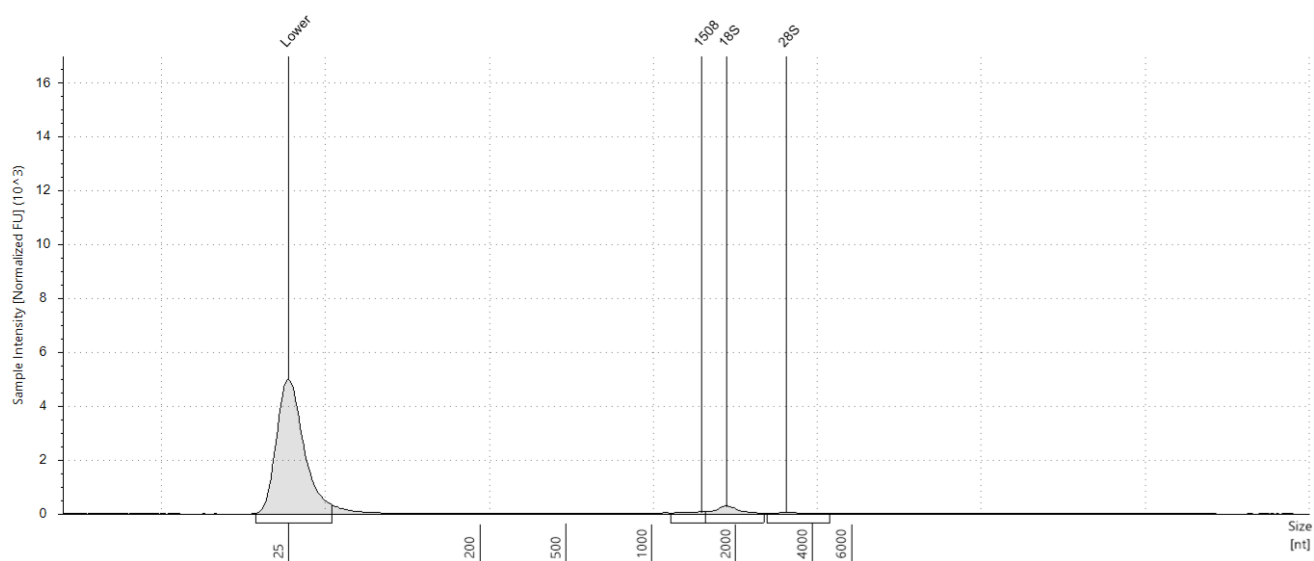


Sample Table

Well	RINe	28S/18S (Area)	Conc. [ng/μl]	Sample Description	Alert	Observations
F2	7.8	0.1	19.5	1459	⚠	Caution! Expired ScreenTape device; Sample concentration outside functional range for RINe and the assay; The upper ribosomal fragment has degraded

Peak Table

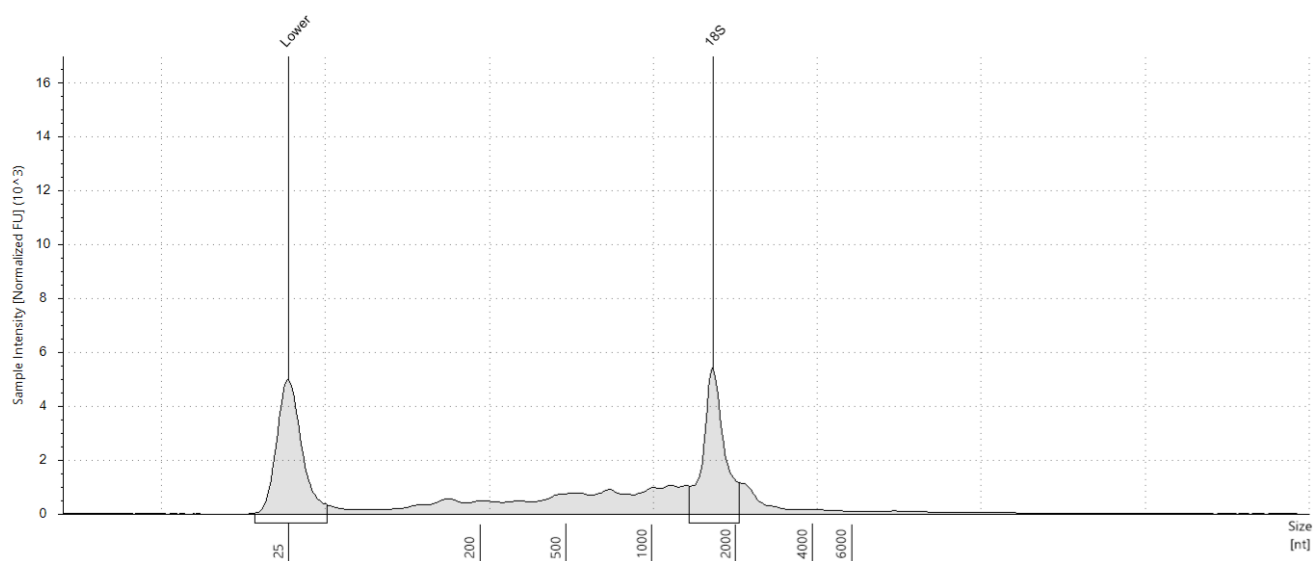
Size [nt]	Calibrated Conc. [ng/μl]	Assigned Conc. [ng/μl]	Peak Molarity [nmol/l]	% Integrated Area	Peak Comment	Observations
25	40.0	40.0	4710	-		Lower Marker
1830	6.76	-	10.9	90.63		18S
3145	0.700	-	0.654	9.37		28S

G2: 1576**Sample Table**

Well	RINe	28S/18S (Area)	Conc. [ng/μl]	Sample Description	Alert	Observations
G2	-	-	3.53	1576	▲	Caution! Expired ScreenTape device; Sample concentration outside functional range for RINe and the assay

Peak Table

Size [nt]	Calibrated Conc. [ng/μl]	Assigned Conc. [ng/μl]	Peak Molarity [nmol/l]	% Integrated Area	Peak Comment	Observations
25	40.0	40.0	4710	-		Lower Marker
1508	0.247	-	0.481	15.85		
1855	1.05	-	1.67	67.63		18S
3159	0.257	-	0.239	16.52		28S

H2: 1567**Sample Table**

Well	RINe	28S/18S (Area)	Conc. [ng/μl]	Sample Description	Alert	Observations
H2	8.1	-	53.7	1567	⚠	Caution! Expired ScreenTape device; The upper ribosomal fragment has degraded

Peak Table

Size [nt]	Calibrated Conc. [ng/μl]	Assigned Conc. [ng/μl]	Peak Molarity [nmol/l]	% Integrated Area	Peak Comment	Observations
25	40.0	40.0	4710	-		Lower Marker
1654	18.8	-	33.5	100.00		18S