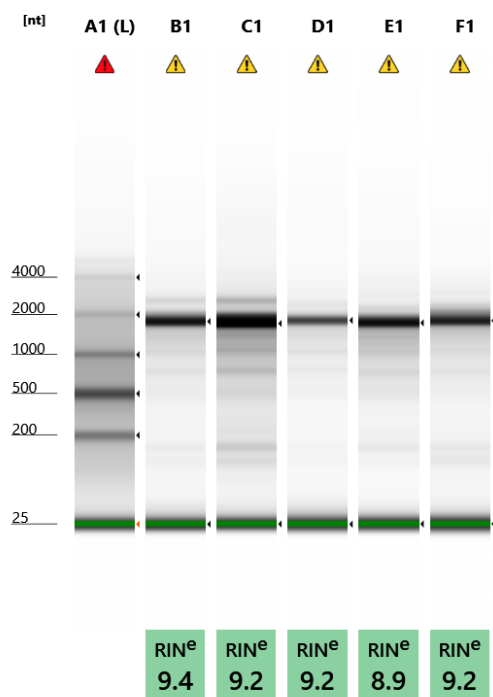


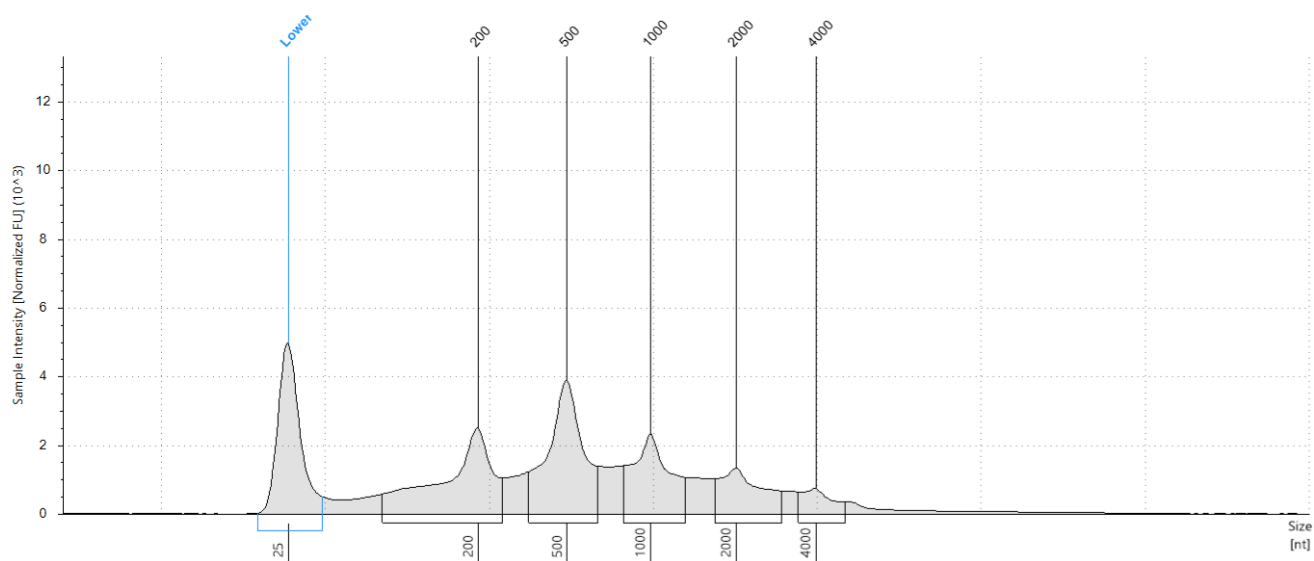
Filename: 2020-08-27 - 17.17.31.RNA



Default image (Contrast 100%)

Sample Info

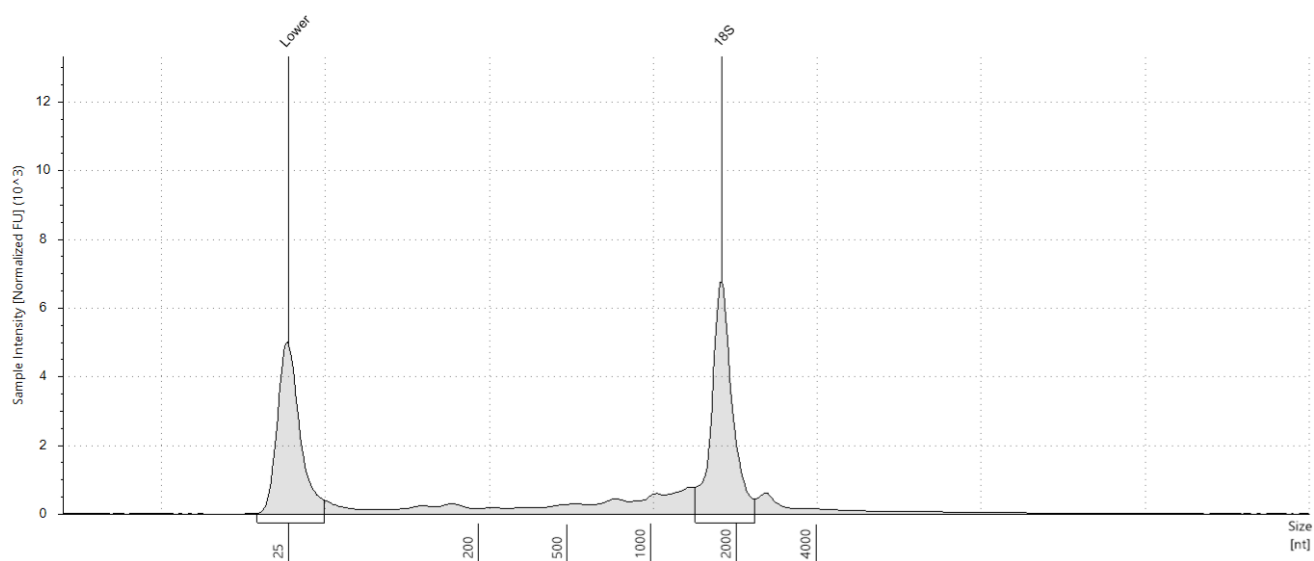
Well	RINe	28S/18S (Area)	Conc. [ng/μl]	Sample Description	Alert	Observations
A1	-	-	100	Ladder	▲	Issue with ladder peak detection (too few peaks detected); Caution! Expired ScreenTape device; Ladder
B1	9.4	-	46.3	29	⚠	Caution! Expired ScreenTape device; The upper ribosomal fragment has degraded
C1	9.2	-	94.8	10	⚠	Caution! Expired ScreenTape device; The upper ribosomal fragment has degraded
D1	9.2	-	27.2	462	⚠	Caution! Expired ScreenTape device; The upper ribosomal fragment has degraded
E1	8.9	-	51.3	343	⚠	Caution! Expired ScreenTape device; The upper ribosomal fragment has degraded
F1	9.2	-	40.0	374	⚠	Caution! Expired ScreenTape device; The upper ribosomal fragment has degraded

A1: Ladder**Sample Table**

Well	RINe	28S/18S (Area)	Conc. [ng/μl]	Sample Description	Alert	Observations
A1	-	-	100	Ladder	▲	Issue with ladder peak detection (too few peaks detected); Caution! Expired ScreenTape device; Ladder

Peak Table

Size [nt]	Calibrated Conc. [ng/μl]	Assigned Conc. [ng/μl]	Peak Molarity [nmol/l]	% Integrated Area	Peak Comment	Observations
25	40.0	40.0	4710	-		Lower Marker
200	21.9	-	322	28.79		
500	24.5	-	144	32.16		
1000	15.4	-	45.2	20.21		
2000	10.2	-	15.0	13.37		
4000	4.16	-	3.06	5.46		

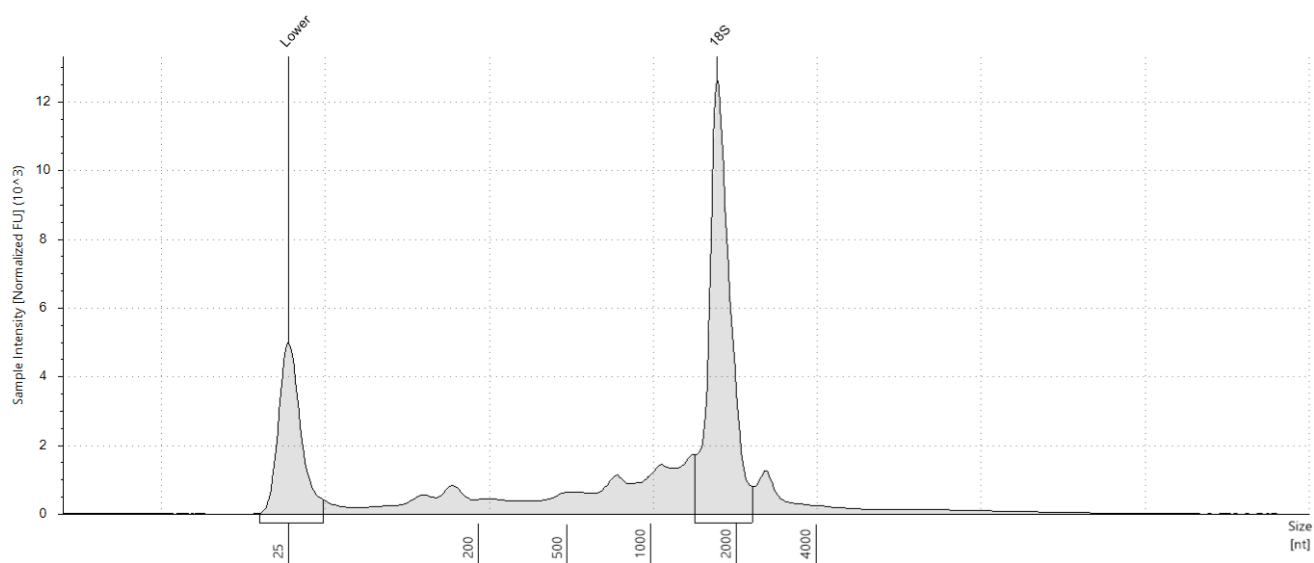
B1: 29**Sample Table**

Well	RINe	28S/18S (Area)	Conc. [ng/μl]	Sample Description	Alert	Observations
B1	9.4	-	46.3	29	⚠	Caution! Expired ScreenTape device; The upper ribosomal fragment has degraded

Peak Table

Size [nt]	Calibrated Conc. [ng/μl]	Assigned Conc. [ng/μl]	Peak Molarity [nmol/l]	% Integrated Area	Peak Comment	Observations
25	40.0	40.0	4710	-		Lower Marker
1773	24.9	-	41.3	100.00		18S

C1: 10

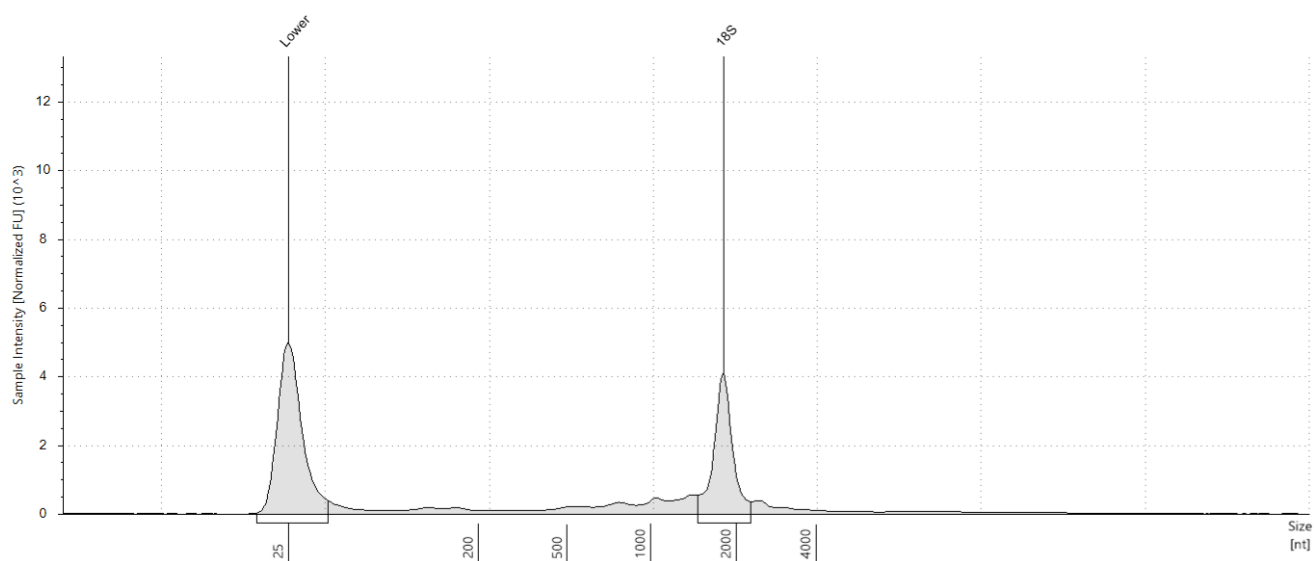


Sample Table

Well	RINe	28S/18S (Area)	Conc. [ng/μl]	Sample Description	Alert	Observations
C1	9.2	-	94.8	10	⚠	Caution! Expired ScreenTape device; The upper ribosomal fragment has degraded

Peak Table

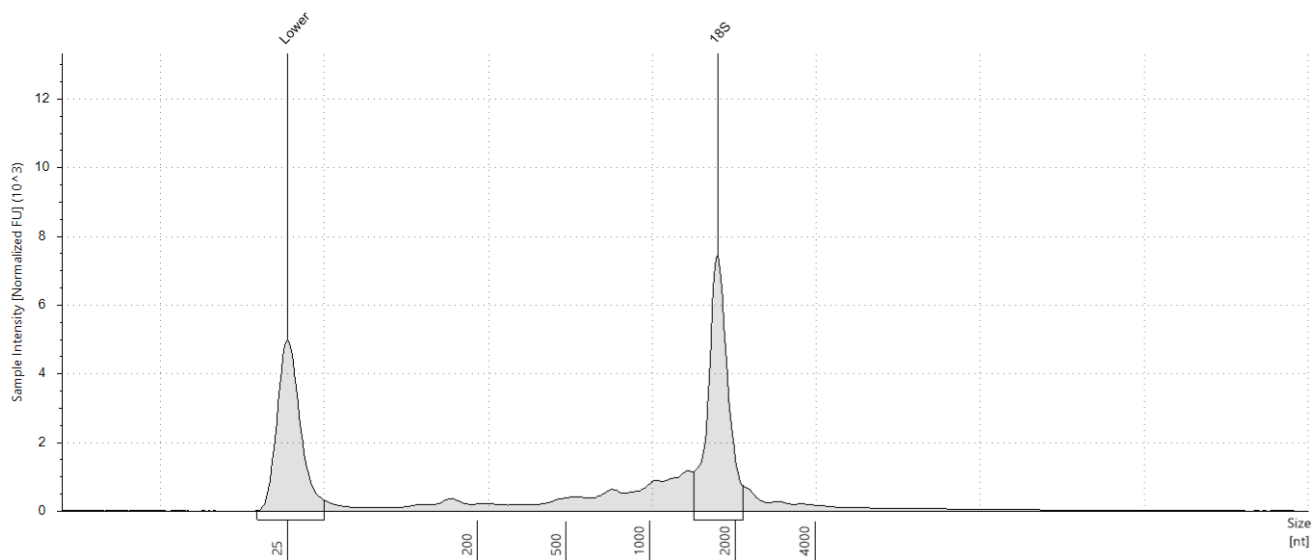
Size [nt]	Calibrated Conc. [ng/μl]	Assigned Conc. [ng/μl]	Peak Molarity [nmol/l]	% Integrated Area	Peak Comment	Observations
25	40.0	40.0	4710	-		Lower Marker
1716	48.2	-	82.6	100.00		18S

D1: 462**Sample Table**

Well	RINe	28S/18S (Area)	Conc. [ng/μl]	Sample Description	Alert	Observations
D1	9.2	-	27.2	462	⚠	Caution! Expired ScreenTape device; The upper ribosomal fragment has degraded

Peak Table

Size [nt]	Calibrated Conc. [ng/μl]	Assigned Conc. [ng/μl]	Peak Molarity [nmol/l]	% Integrated Area	Peak Comment	Observations
25	40.0	40.0	4710	-		Lower Marker
1811	12.6	-	20.5	100.00		18S

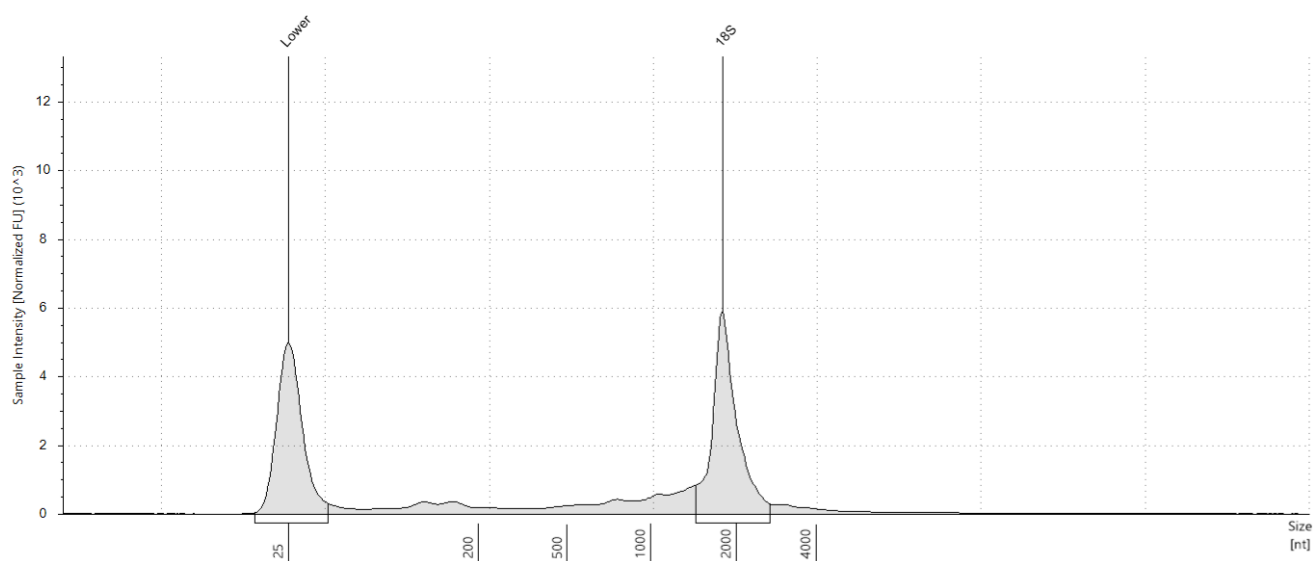
E1: 343**Sample Table**

Well	RINe	28S/18S (Area)	Conc. [ng/μl]	Sample Description	Alert	Observations
E1	8.9	-	51.3	343	⚠	Caution! Expired ScreenTape device; The upper ribosomal fragment has degraded

Peak Table

Size [nt]	Calibrated Conc. [ng/μl]	Assigned Conc. [ng/μl]	Peak Molarity [nmol/l]	% Integrated Area	Peak Comment	Observations
25	40.0	40.0	4710	-		Lower Marker
1731	25.6	-	43.4	100.00		18S

F1: 374



Sample Table

Well	RINe	28S/18S (Area)	Conc. [ng/μl]	Sample Description	Alert	Observations
F1	9.2	-	40.0	374	⚠	Caution! Expired ScreenTape device; The upper ribosomal fragment has degraded

Peak Table

Size [nt]	Calibrated Conc. [ng/μl]	Assigned Conc. [ng/μl]	Peak Molarity [nmol/l]	% Integrated Area	Peak Comment	Observations
25	40.0	40.0	4710	-		Lower Marker
1794	22.7	-	37.2	100.00		18S