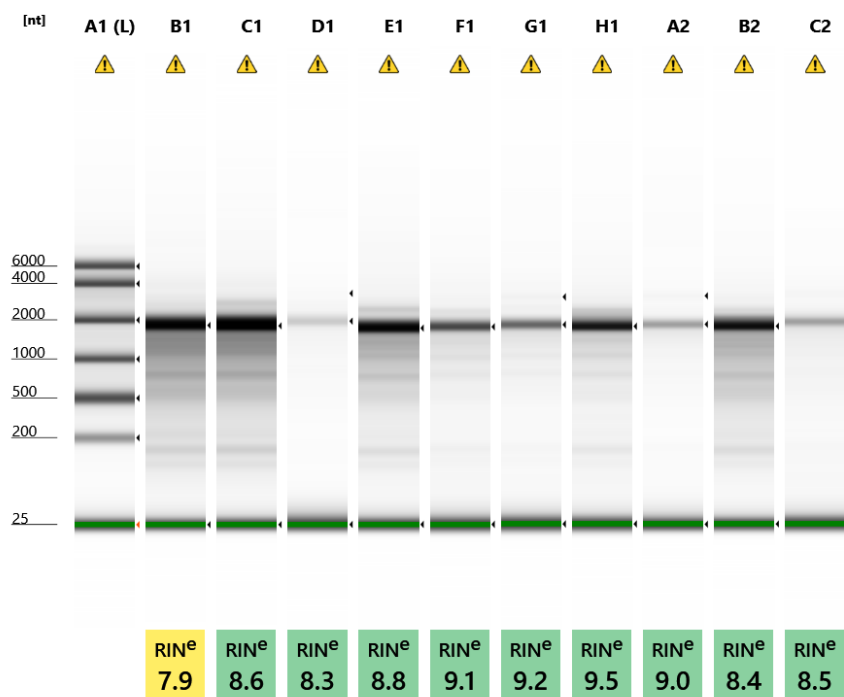




Filename: 2020-09-03 - 16.45.48.RNA

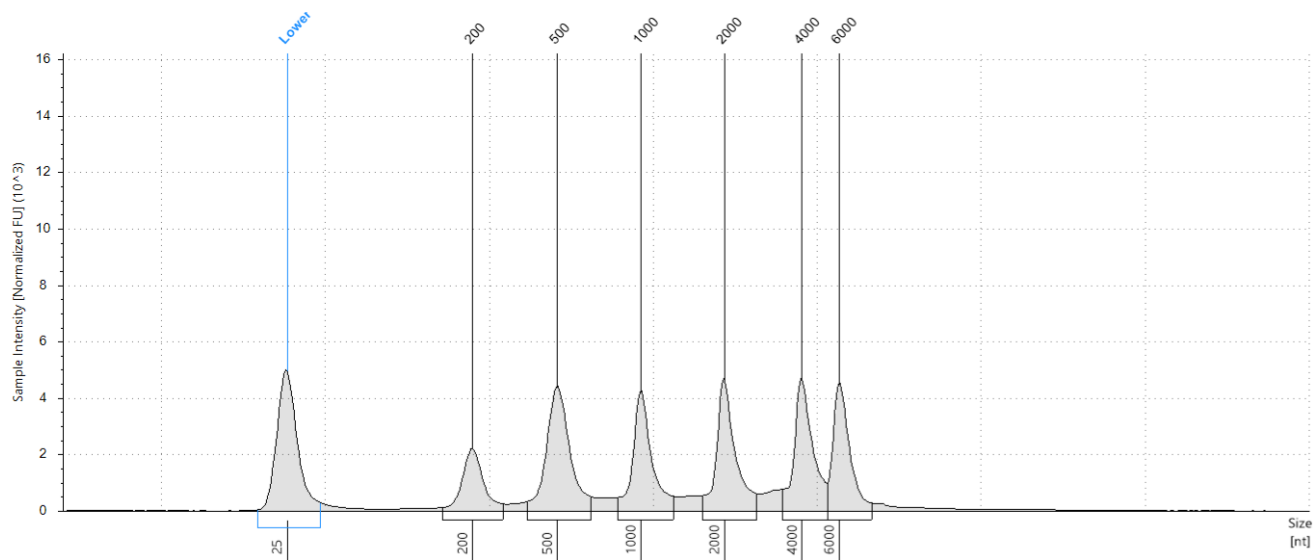


Default image (Contrast 100%)

Sample Info

Well	RINe	28S/18S (Area)	Conc. [ng/μl]	Sample Description	Alert	Observations
A1	-	-	119	Ladder	⚠	Caution! Expired ScreenTape device; Ladder
B1	7.9	-	137	362	⚠	Caution! Expired ScreenTape device; The upper ribosomal fragment has degraded
C1	8.6	-	147	393	⚠	Caution! Expired ScreenTape device; The upper ribosomal fragment has degraded
D1	8.3	0.1	11.6	426	⚠	Caution! Expired ScreenTape device; Sample concentration outside functional range for RINe and the assay; The upper ribosomal fragment has degraded
E1	8.8	-	92.4	326	⚠	Caution! Expired ScreenTape device; The upper ribosomal fragment has degraded
F1	9.1	-	36.7	385	⚠	Caution! Expired ScreenTape device; The upper ribosomal fragment has degraded
G1	9.2	0.1	26.1	370	⚠	Caution! Expired ScreenTape device; The upper ribosomal fragment has degraded
H1	9.5	-	56.9	409	⚠	Caution! Expired ScreenTape device; The upper ribosomal fragment has degraded
A2	9.0	0.1	18.0	819	⚠	Caution! Expired ScreenTape device; Sample concentration outside functional range for RINe and the assay; The upper ribosomal fragment has degraded

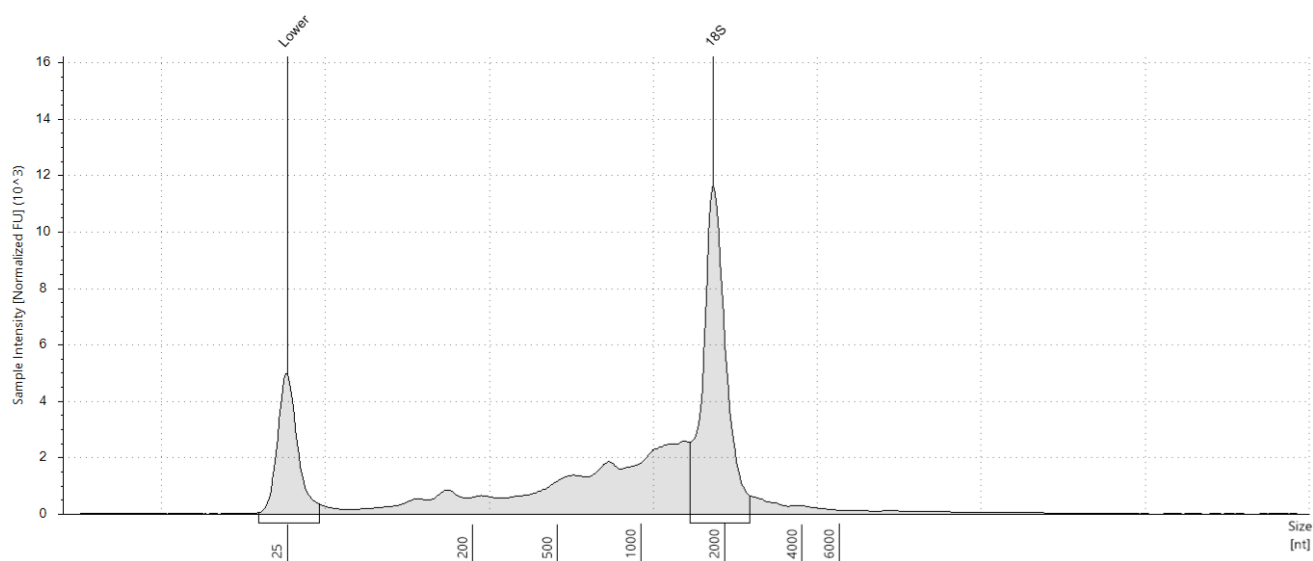
B2	8.4	-	86.2	757		Caution! Expired ScreenTape device; The upper ribosomal fragment has degraded
C2	8.5	0.1	19.7	774		Caution! Expired ScreenTape device; Sample concentration outside functional range for RINe and the assay; The upper ribosomal fragment has degraded

A1: Ladder**Sample Table**

Well	RINe	28S/18S (Area)	Conc. [ng/μl]	Sample Description	Alert	Observations
A1	-	-	119	Ladder	⚠	Caution! Expired ScreenTape device; Ladder

Peak Table

Size [nt]	Calibrated Conc. [ng/μl]	Assigned Conc. [ng/μl]	Peak Molarity [nmol/l]	% Integrated Area	Peak Comment	Observations
25	40.0	40.0	4710	-		Lower Marker
200	10.1	-	149	9.69		
500	22.5	-	132	21.47		
1000	17.4	-	51.2	16.63		
2000	19.0	-	27.9	18.13		
4000	19.2	-	14.1	18.30		
6000	16.5	-	8.10	15.77		

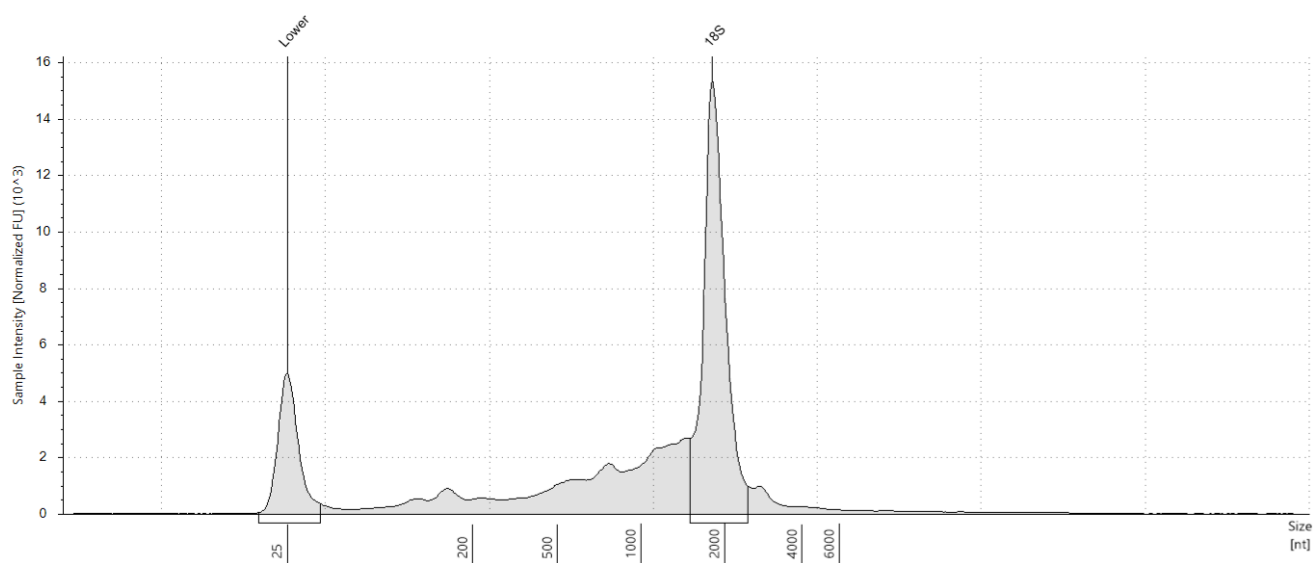
B1: 362**Sample Table**

Well	RINe	28S/18S (Area)	Conc. [ng/μl]	Sample Description	Alert	Observations
B1	7.9	-	137	362	⚠	Caution! Expired ScreenTape device; The upper ribosomal fragment has degraded

Peak Table

Size [nt]	Calibrated Conc. [ng/μl]	Assigned Conc. [ng/μl]	Peak Molarity [nmol/l]	% Integrated Area	Peak Comment	Observations
25	40.0	40.0	4710	-		Lower Marker
1827	58.6	-	94.3	100.00		18S

C1: 393



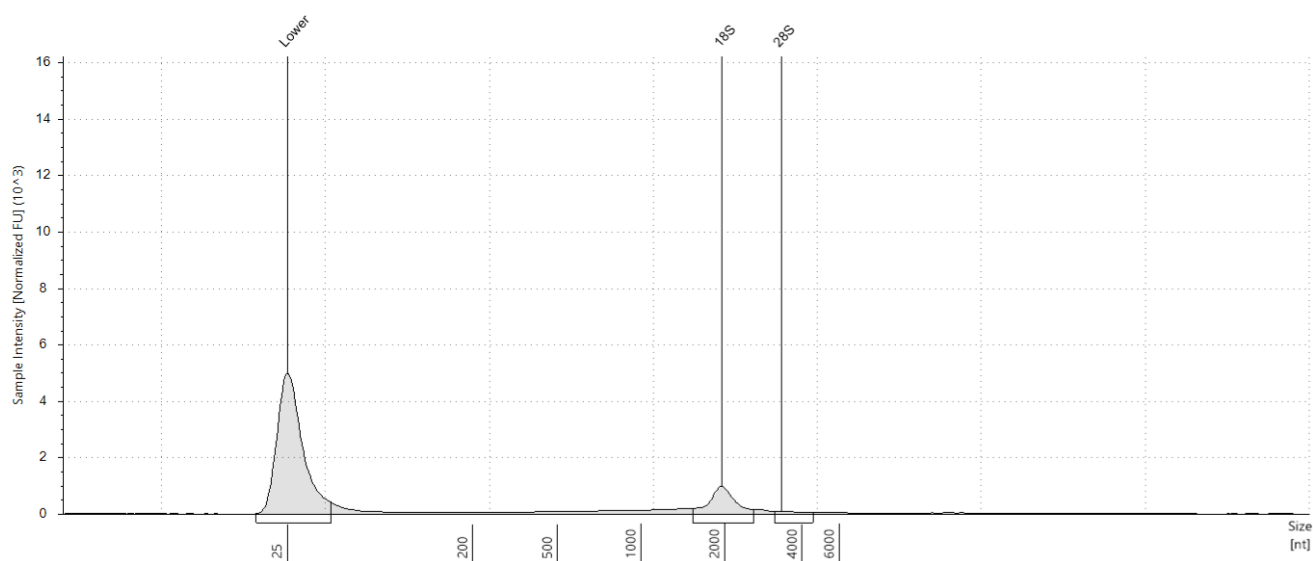
Sample Table

Well	RINe	28S/18S (Area)	Conc. [ng/μl]	Sample Description	Alert	Observations
C1	8.6	-	147	393		Caution! Expired ScreenTape device; The upper ribosomal fragment has degraded

Peak Table

Size [nt]	Calibrated Conc. [ng/μl]	Assigned Conc. [ng/μl]	Peak Molarity [nmol/l]	% Integrated Area	Peak Comment	Observations
25	40.0	40.0	4710	-		Lower Marker
1807	72.6	-	118	100.00		18S

D1: 426

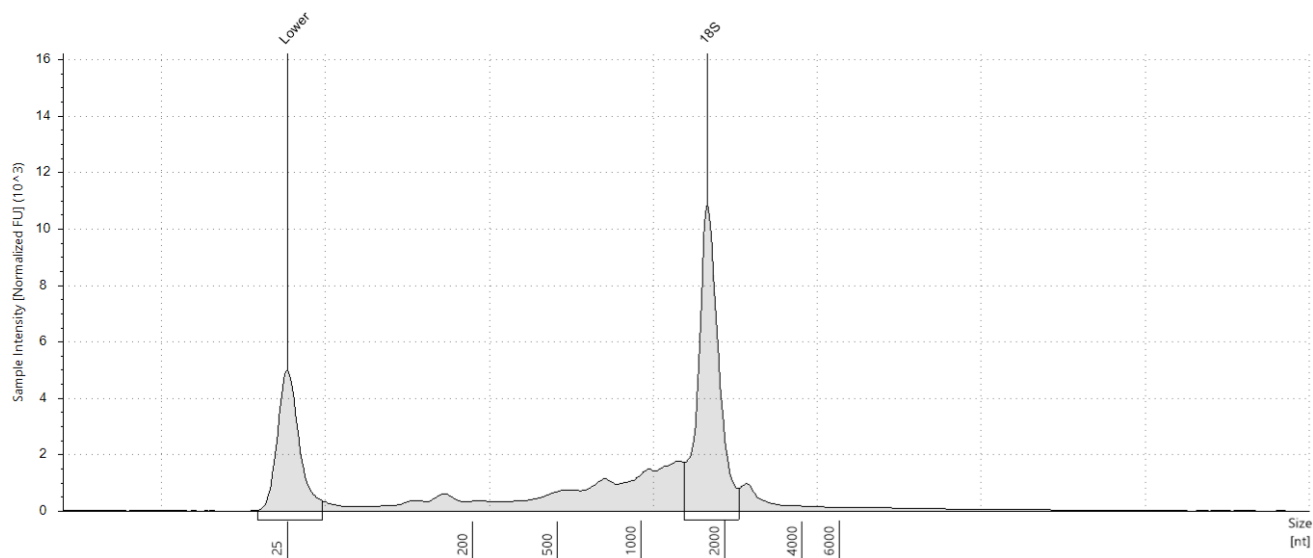


Sample Table

Well	RINe	28S/18S (Area)	Conc. [ng/μl]	Sample Description	Alert	Observations
D1	8.3	0.1	11.6	426		Caution! Expired ScreenTape device; Sample concentration outside functional range for RINe and the assay; The upper ribosomal fragment has degraded

Peak Table

Size [nt]	Calibrated Conc. [ng/μl]	Assigned Conc. [ng/μl]	Peak Molarity [nmol/l]	% Integrated Area	Peak Comment	Observations
25	40.0	40.0	4710	-		Lower Marker
1958	4.24	-	6.37	90.81		18S
3316	0.429	-	0.380	9.19		28S

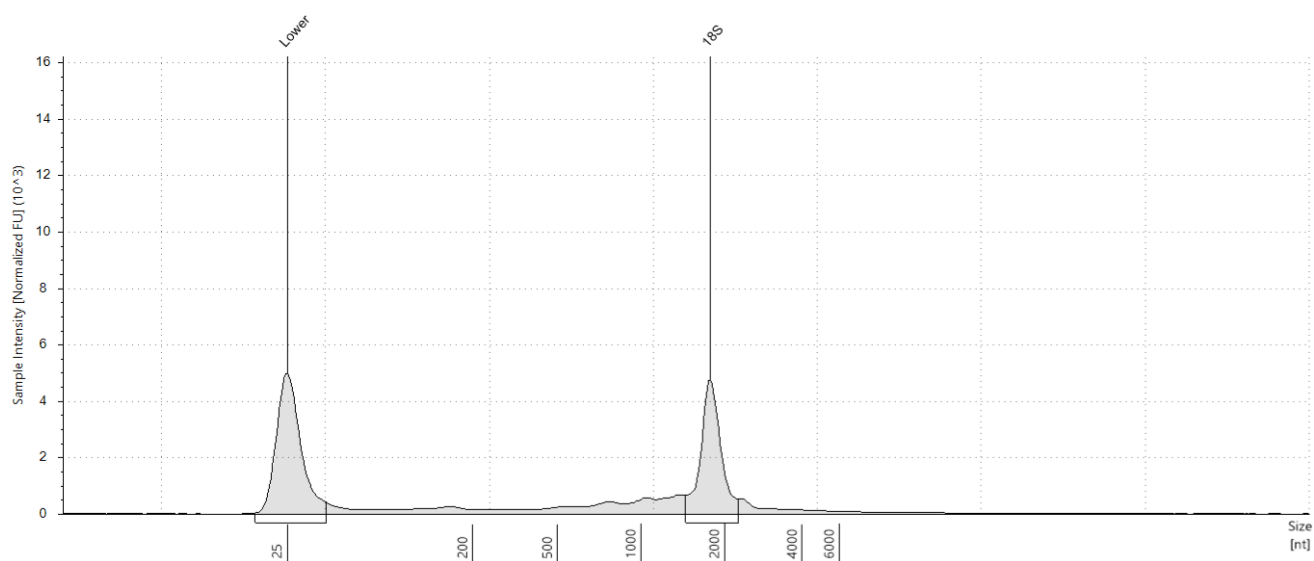
E1: 326**Sample Table**

Well	RINe	28S/18S (Area)	Conc. [ng/μl]	Sample Description	Alert	Observations
E1	8.8	-	92.4	326		Caution! Expired ScreenTape device; The upper ribosomal fragment has degraded

Peak Table

Size [nt]	Calibrated Conc. [ng/μl]	Assigned Conc. [ng/μl]	Peak Molarity [nmol/l]	% Integrated Area	Peak Comment	Observations
25	40.0	40.0	4710	-		Lower Marker
1731	44.9	-	76.4	100.00		18S

F1: 385



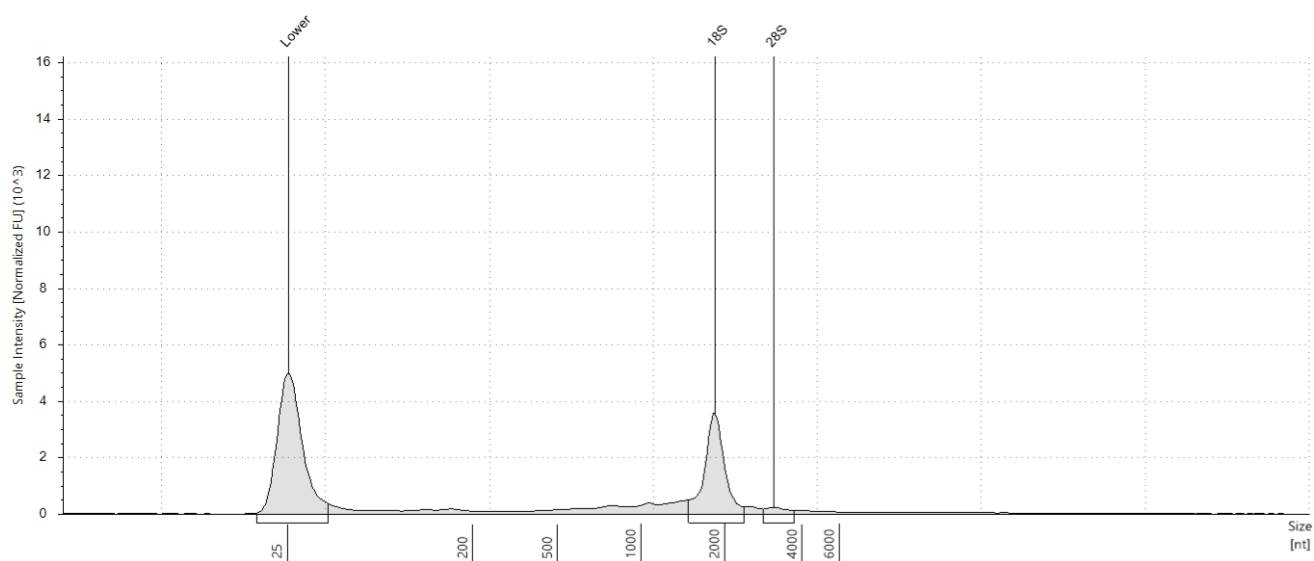
Sample Table

Well	RINe	28S/18S (Area)	Conc. [ng/μl]	Sample Description	Alert	Observations
F1	9.1	-	36.7	385	⚠	Caution! Expired ScreenTape device; The upper ribosomal fragment has degraded

Peak Table

Size [nt]	Calibrated Conc. [ng/μl]	Assigned Conc. [ng/μl]	Peak Molarity [nmol/l]	% Integrated Area	Peak Comment	Observations
25	40.0	40.0	4710	-		Lower Marker
1773	17.3	-	28.7	100.00		18S

G1: 370

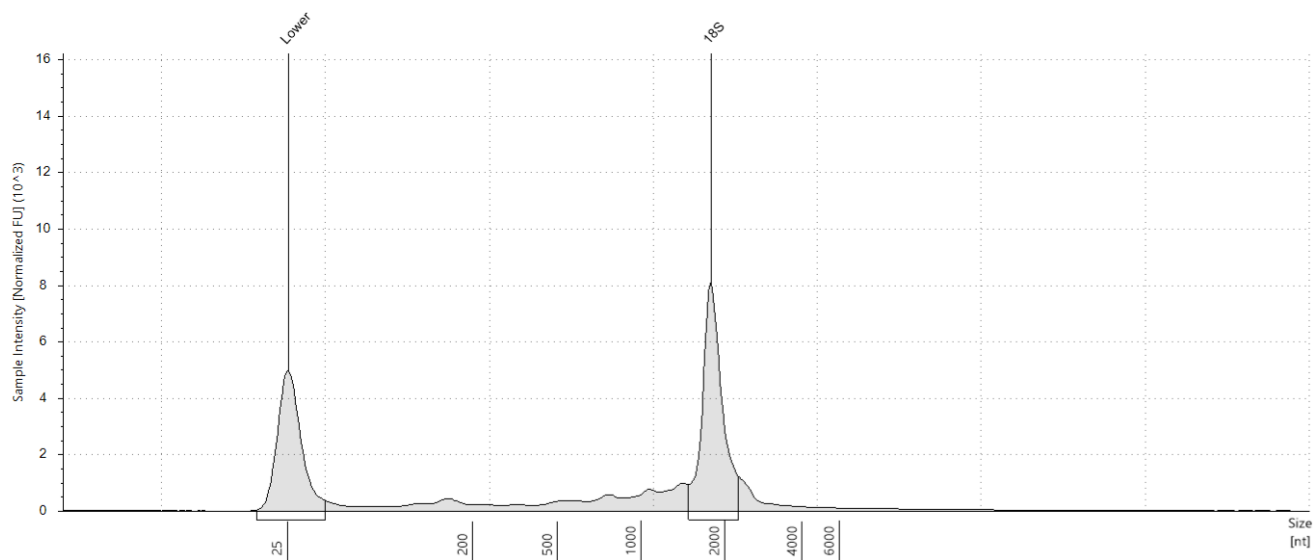


Sample Table

Well	RINe	28S/18S (Area)	Conc. [ng/μl]	Sample Description	Alert	Observations
G1	9.2	0.1	26.1	370	⚠	Caution! Expired ScreenTape device; The upper ribosomal fragment has degraded

Peak Table

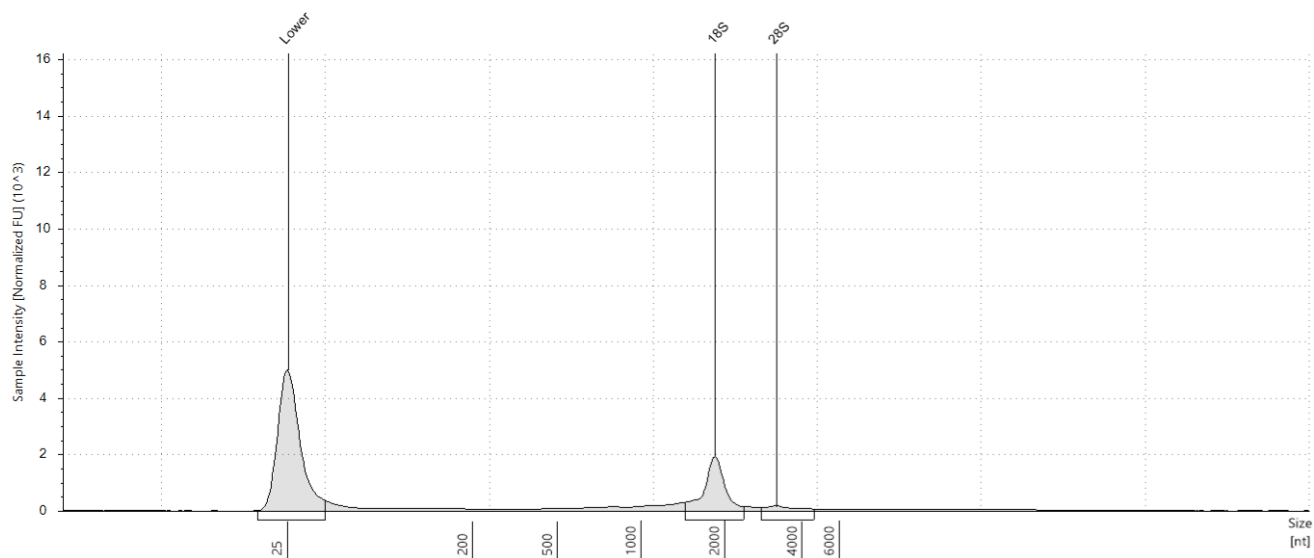
Size [nt]	Calibrated Conc. [ng/μl]	Assigned Conc. [ng/μl]	Peak Molarity [nmol/l]	% Integrated Area	Peak Comment	Observations
25	40.0	40.0	4710	-		Lower Marker
1829	12.5	-	20.0	93.51		18S
3087	0.865	-	0.825	6.49		28S

H1: 409**Sample Table**

Well	RINe	28S/18S (Area)	Conc. [ng/μl]	Sample Description	Alert	Observations
H1	9.5	-	56.9	409	⚠	Caution! Expired ScreenTape device; The upper ribosomal fragment has degraded

Peak Table

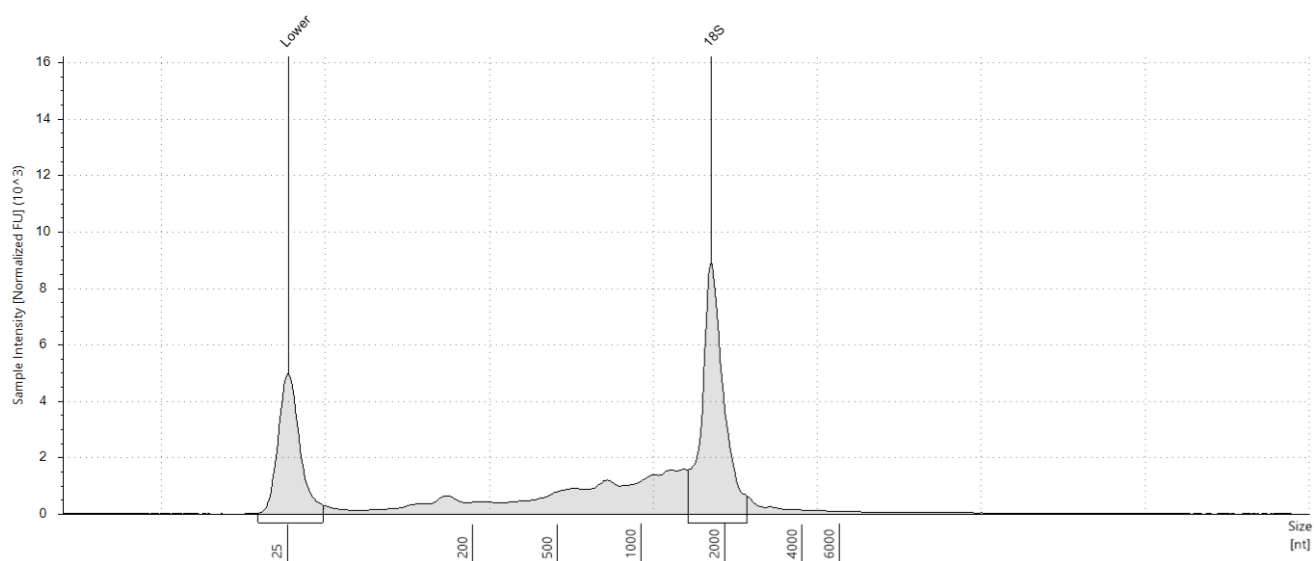
Size [nt]	Calibrated Conc. [ng/μl]	Assigned Conc. [ng/μl]	Peak Molarity [nmol/l]	% Integrated Area	Peak Comment	Observations
25	40.0	40.0	4710	-		Lower Marker
1776	29.8	-	49.3	100.00		18S

A2: 819**Sample Table**

Well	RINe	28S/18S (Area)	Conc. [ng/μl]	Sample Description	Alert	Observations
A2	9.0	0.1	18.0	819		Caution! Expired ScreenTape device; Sample concentration outside functional range for RINe and the assay; The upper ribosomal fragment has degraded

Peak Table

Size [nt]	Calibrated Conc. [ng/μl]	Assigned Conc. [ng/μl]	Peak Molarity [nmol/l]	% Integrated Area	Peak Comment	Observations
25	40.0	40.0	4710	-		Lower Marker
1848	7.65	-	12.2	88.42		18S
3165	1.00	-	0.931	11.58		28S

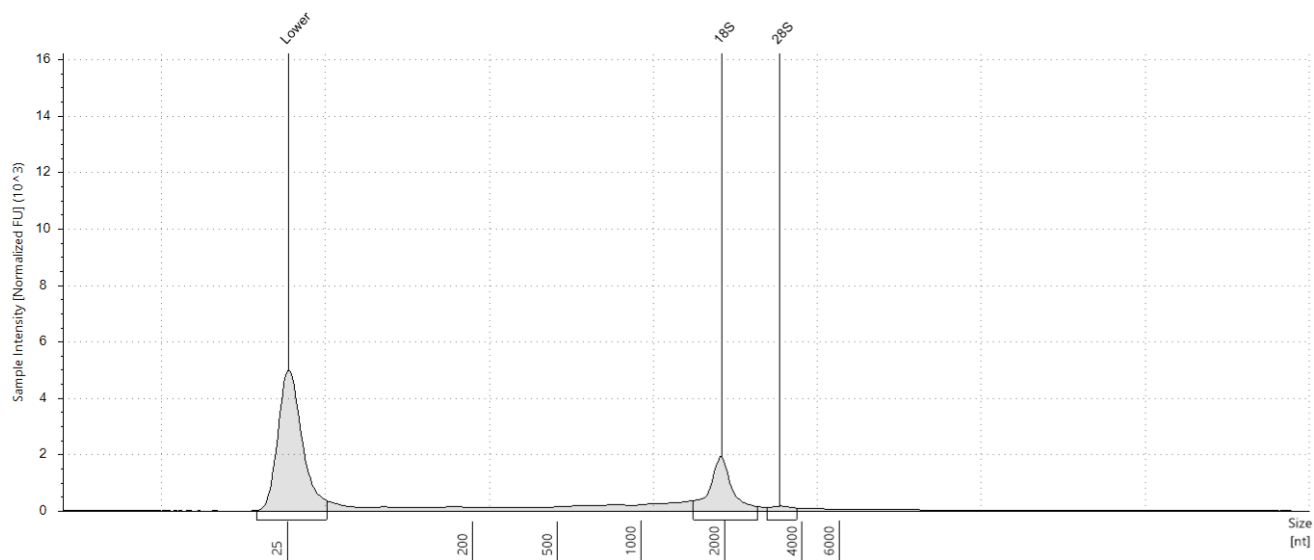
B2: 757**Sample Table**

Well	RINe	28S/18S (Area)	Conc. [ng/μl]	Sample Description	Alert	Observations
B2	8.4	-	86.2	757	⚠	Caution! Expired ScreenTape device; The upper ribosomal fragment has degraded

Peak Table

Size [nt]	Calibrated Conc. [ng/μl]	Assigned Conc. [ng/μl]	Peak Molarity [nmol/l]	% Integrated Area	Peak Comment	Observations
25	40.0	40.0	4710	-		Lower Marker
1780	39.2	-	64.8	100.00		18S

C2: 774



Sample Table

Well	RINe	28S/18S (Area)	Conc. [ng/μl]	Sample Description	Alert	Observations
C2	8.5	0.1	19.7	774		Caution! Expired ScreenTape device; Sample concentration outside functional range for RINe and the assay; The upper ribosomal fragment has degraded

Peak Table

Size [nt]	Calibrated Conc. [ng/μl]	Assigned Conc. [ng/μl]	Peak Molarity [nmol/l]	% Integrated Area	Peak Comment	Observations
25	40.0	40.0	4710	-		Lower Marker
1941	7.75	-	11.7	91.87		18S
3255	0.686	-	0.620	8.13		28S