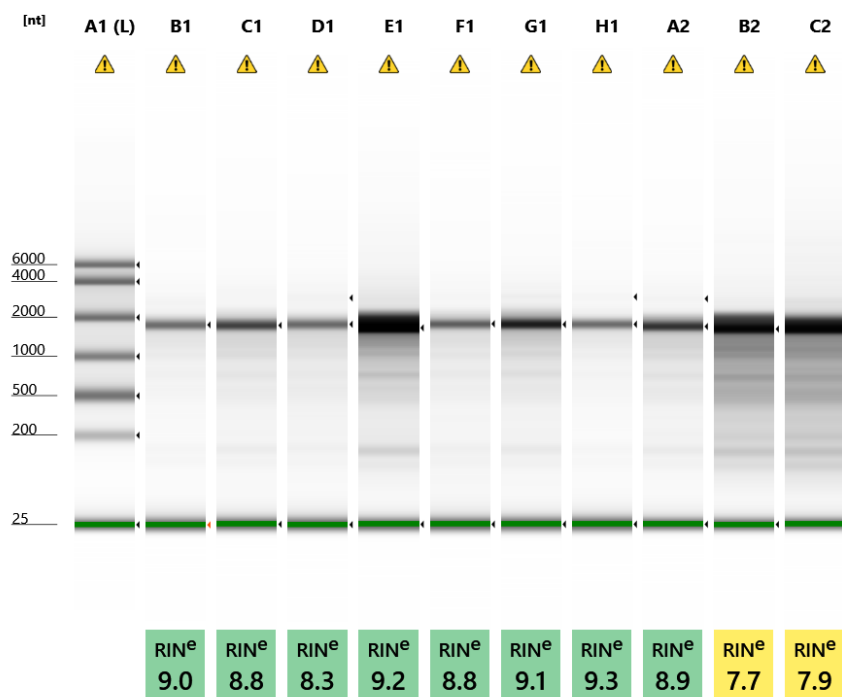


Filename: 2020-09-03 - 17.02.55.RNA

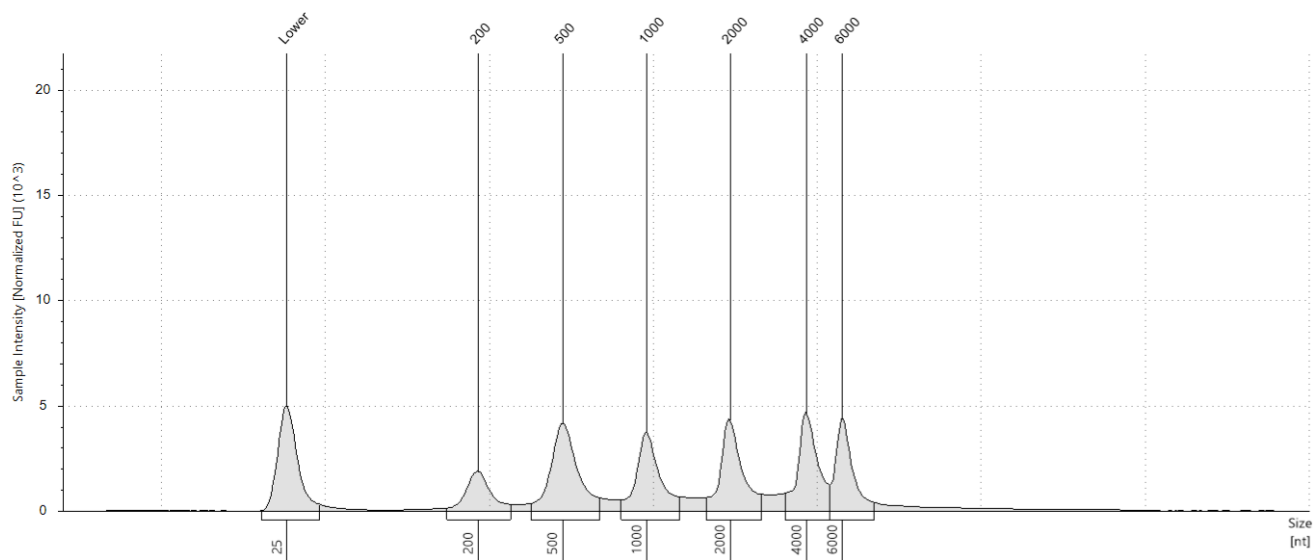


Default image (Contrast 100%)

Sample Info

Well	RINe	28S/18S (Area)	Conc. [ng/μl]	Sample Description	Alert	Observations
A1	-	-	128	Ladder	⚠	Caution! Expired ScreenTape device; Ladder
B1	9.0	-	35.1	1641	⚠	Caution! Expired ScreenTape device; The upper ribosomal fragment has degraded
C1	8.8	-	56.2	1480	⚠	Caution! Expired ScreenTape device; The upper ribosomal fragment has degraded
D1	8.3	0.1	45.2	1630	⚠	Caution! Expired ScreenTape device; The upper ribosomal fragment has degraded
E1	9.2	-	171	1545	⚠	Caution! Expired ScreenTape device; The upper ribosomal fragment has degraded
F1	8.8	-	42.6	1623	⚠	Caution! Expired ScreenTape device; The upper ribosomal fragment has degraded
G1	9.1	-	70.7	1611	⚠	Caution! Expired ScreenTape device; The upper ribosomal fragment has degraded
H1	9.3	0.1	30.4	1462	⚠	Caution! Expired ScreenTape device; The upper ribosomal fragment has degraded
A2	8.9	0.1	66.4	1557	⚠	Caution! Expired ScreenTape device; The upper ribosomal fragment has degraded
B2	7.7	-	185	1455	⚠	Caution! Expired ScreenTape device; The upper ribosomal fragment has degraded

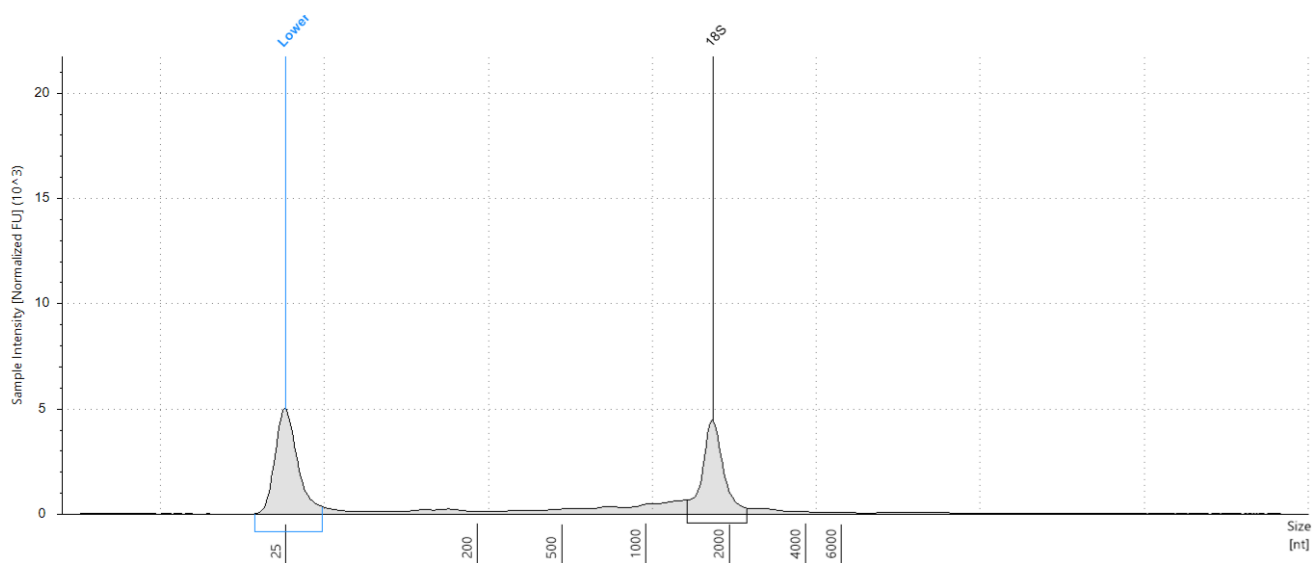
C2	7.9	-	201	1572		Caution! Expired ScreenTape device; The upper ribosomal fragment has degraded
----	-----	---	-----	------	---	---

A1: Ladder**Sample Table**

Well	RINe	28S/18S (Area)	Conc. [ng/μl]	Sample Description	Alert	Observations
A1	-	-	128	Ladder	⚠	Caution! Expired ScreenTape device; Ladder

Peak Table

Size [nt]	Calibrated Conc. [ng/μl]	Assigned Conc. [ng/μl]	Peak Molarity [nmol/l]	% Integrated Area	Peak Comment	Observations
25	40.0	40.0	4710	-		Lower Marker
200	10.2	-	150	9.27		
500	24.3	-	143	22.02		
1000	18.7	-	55.1	16.96		
2000	20.4	-	30.0	18.47		
4000	20.3	-	14.9	18.35		
6000	16.5	-	8.08	14.93		

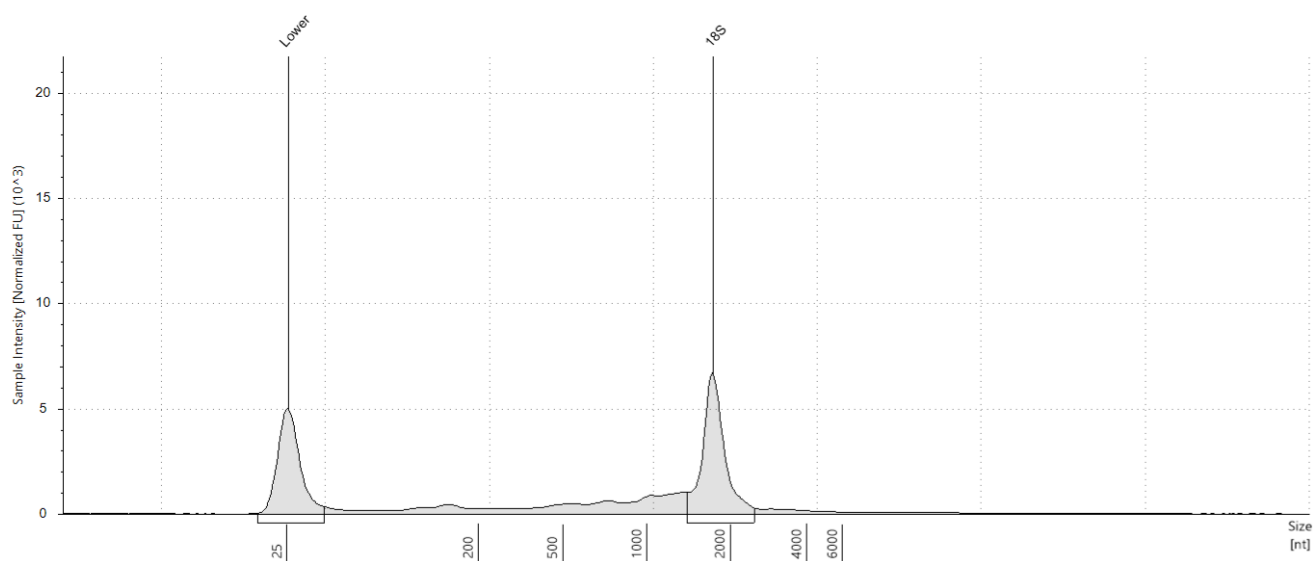
B1: 1641**Sample Table**

Well	RINe	28S/18S (Area)	Conc. [ng/μl]	Sample Description	Alert	Observations
B1	9.0	-	35.1	1641	⚠	Caution! Expired ScreenTape device; The upper ribosomal fragment has degraded

Peak Table

Size [nt]	Calibrated Conc. [ng/μl]	Assigned Conc. [ng/μl]	Peak Molarity [nmol/l]	% Integrated Area	Peak Comment	Observations
25	40.0	40.0	4710	-		Lower Marker
1752	17.9	-	30.0	100.00		18S

C1: 1480

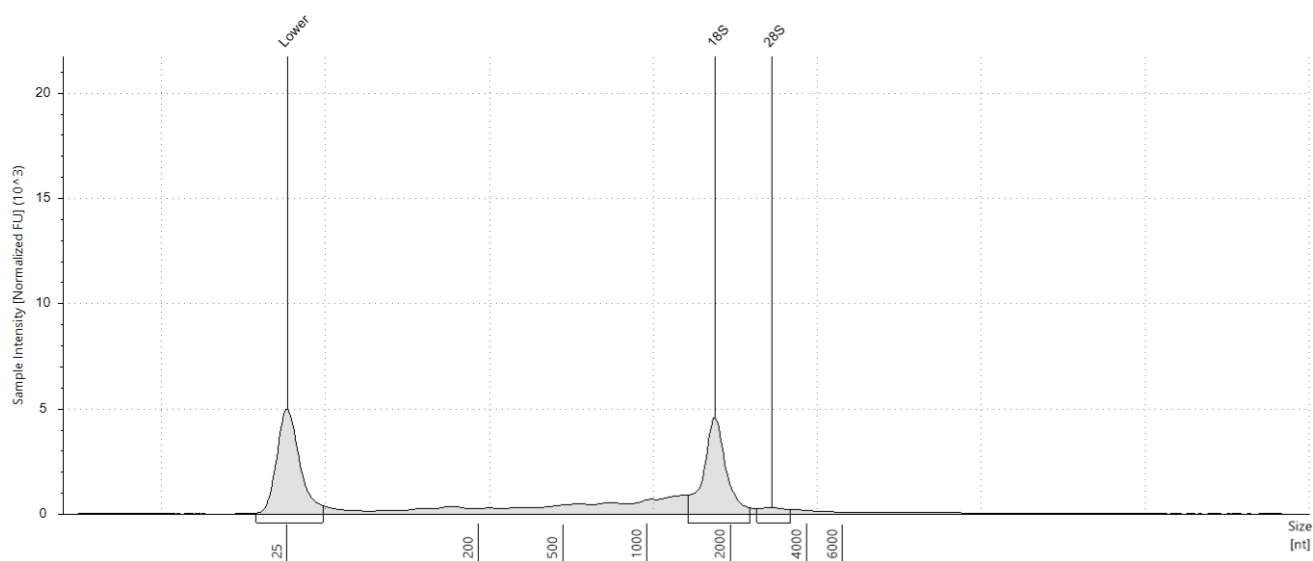


Sample Table

Well	RINe	28S/18S (Area)	Conc. [ng/μl]	Sample Description	Alert	Observations
C1	8.8	-	56.2	1480	⚠	Caution! Expired ScreenTape device; The upper ribosomal fragment has degraded

Peak Table

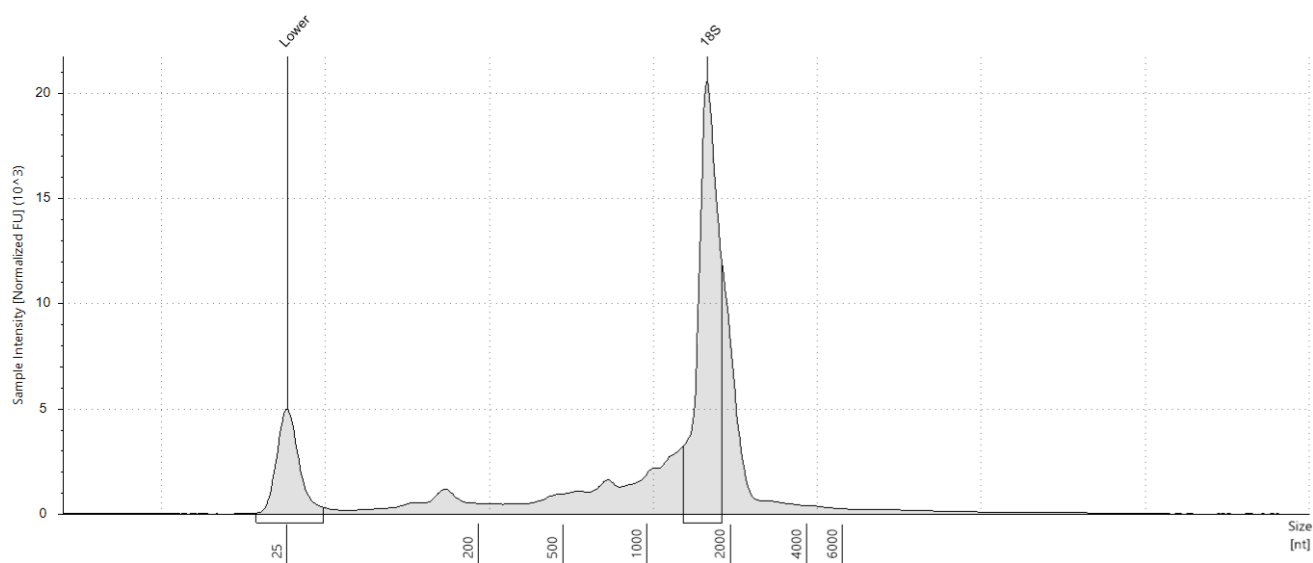
Size [nt]	Calibrated Conc. [ng/μl]	Assigned Conc. [ng/μl]	Peak Molarity [nmol/l]	% Integrated Area	Peak Comment	Observations
25	40.0	40.0	4710	-		Lower Marker
1725	27.8	-	47.4	100.00		18S

D1: 1630**Sample Table**

Well	RINe	28S/18S (Area)	Conc. [ng/μl]	Sample Description	Alert	Observations
D1	8.3	0.1	45.2	1630	⚠	Caution! Expired ScreenTape device; The upper ribosomal fragment has degraded

Peak Table

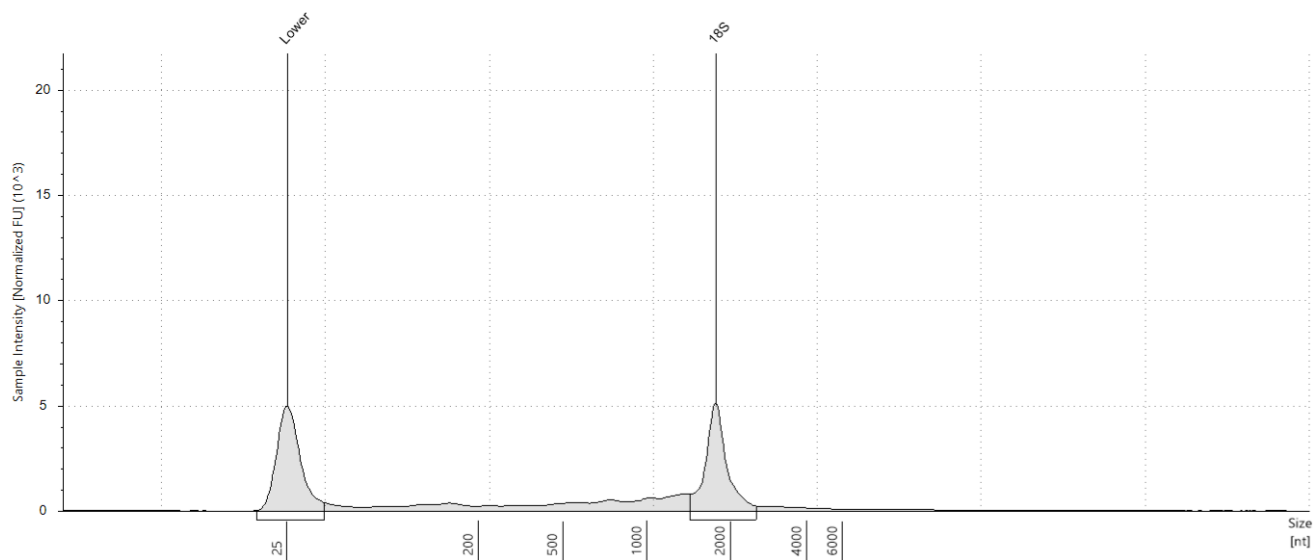
Size [nt]	Calibrated Conc. [ng/μl]	Assigned Conc. [ng/μl]	Peak Molarity [nmol/l]	% Integrated Area	Peak Comment	Observations
25	40.0	40.0	4710	-		Lower Marker
1765	19.4	-	32.3	93.10		18S
2906	1.44	-	1.46	6.90		28S

E1: 1545**Sample Table**

Well	RINe	28S/18S (Area)	Conc. [ng/μl]	Sample Description	Alert	Observations
E1	9.2	-	171	1545		Caution! Expired ScreenTape device; The upper ribosomal fragment has degraded

Peak Table

Size [nt]	Calibrated Conc. [ng/μl]	Assigned Conc. [ng/μl]	Peak Molarity [nmol/l]	% Integrated Area	Peak Comment	Observations
25	40.0	40.0	4710	-		Lower Marker
1653	78.3	-	139	100.00		18S

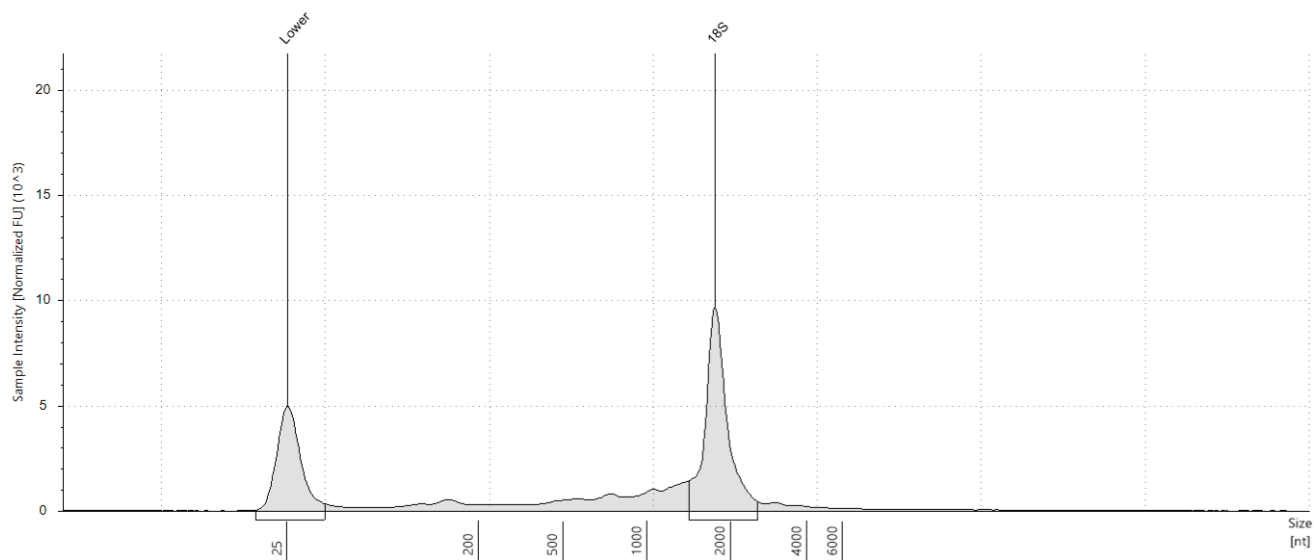
F1: 1623**Sample Table**

Well	RINe	28S/18S (Area)	Conc. [ng/μl]	Sample Description	Alert	Observations
F1	8.8	-	42.6	1623	⚠	Caution! Expired ScreenTape device; The upper ribosomal fragment has degraded

Peak Table

Size [nt]	Calibrated Conc. [ng/μl]	Assigned Conc. [ng/μl]	Peak Molarity [nmol/l]	% Integrated Area	Peak Comment	Observations
25	40.0	40.0	4710	-		Lower Marker
1771	19.7	-	32.7	100.00		18S

G1: 1611

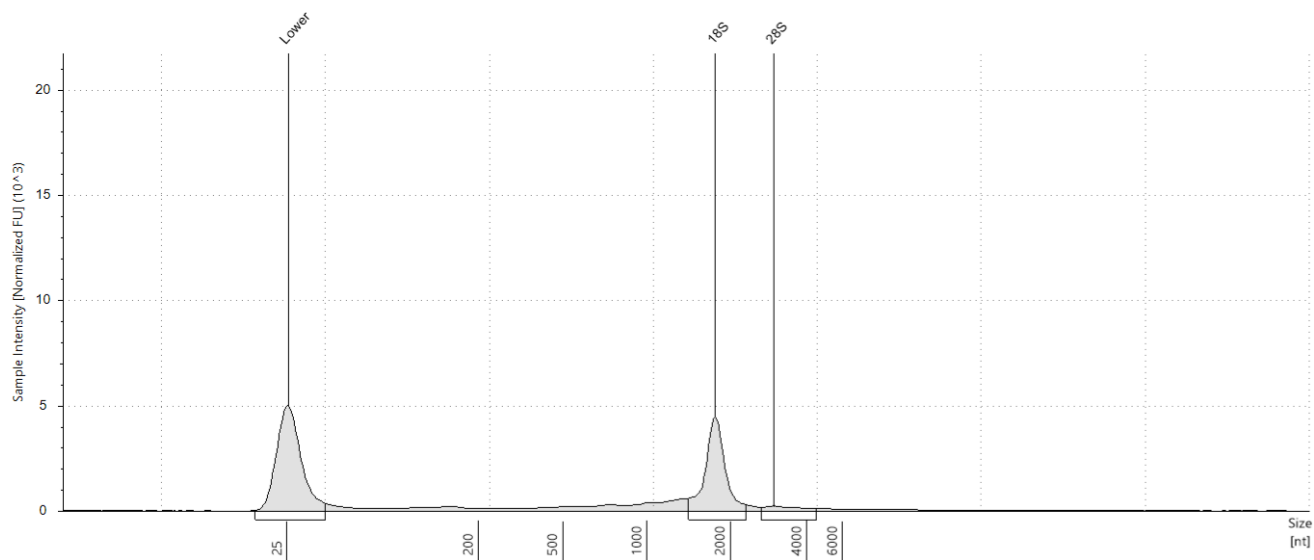


Sample Table

Well	RINe	28S/18S (Area)	Conc. [ng/μl]	Sample Description	Alert	Observations
G1	9.1	-	70.7	1611		Caution! Expired ScreenTape device; The upper ribosomal fragment has degraded

Peak Table

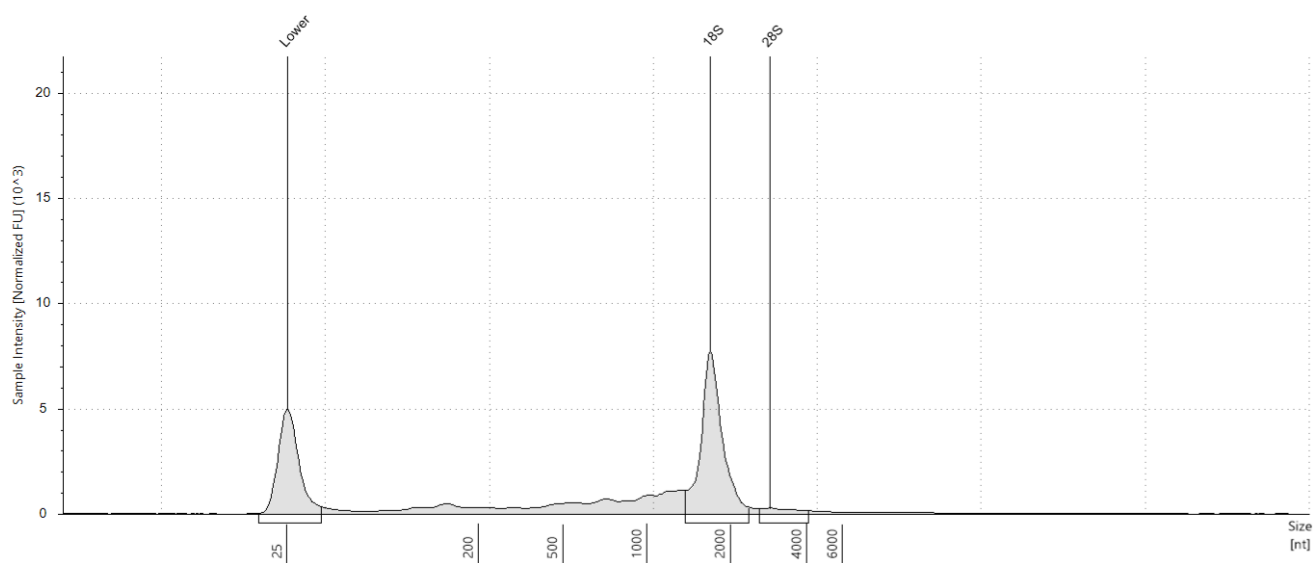
Size [nt]	Calibrated Conc. [ng/μl]	Assigned Conc. [ng/μl]	Peak Molarity [nmol/l]	% Integrated Area	Peak Comment	Observations
25	40.0	40.0	4710	-		Lower Marker
1756	38.6	-	64.6	100.00		18S

H1: 1462**Sample Table**

Well	RINe	28S/18S (Area)	Conc. [ng/μl]	Sample Description	Alert	Observations
H1	9.3	0.1	30.4	1462	⚠	Caution! Expired ScreenTape device; The upper ribosomal fragment has degraded

Peak Table

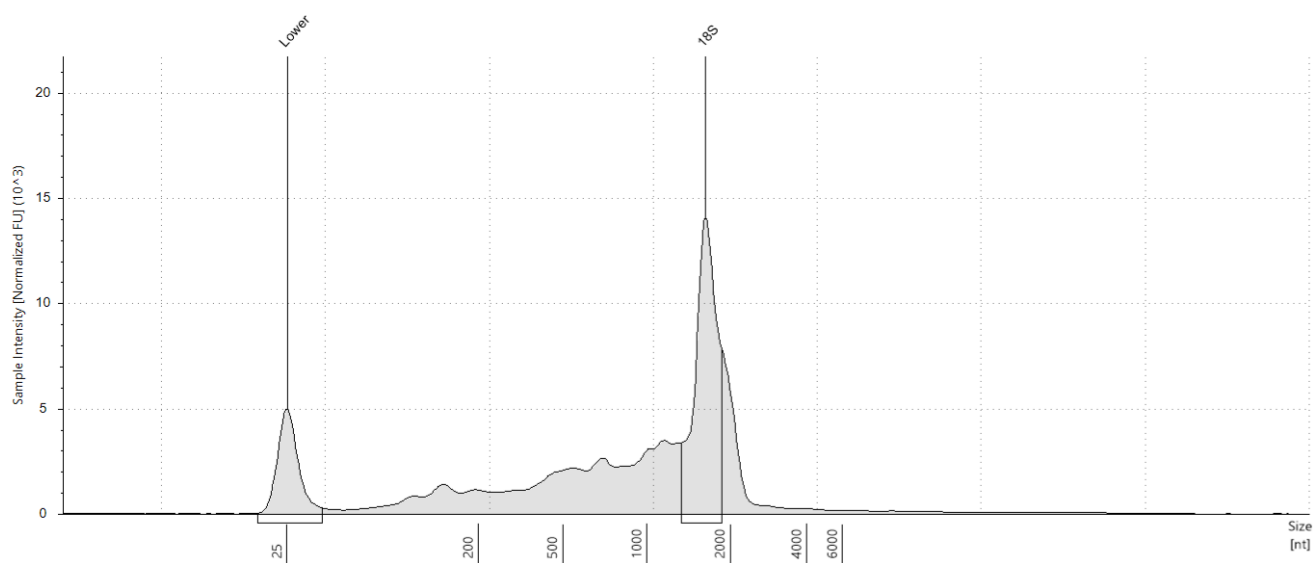
Size [nt]	Calibrated Conc. [ng/μl]	Assigned Conc. [ng/μl]	Peak Molarity [nmol/l]	% Integrated Area	Peak Comment	Observations
25	40.0	40.0	4710	-		Lower Marker
1759	15.3	-	25.6	91.71		18S
2957	1.39	-	1.38	8.29		28S

A2: 1557**Sample Table**

Well	RINe	28S/18S (Area)	Conc. [ng/μl]	Sample Description	Alert	Observations
A2	8.9	0.1	66.4	1557	⚠	Caution! Expired ScreenTape device; The upper ribosomal fragment has degraded

Peak Table

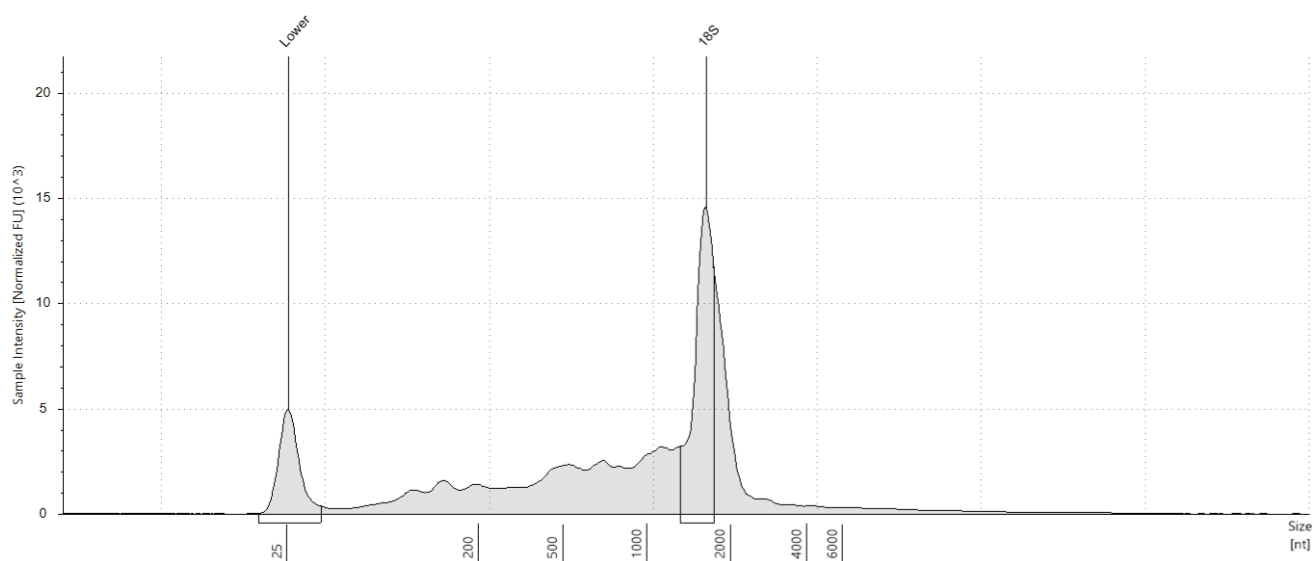
Size [nt]	Calibrated Conc. [ng/μl]	Assigned Conc. [ng/μl]	Peak Molarity [nmol/l]	% Integrated Area	Peak Comment	Observations
25	40.0	40.0	4710	-		Lower Marker
1687	34.1	-	59.5	94.79		18S
2847	1.88	-	1.94	5.21		28S

B2: 1455**Sample Table**

Well	RINe	28S/18S (Area)	Conc. [ng/μl]	Sample Description	Alert	Observations
B2	7.7	-	185	1455		Caution! Expired ScreenTape device; The upper ribosomal fragment has degraded

Peak Table

Size [nt]	Calibrated Conc. [ng/μl]	Assigned Conc. [ng/μl]	Peak Molarity [nmol/l]	% Integrated Area	Peak Comment	Observations
25	40.0	40.0	4710	-		Lower Marker
1622	63.5	-	115	100.00		18S

C2: 1572**Sample Table**

Well	RINe	28S/18S (Area)	Conc. [ng/μl]	Sample Description	Alert	Observations
C2	7.9	-	201	1572	⚠	Caution! Expired ScreenTape device; The upper ribosomal fragment has degraded

Peak Table

Size [nt]	Calibrated Conc. [ng/μl]	Assigned Conc. [ng/μl]	Peak Molarity [nmol/l]	% Integrated Area	Peak Comment	Observations
25	40.0	40.0	4710	-		Lower Marker
1627	56.0	-	101	100.00		18S