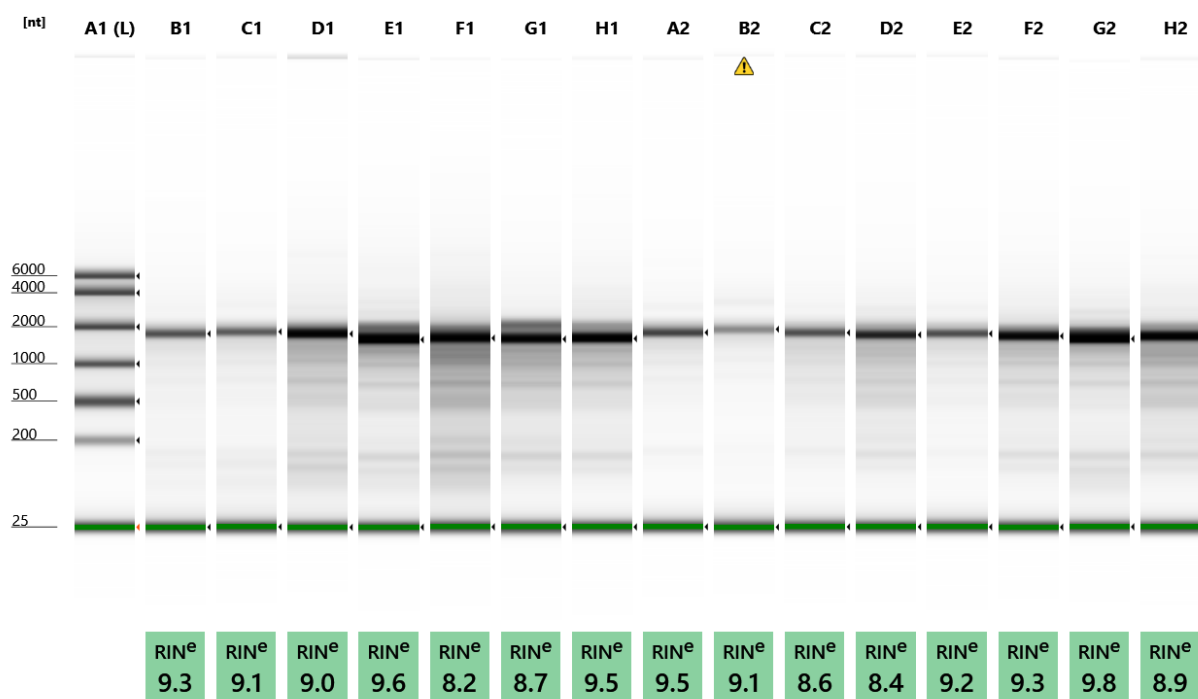


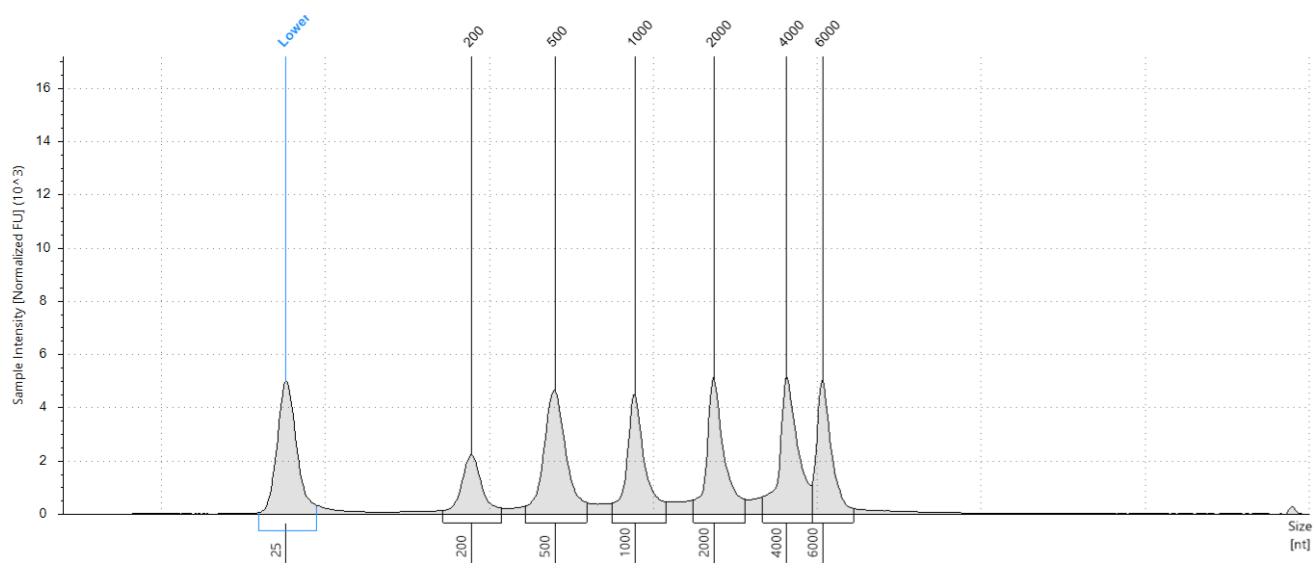
Filename: 2020-09-09 - 16.56.21.RNA



Default image (Contrast 100%)

## Sample Info

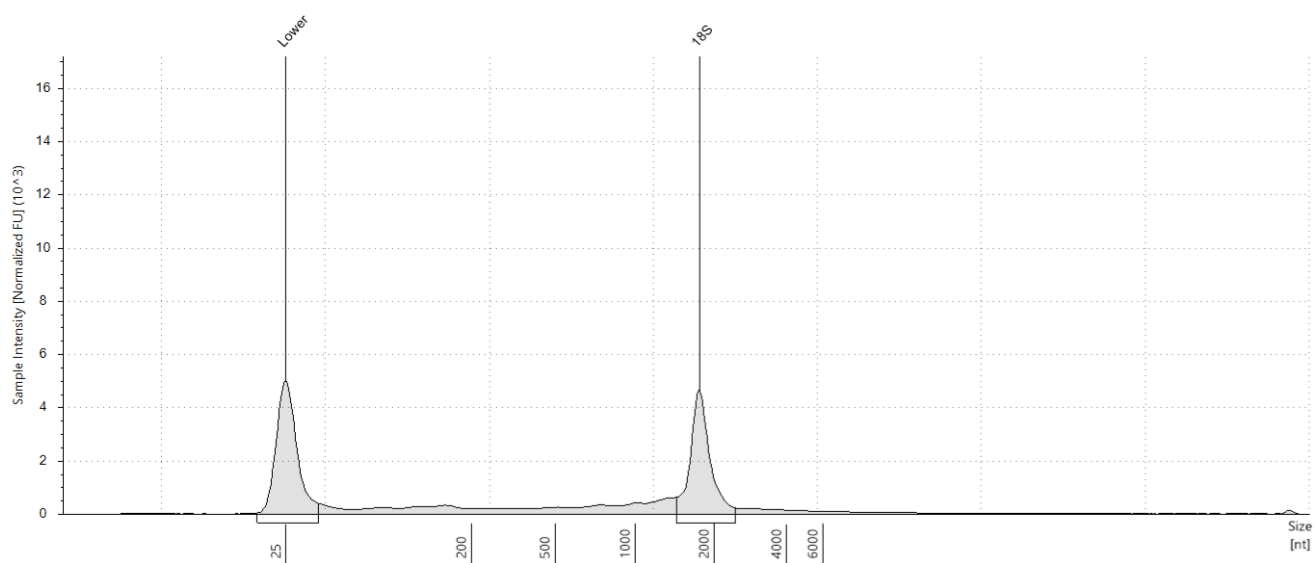
Well	RINe	28S/18S (Area)	Conc. [ng/μl]	Sample Description	Alert	Observations
A1	-	-	124	Ladder		Ladder
B1	9.3	-	42.1	793		The upper ribosomal fragment has degraded
C1	9.1	-	38.0	1524		The upper ribosomal fragment has degraded
D1	9.0	-	112	1534		The upper ribosomal fragment has degraded
E1	9.6	-	126	1449		The upper ribosomal fragment has degraded
F1	8.2	-	146	1446		The upper ribosomal fragment has degraded
G1	8.7	-	108	22		The upper ribosomal fragment has degraded
H1	9.5	-	103	18		The upper ribosomal fragment has degraded
A2	9.5	-	38.5	331		The upper ribosomal fragment has degraded
B2	9.1	-	24.9	339	⚠	Sample concentration outside functional range for RINe and the assay; The upper ribosomal fragment has degraded
C2	8.6	-	44.2	789		The upper ribosomal fragment has degraded
D2	8.4	-	75.8	837		The upper ribosomal fragment has degraded
E2	9.2	-	38.1	722		The upper ribosomal fragment has degraded
F2	9.3	-	83.6	1615		The upper ribosomal fragment has degraded
G2	9.8	-	110	355		The upper ribosomal fragment has degraded
H2	8.9	-	104	1512		The upper ribosomal fragment has degraded

**A1: Ladder****Sample Table**

Well	RINe	28S/18S (Area)	Conc. [ng/μl]	Sample Description	Alert	Observations
A1	-	-	124	Ladder		Ladder

**Peak Table**

Size [nt]	Calibrated Conc. [ng/μl]	Assigned Conc. [ng/μl]	Peak Molarity [nmol/l]	% Integrated Area	Peak Comment	Observations
25	40.0	40.0	4710	-		Lower Marker
200	10.5	-	154	9.36		
500	23.9	-	141	21.34		
1000	18.1	-	53.4	16.20		
2000	20.2	-	29.7	18.03		
4000	22.0	-	16.2	19.66		
6000	17.3	-	8.46	15.41		

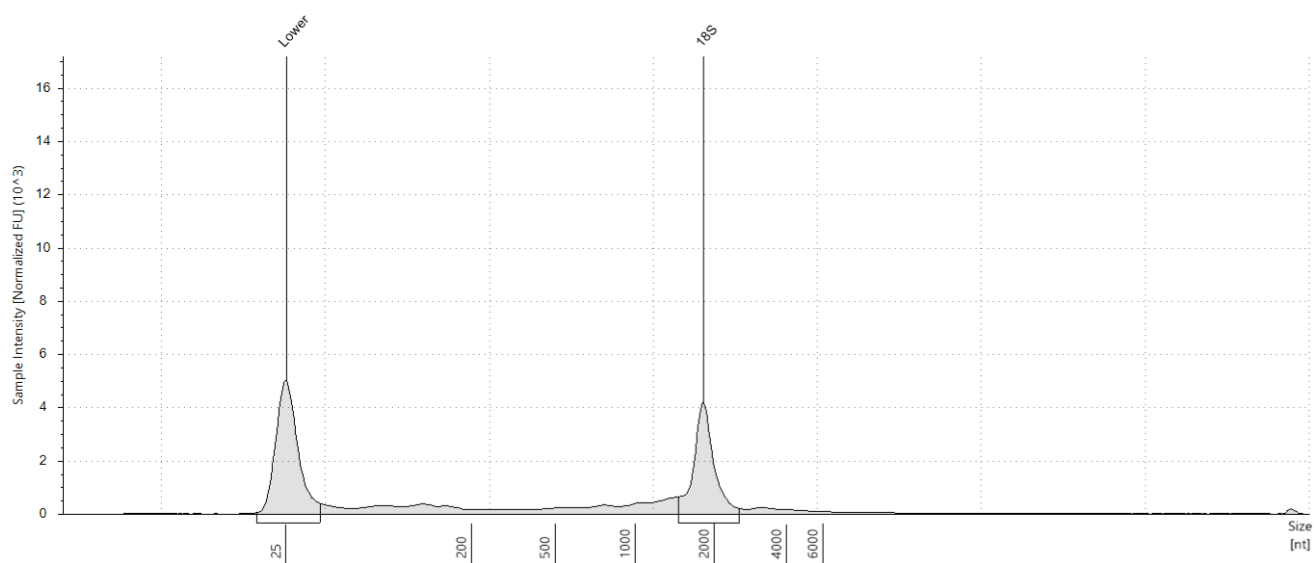
**B1: 793****Sample Table**

Well	RINe	28S/18S (Area)	Conc. [ng/μl]	Sample Description	Alert	Observations
B1	9.3	-	42.1	793		The upper ribosomal fragment has degraded

**Peak Table**

Size [nt]	Calibrated Conc. [ng/μl]	Assigned Conc. [ng/μl]	Peak Molarity [nmol/l]	% Integrated Area	Peak Comment	Observations
25	40.0	40.0	4710	-		Lower Marker
1753	19.6	-	32.9	100.00		18S

## C1: 1524

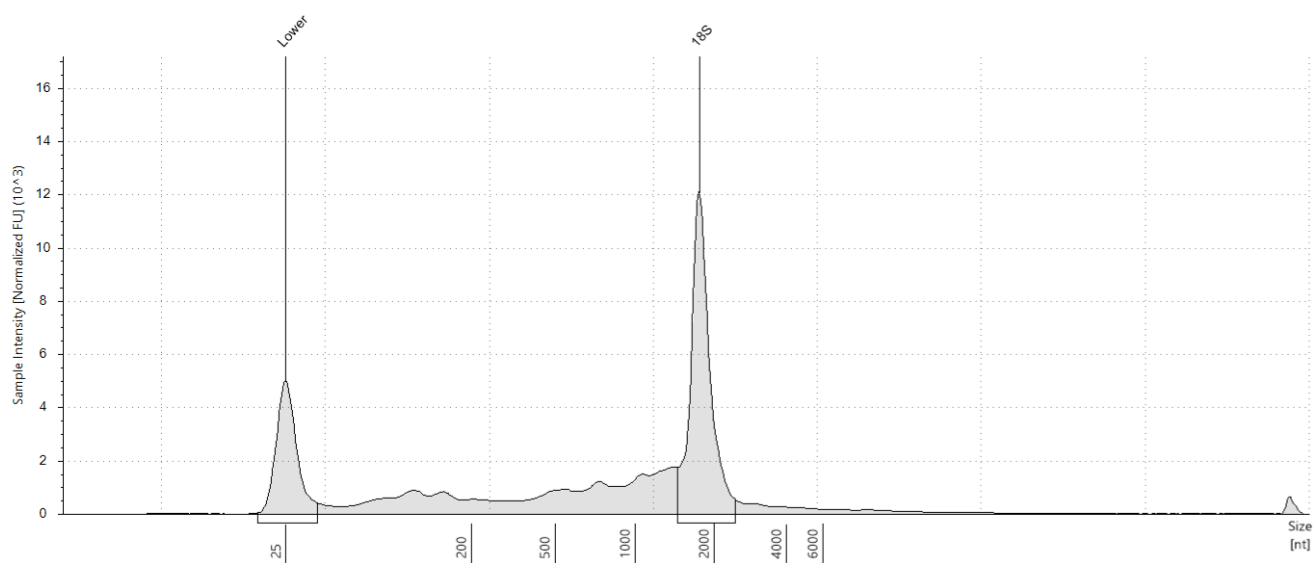


## Sample Table

Well	RINe	28S/18S (Area)	Conc. [ng/μl]	Sample Description	Alert	Observations
C1	9.1	-	38.0	1524		The upper ribosomal fragment has degraded

## Peak Table

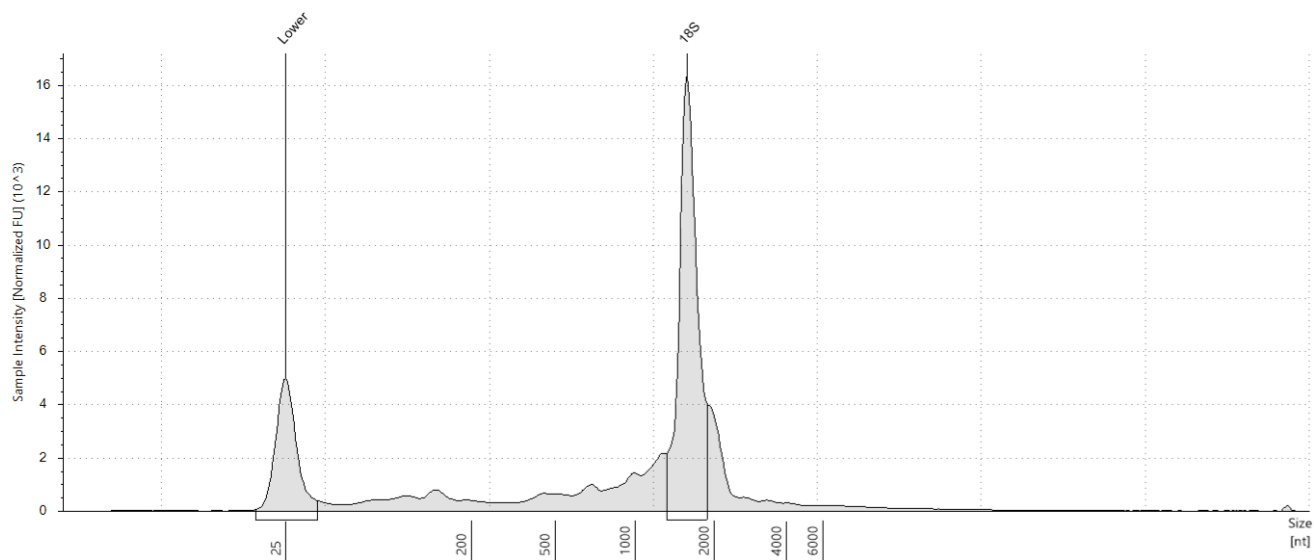
Size [nt]	Calibrated Conc. [ng/μl]	Assigned Conc. [ng/μl]	Peak Molarity [nmol/l]	% Integrated Area	Peak Comment	Observations
25	40.0	40.0	4710	-		Lower Marker
1816	17.1	-	27.7	100.00		18S

**D1: 1534****Sample Table**

Well	RINe	28S/18S (Area)	Conc. [ng/μl]	Sample Description	Alert	Observations
D1	9.0	-	112	1534		The upper ribosomal fragment has degraded

**Peak Table**

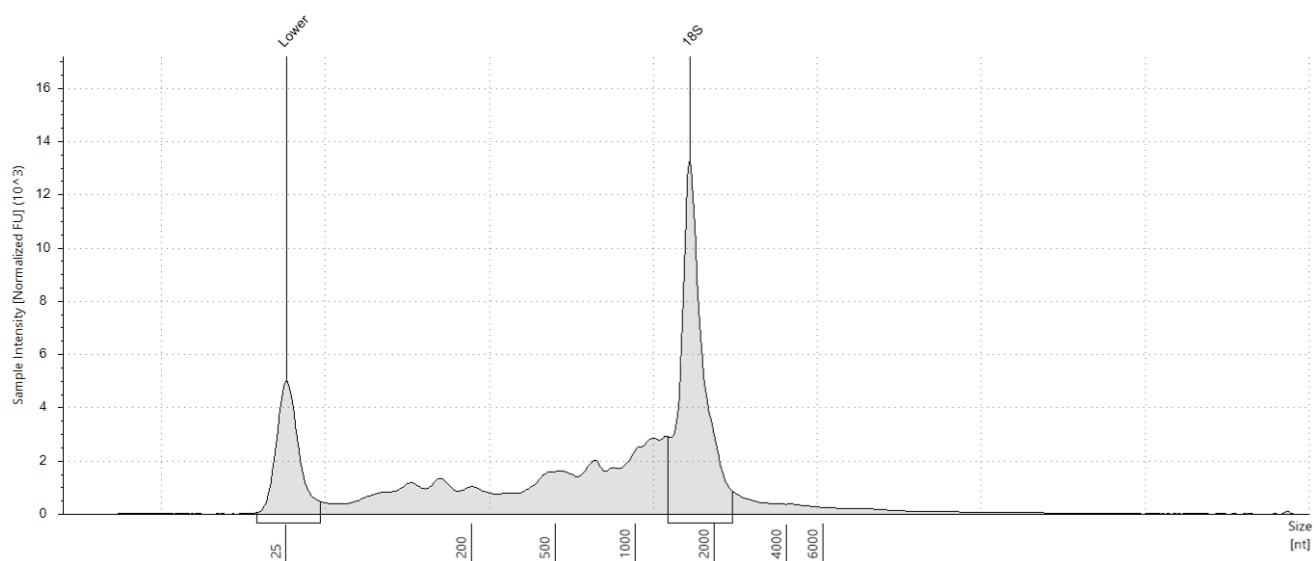
Size [nt]	Calibrated Conc. [ng/μl]	Assigned Conc. [ng/μl]	Peak Molarity [nmol/l]	% Integrated Area	Peak Comment	Observations
25	40.0	40.0	4710	-		Lower Marker
1757	50.4	-	84.4	100.00		18S

**E1: 1449****Sample Table**

Well	RINe	28S/18S (Area)	Conc. [ng/μl]	Sample Description	Alert	Observations
E1	9.6	-	126	1449		The upper ribosomal fragment has degraded

**Peak Table**

Size [nt]	Calibrated Conc. [ng/μl]	Assigned Conc. [ng/μl]	Peak Molarity [nmol/l]	% Integrated Area	Peak Comment	Observations
25	40.0	40.0	4710	-		Lower Marker
1569	63.3	-	119	100.00		18S

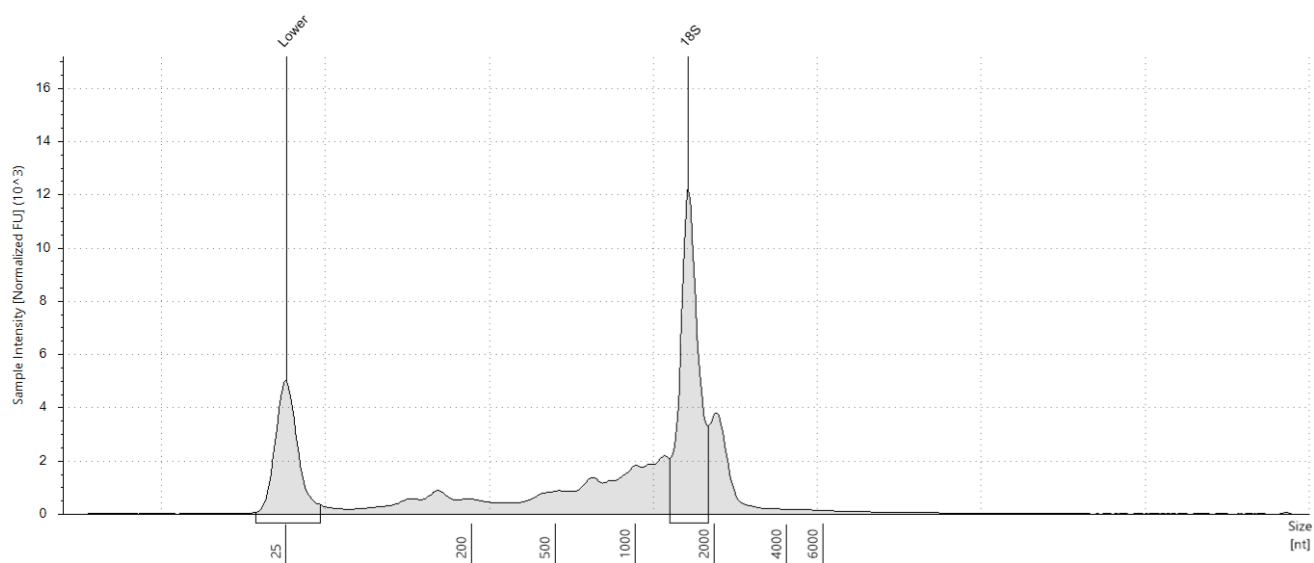
**F1: 1446****Sample Table**

Well	RINe	28S/18S (Area)	Conc. [ng/μl]	Sample Description	Alert	Observations
F1	8.2	-	146	1446		The upper ribosomal fragment has degraded

**Peak Table**

Size [nt]	Calibrated Conc. [ng/μl]	Assigned Conc. [ng/μl]	Peak Molarity [nmol/l]	% Integrated Area	Peak Comment	Observations
25	40.0	40.0	4710	-		Lower Marker
1614	59.9	-	109	100.00		18S

## G1: 22



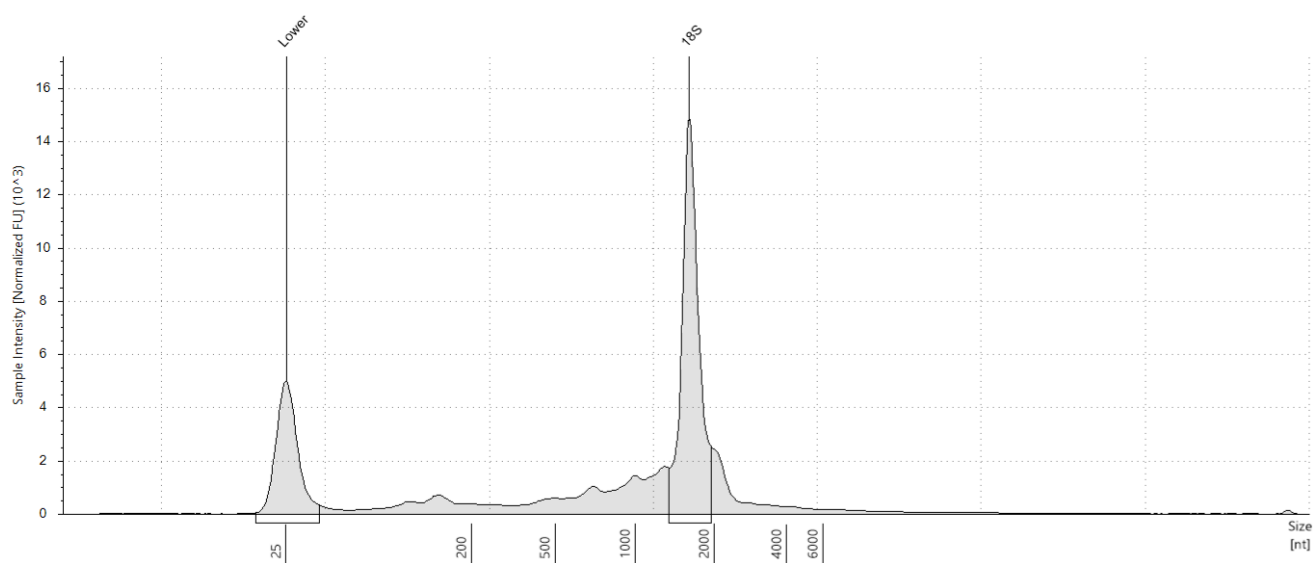
## Sample Table

Well	RINe	28S/18S (Area)	Conc. [ng/μl]	Sample Description	Alert	Observations
G1	8.7	-	108	22		The upper ribosomal fragment has degraded

## Peak Table

Size [nt]	Calibrated Conc. [ng/μl]	Assigned Conc. [ng/μl]	Peak Molarity [nmol/l]	% Integrated Area	Peak Comment	Observations
25	40.0	40.0	4710	-		Lower Marker
1581	43.8	-	81.5	100.00		18S



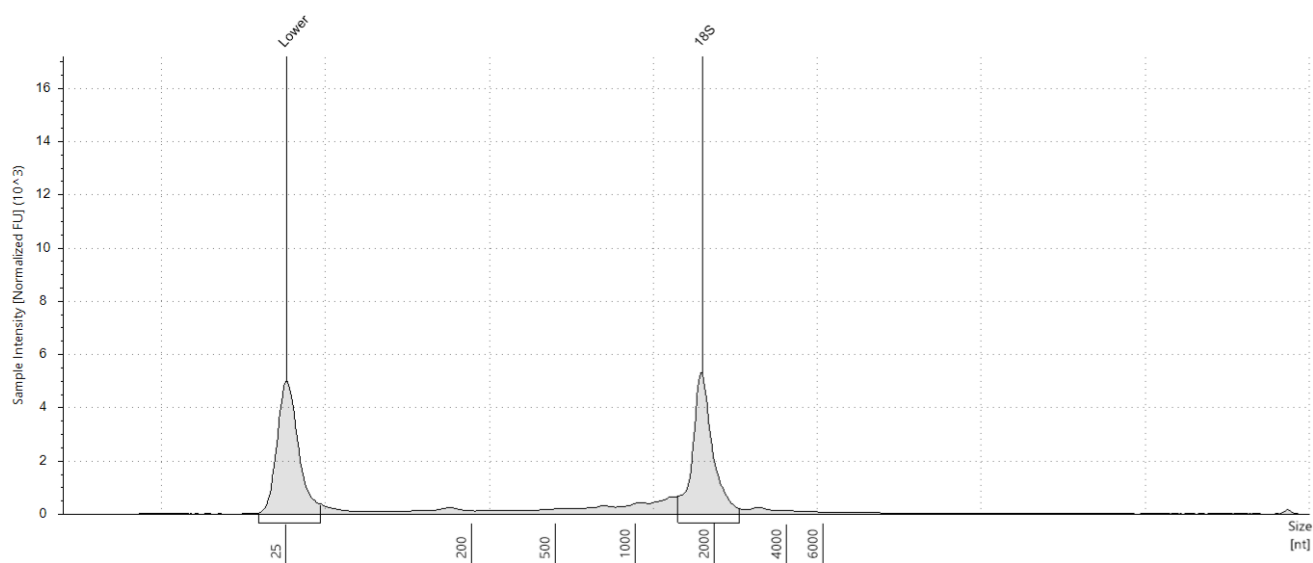
**H1: 18****Sample Table**

Well	RINe	28S/18S (Area)	Conc. [ng/μl]	Sample Description	Alert	Observations
H1	9.5	-	103	18		The upper ribosomal fragment has degraded

**Peak Table**

Size [nt]	Calibrated Conc. [ng/μl]	Assigned Conc. [ng/μl]	Peak Molarity [nmol/l]	% Integrated Area	Peak Comment	Observations
25	40.0	40.0	4710	-		Lower Marker
1599	51.8	-	95.4	100.00		18S

## A2: 331

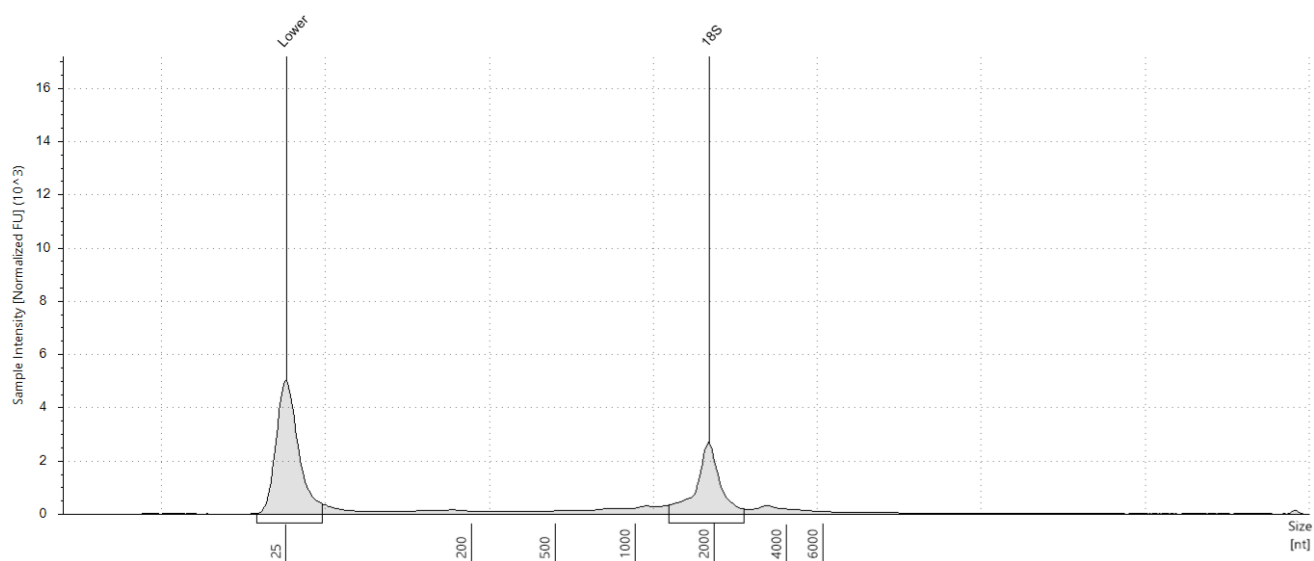


## Sample Table

Well	RINe	28S/18S (Area)	Conc. [ng/μl]	Sample Description	Alert	Observations
A2	9.5	-	38.5	331		The upper ribosomal fragment has degraded

## Peak Table

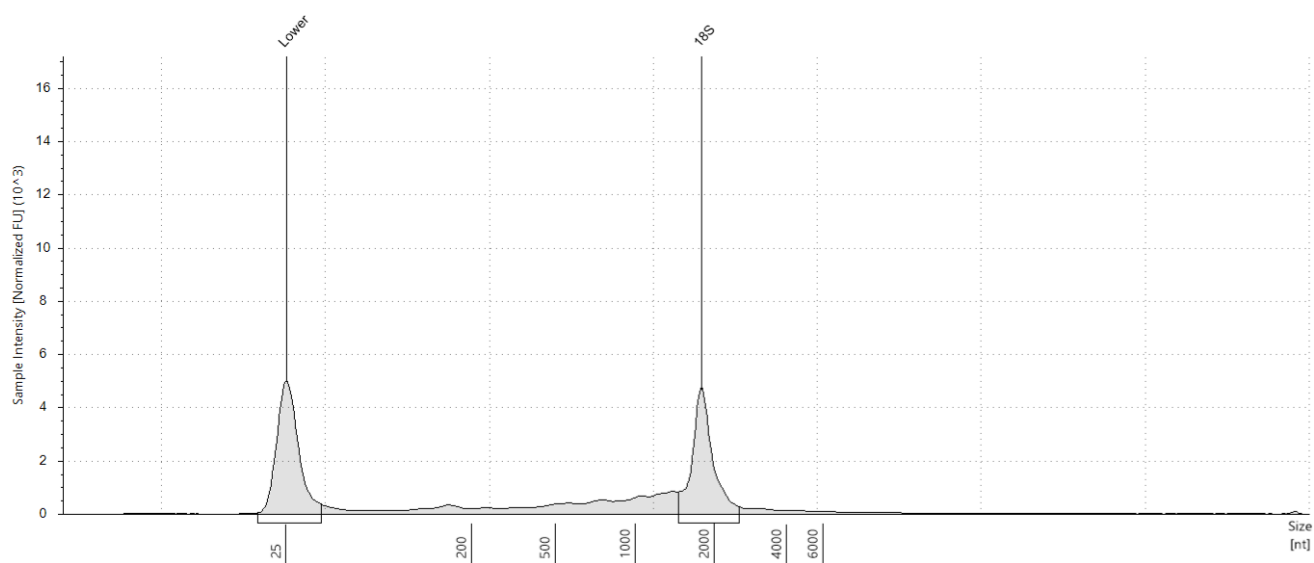
Size [nt]	Calibrated Conc. [ng/μl]	Assigned Conc. [ng/μl]	Peak Molarity [nmol/l]	% Integrated Area	Peak Comment	Observations
25	40.0	40.0	4710	-		Lower Marker
1786	22.1	-	36.4	100.00		18S

**B2: 339****Sample Table**

Well	RINe	28S/18S (Area)	Conc. [ng/μl]	Sample Description	Alert	Observations
B2	9.1	-	24.9	339	⚠	Sample concentration outside functional range for RINe and the assay; The upper ribosomal fragment has degraded

**Peak Table**

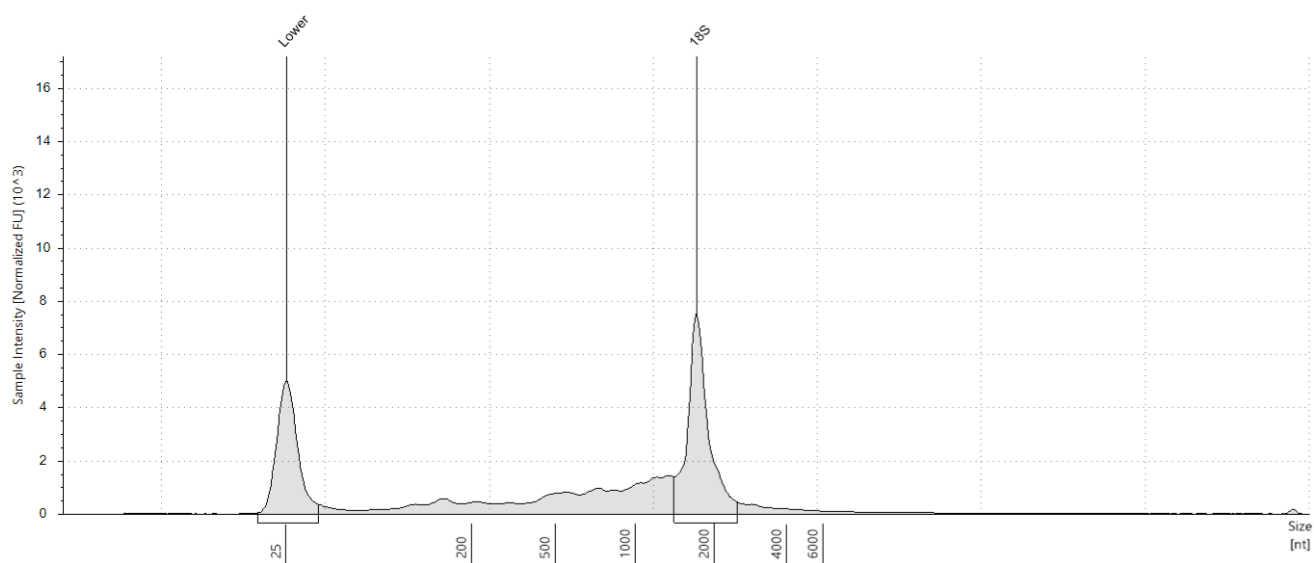
Size [nt]	Calibrated Conc. [ng/μl]	Assigned Conc. [ng/μl]	Peak Molarity [nmol/l]	% Integrated Area	Peak Comment	Observations
25	40.0	40.0	4710	-		Lower Marker
1908	12.6	-	19.4	100.00		18S

**C2: 789****Sample Table**

Well	RINe	28S/18S (Area)	Conc. [ng/μl]	Sample Description	Alert	Observations
C2	8.6	-	44.2	789		The upper ribosomal fragment has degraded

**Peak Table**

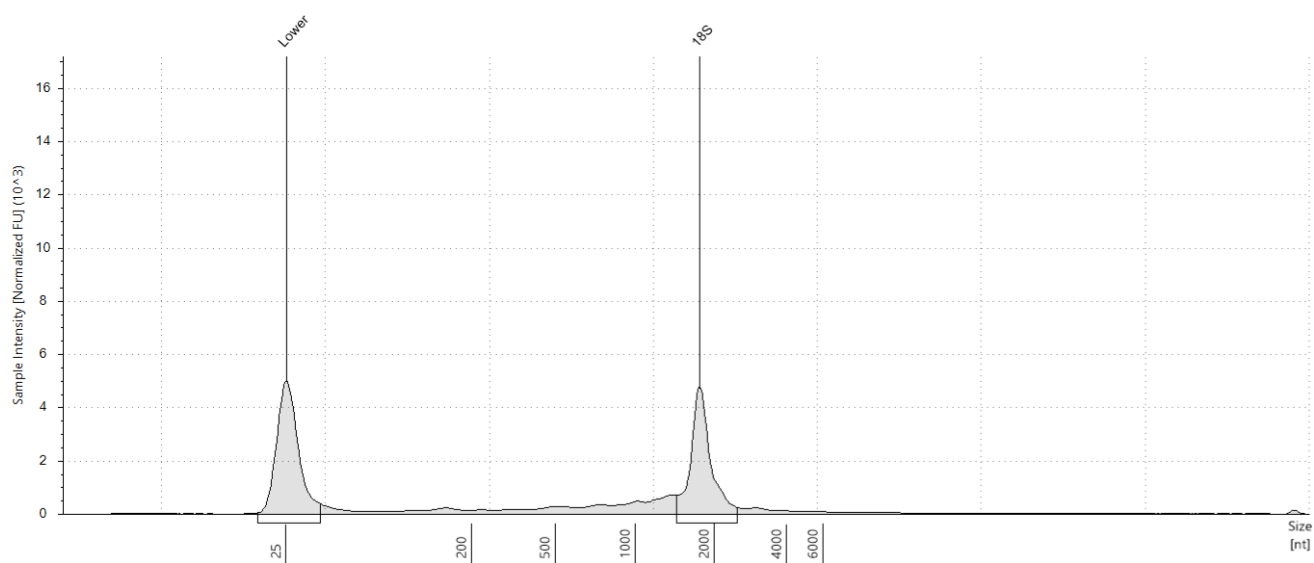
Size [nt]	Calibrated Conc. [ng/μl]	Assigned Conc. [ng/μl]	Peak Molarity [nmol/l]	% Integrated Area	Peak Comment	Observations
25	40.0	40.0	4710	-		Lower Marker
1781	20.0	-	33.0	100.00		18S

**D2: 837****Sample Table**

Well	RINe	28S/18S (Area)	Conc. [ng/μl]	Sample Description	Alert	Observations
D2	8.4	-	75.8	837		The upper ribosomal fragment has degraded

**Peak Table**

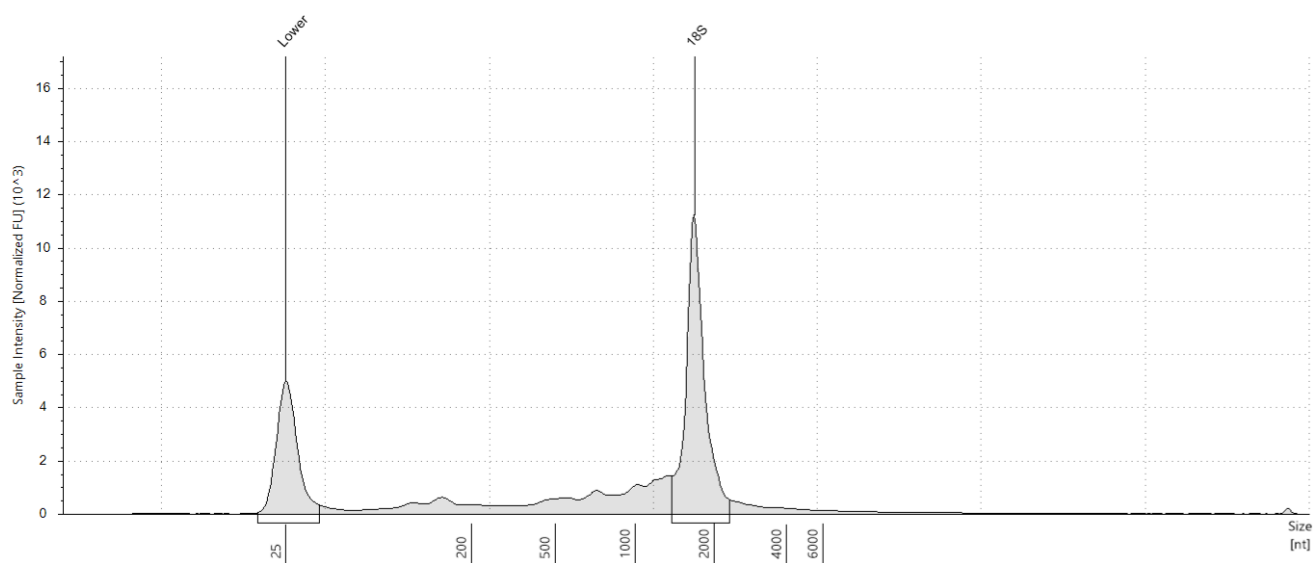
Size [nt]	Calibrated Conc. [ng/μl]	Assigned Conc. [ng/μl]	Peak Molarity [nmol/l]	% Integrated Area	Peak Comment	Observations
25	40.0	40.0	4710	-		Lower Marker
1713	33.3	-	57.1	100.00		18S

**E2: 722****Sample Table**

Well	RINe	28S/18S (Area)	Conc. [ng/μl]	Sample Description	Alert	Observations
E2	9.2	-	38.1	722		The upper ribosomal fragment has degraded

**Peak Table**

Size [nt]	Calibrated Conc. [ng/μl]	Assigned Conc. [ng/μl]	Peak Molarity [nmol/l]	% Integrated Area	Peak Comment	Observations
25	40.0	40.0	4710	-		Lower Marker
1753	19.5	-	32.7	100.00		18S

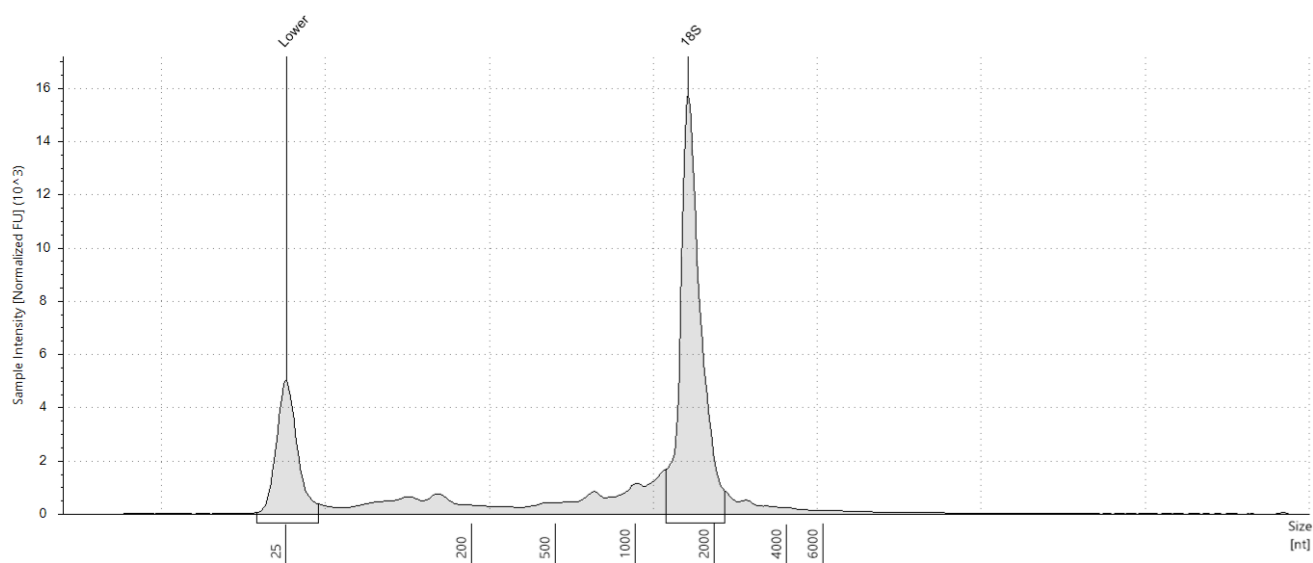
**F2: 1615****Sample Table**

Well	RINe	28S/18S (Area)	Conc. [ng/μl]	Sample Description	Alert	Observations
F2	9.3	-	83.6	1615		The upper ribosomal fragment has degraded

**Peak Table**

Size [nt]	Calibrated Conc. [ng/μl]	Assigned Conc. [ng/μl]	Peak Molarity [nmol/l]	% Integrated Area	Peak Comment	Observations
25	40.0	40.0	4710	-		Lower Marker
1682	44.3	-	77.5	100.00		18S

## G2: 355



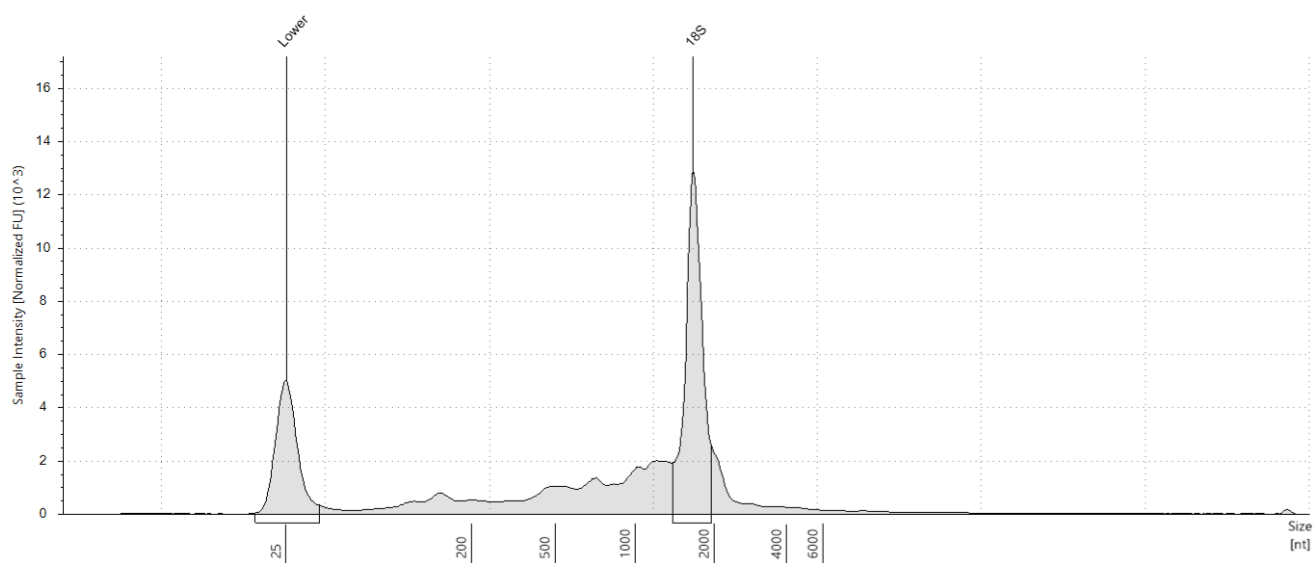
## Sample Table

Well	RINe	28S/18S (Area)	Conc. [ng/μl]	Sample Description	Alert	Observations
G2	9.8	-	110	355		The upper ribosomal fragment has degraded

## Peak Table

Size [nt]	Calibrated Conc. [ng/μl]	Assigned Conc. [ng/μl]	Peak Molarity [nmol/l]	% Integrated Area	Peak Comment	Observations
25	40.0	40.0	4710	-		Lower Marker
1585	67.7	-	126	100.00		18S



**H2: 1512****Sample Table**

Well	RINe	28S/18S (Area)	Conc. [ng/μl]	Sample Description	Alert	Observations
H2	8.9	-	104	1512		The upper ribosomal fragment has degraded

**Peak Table**

Size [nt]	Calibrated Conc. [ng/μl]	Assigned Conc. [ng/μl]	Peak Molarity [nmol/l]	% Integrated Area	Peak Comment	Observations
25	40.0	40.0	4710	-		Lower Marker
1660	44.5	-	78.8	100.00		18S