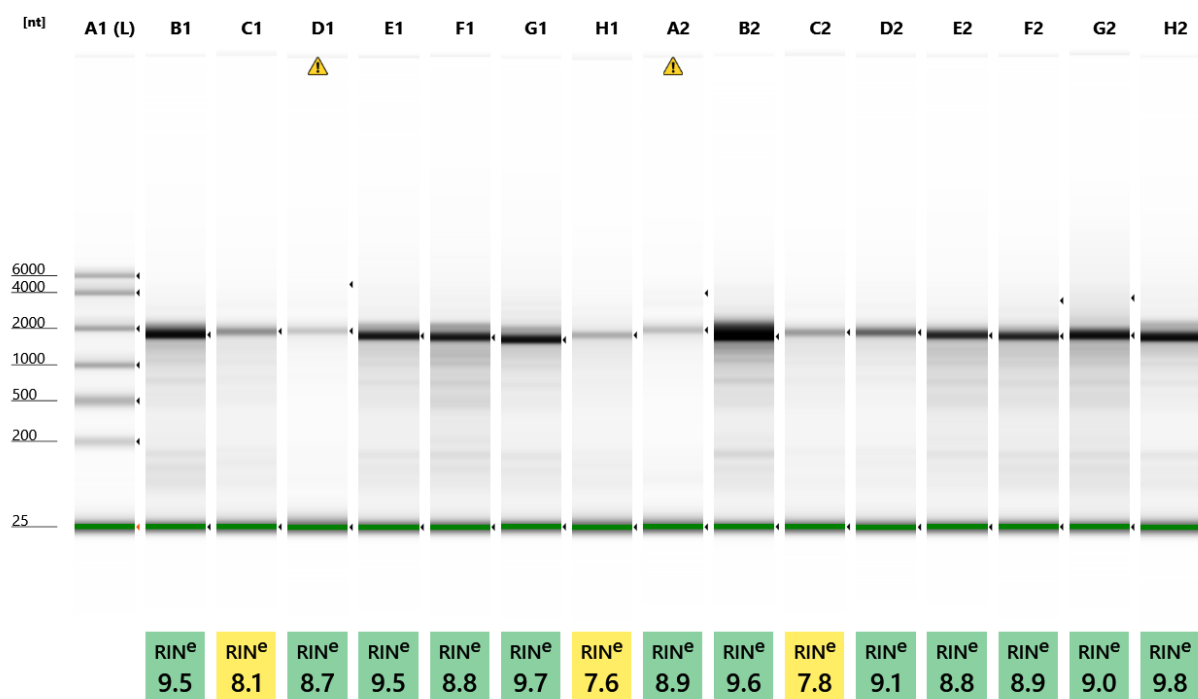


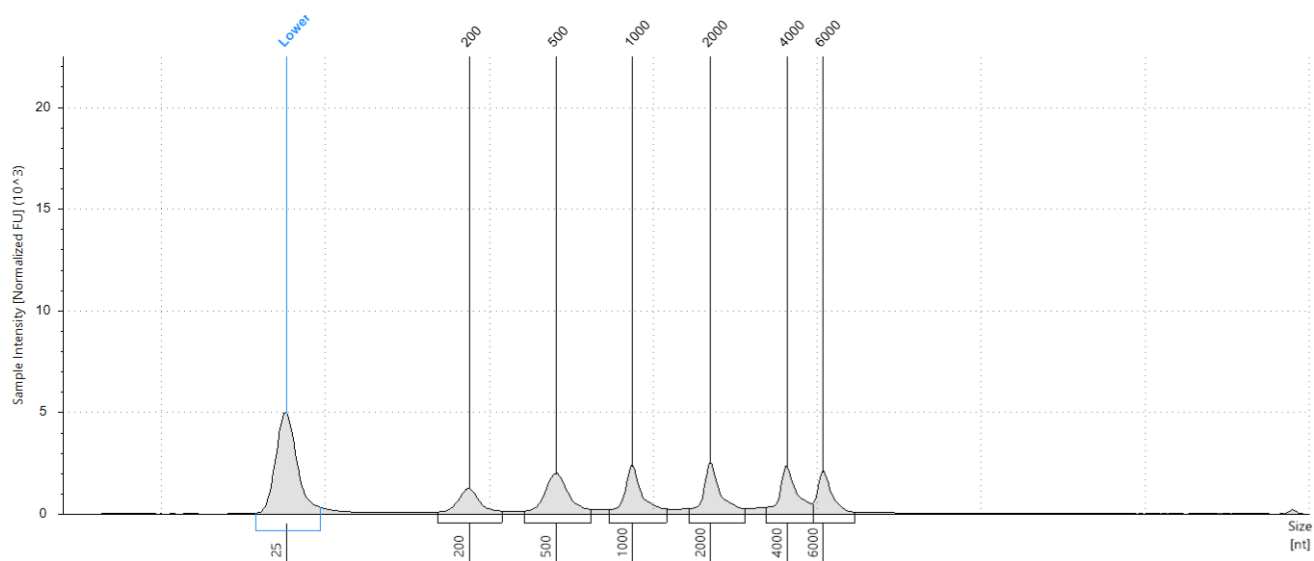
## Filename: 2020-09-17 - 16.44.13.RNA



Default image (Contrast 100%)

## Sample Info

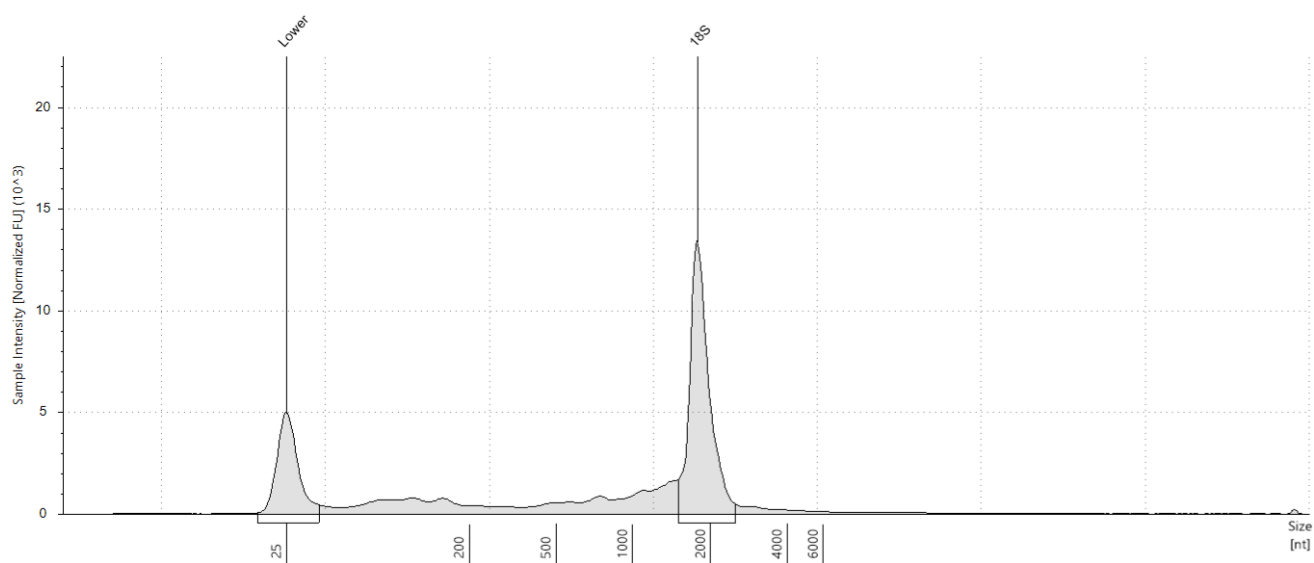
Well	RIN <sup>e</sup>	28S/18S (Area)	Conc. [ng/μl]	Sample Description	Alert	Observations
A1	-	-	56.7	Ladder		Ladder
B1	9.5	-	106	841		The upper ribosomal fragment has degraded
C1	8.1	-	42.5	766		The upper ribosomal fragment has degraded
D1	8.7	0.1	15.7	1603	⚠	Sample concentration outside functional range for RIN <sup>e</sup> and the assay; The upper ribosomal fragment has degraded
E1	9.5	-	85.9	1506		The upper ribosomal fragment has degraded
F1	8.8	-	102	1482		The upper ribosomal fragment has degraded
G1	9.7	-	90.5	1515		The upper ribosomal fragment has degraded
H1	7.6	-	31.2	1627		The upper ribosomal fragment has degraded
A2	8.9	0.1	19.9	1495	⚠	Sample concentration outside functional range for RIN <sup>e</sup> and the assay; The upper ribosomal fragment has degraded
B2	9.6	-	171	1539		The upper ribosomal fragment has degraded
C2	7.8	-	37.3	763		The upper ribosomal fragment has degraded
D2	9.1	-	46.7	1		The upper ribosomal fragment has degraded
E2	8.8	-	84.6	741		The upper ribosomal fragment has degraded
F2	8.9	0.1	82.7	1440		The upper ribosomal fragment has degraded
G2	9.0	0.1	115	1504		The upper ribosomal fragment has degraded
H2	9.8	-	83.7	1554		The upper ribosomal fragment has degraded

**A1: Ladder****Sample Table**

Well	RINe	28S/18S (Area)	Conc. [ng/μl]	Sample Description	Alert	Observations
A1	-	-	56.7	Ladder		Ladder

**Peak Table**

Size [nt]	Calibrated Conc. [ng/μl]	Assigned Conc. [ng/μl]	Peak Molarity [nmol/l]	% Integrated Area	Peak Comment	Observations
25	40.0	40.0	4710	-		Lower Marker
200	6.08	-	89.4	12.14		
500	10.4	-	61.1	20.74		
1000	8.94	-	26.3	17.85		
2000	9.27	-	13.6	18.51		
4000	8.84	-	6.50	17.65		
6000	6.57	-	3.22	13.11		

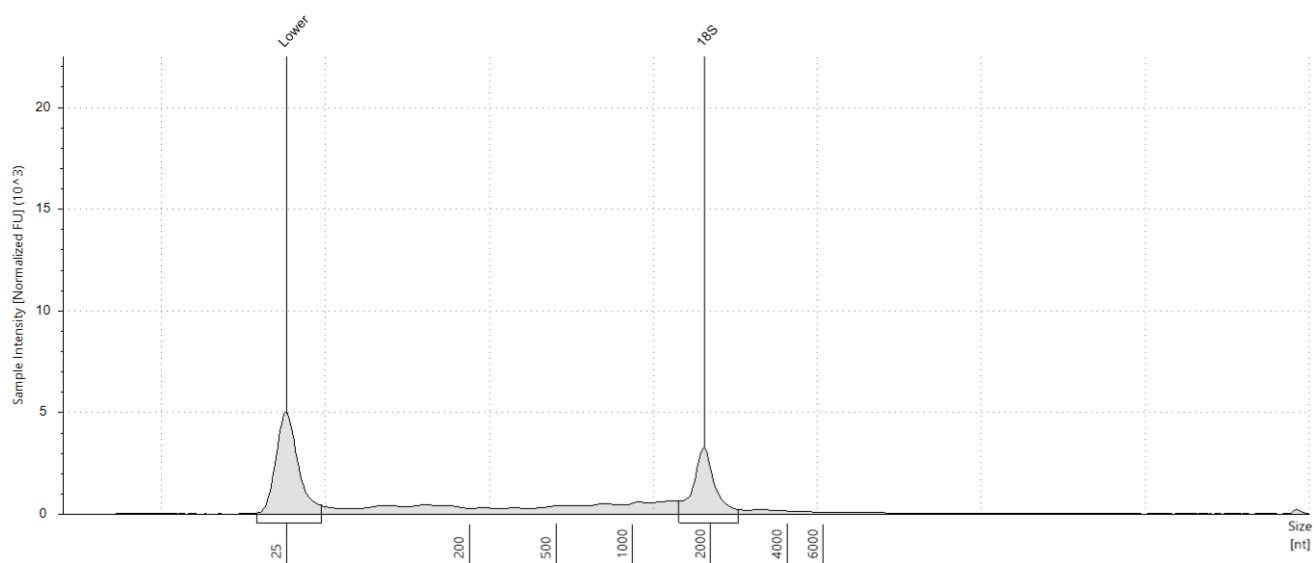
**B1: 841****Sample Table**

Well	RINe	28S/18S (Area)	Conc. [ng/μl]	Sample Description	Alert	Observations
B1	9.5	-	106	841		The upper ribosomal fragment has degraded

**Peak Table**

Size [nt]	Calibrated Conc. [ng/μl]	Assigned Conc. [ng/μl]	Peak Molarity [nmol/l]	% Integrated Area	Peak Comment	Observations
25	40.0	40.0	4710	-		Lower Marker
1785	57.0	-	93.9	100.00		18S

## C1: 766

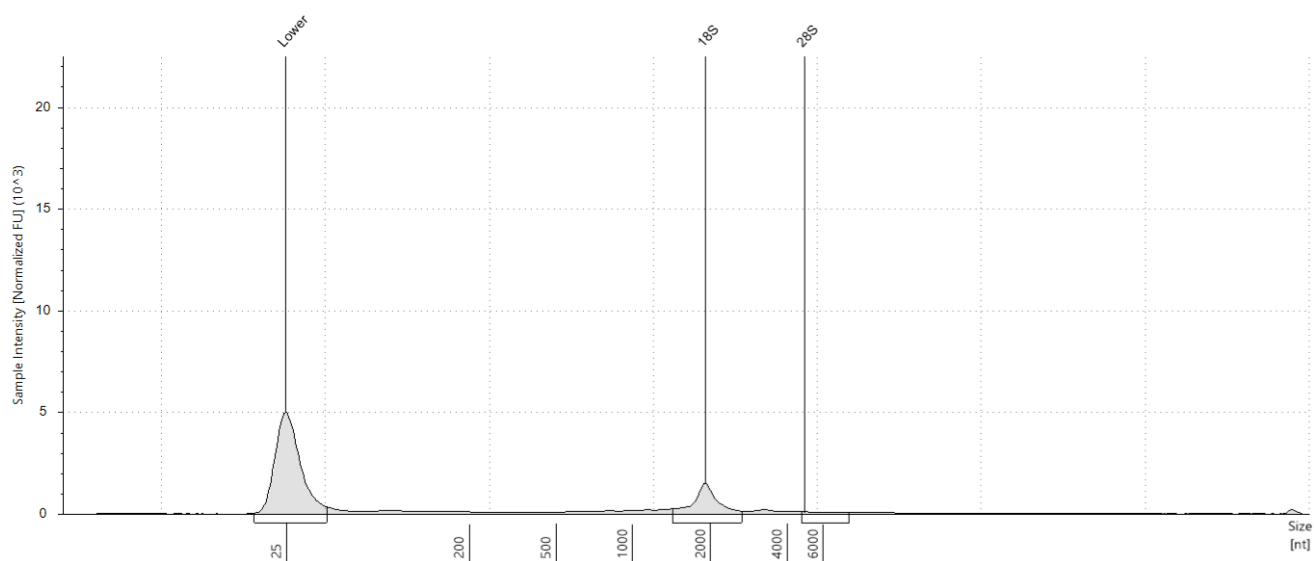


## Sample Table

Well	RINe	28S/18S (Area)	Conc. [ng/μl]	Sample Description	Alert	Observations
C1	8.1	-	42.5	766		The upper ribosomal fragment has degraded

## Peak Table

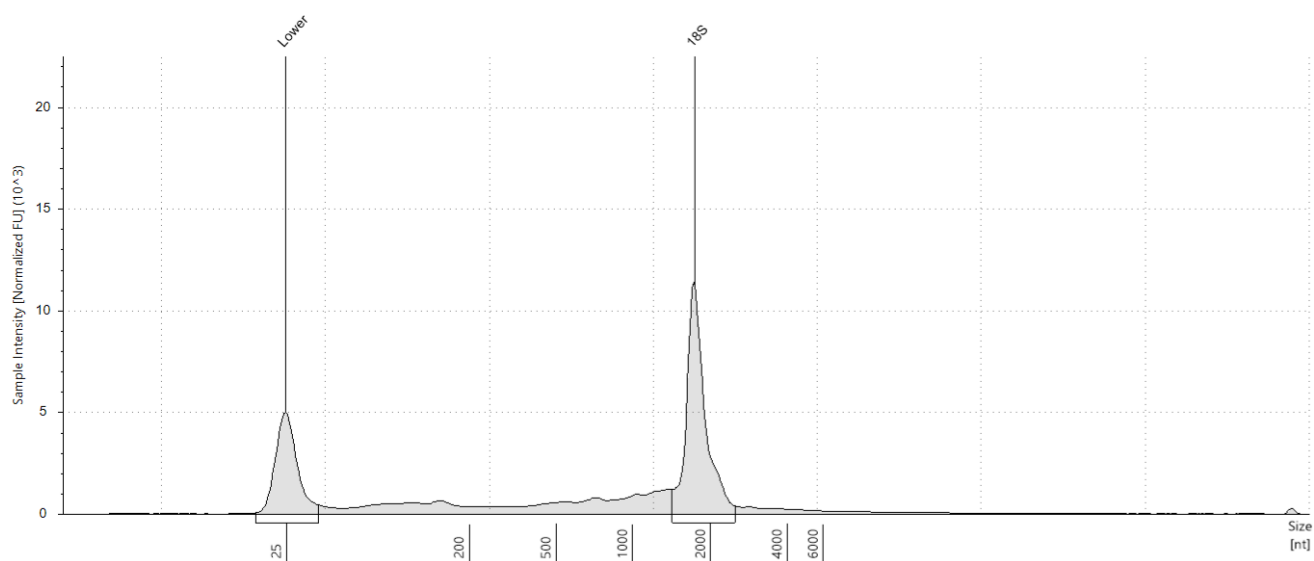
Size [nt]	Calibrated Conc. [ng/μl]	Assigned Conc. [ng/μl]	Peak Molarity [nmol/l]	% Integrated Area	Peak Comment	Observations
25	40.0	40.0	4710	-		Lower Marker
1902	14.0	-	21.7	100.00		18S

**D1: 1603****Sample Table**

Well	RINe	28S/18S (Area)	Conc. [ng/μl]	Sample Description	Alert	Observations
D1	8.7	0.1	15.7	1603	⚠	Sample concentration outside functional range for RINe and the assay; The upper ribosomal fragment has degraded

**Peak Table**

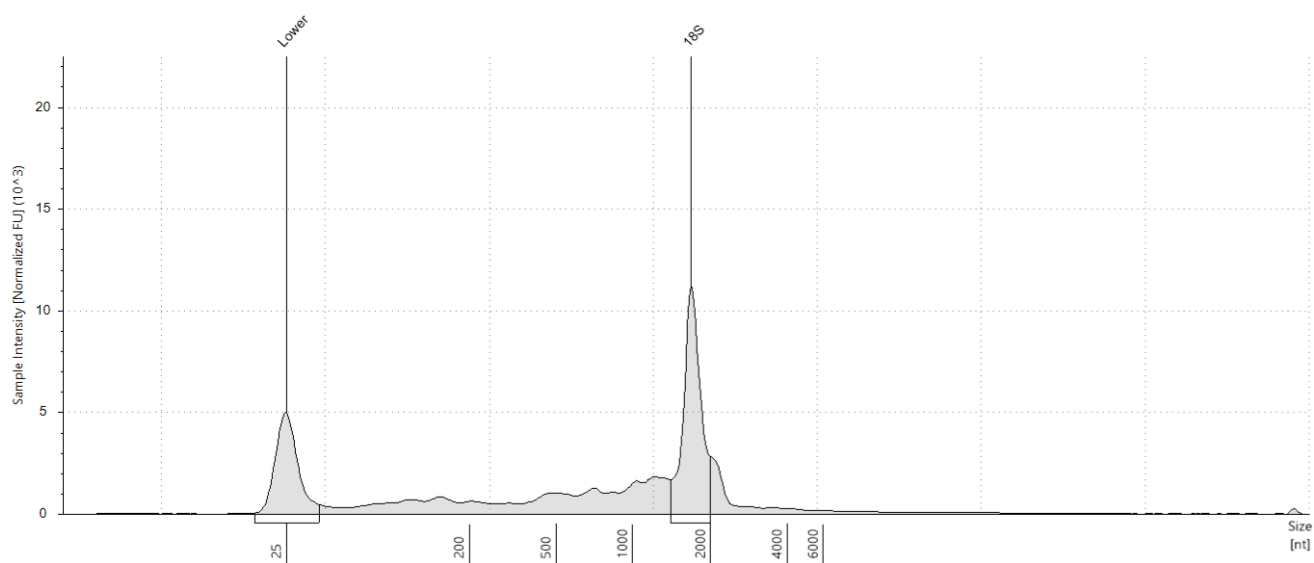
Size [nt]	Calibrated Conc. [ng/μl]	Assigned Conc. [ng/μl]	Peak Molarity [nmol/l]	% Integrated Area	Peak Comment	Observations
25	40.0	40.0	4710	-		Lower Marker
1924	6.12	-	9.35	92.19		18S
4923	0.518	-	0.309	7.81		28S

**E1: 1506****Sample Table**

Well	RINe	28S/18S (Area)	Conc. [ng/μl]	Sample Description	Alert	Observations
E1	9.5	-	85.9	1506		The upper ribosomal fragment has degraded

**Peak Table**

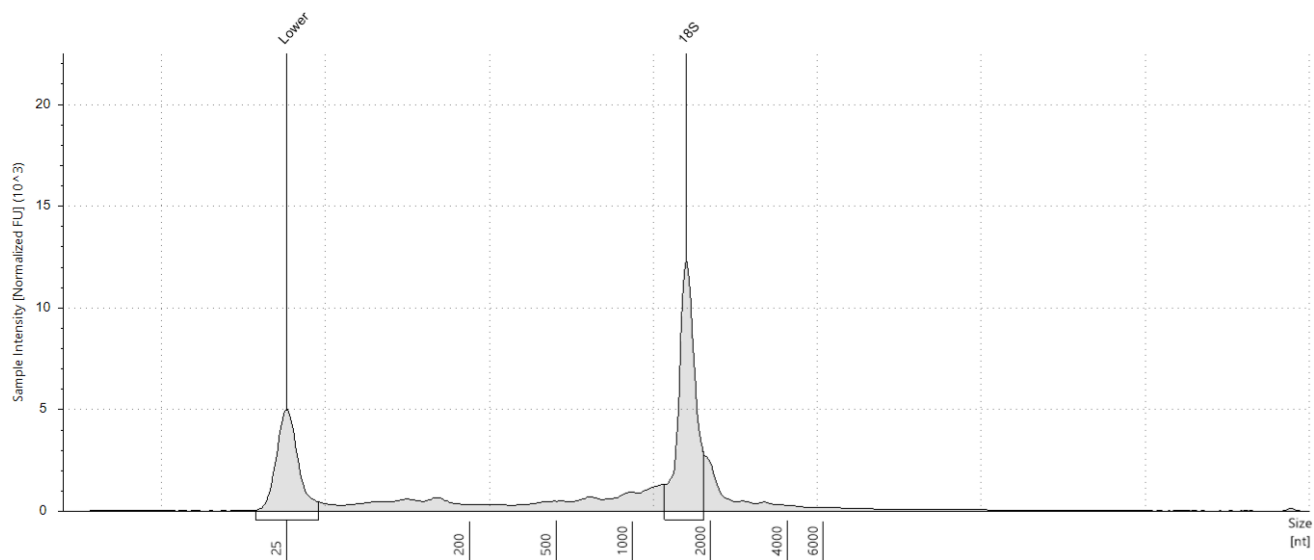
Size [nt]	Calibrated Conc. [ng/μl]	Assigned Conc. [ng/μl]	Peak Molarity [nmol/l]	% Integrated Area	Peak Comment	Observations
25	40.0	40.0	4710	-		Lower Marker
1745	44.7	-	75.4	100.00		18S

**F1: 1482****Sample Table**

Well	RINe	28S/18S (Area)	Conc. [ng/μl]	Sample Description	Alert	Observations
F1	8.8	-	102	1482		The upper ribosomal fragment has degraded

**Peak Table**

Size [nt]	Calibrated Conc. [ng/μl]	Assigned Conc. [ng/μl]	Peak Molarity [nmol/l]	% Integrated Area	Peak Comment	Observations
25	40.0	40.0	4710	-		Lower Marker
1694	39.4	-	68.5	100.00		18S

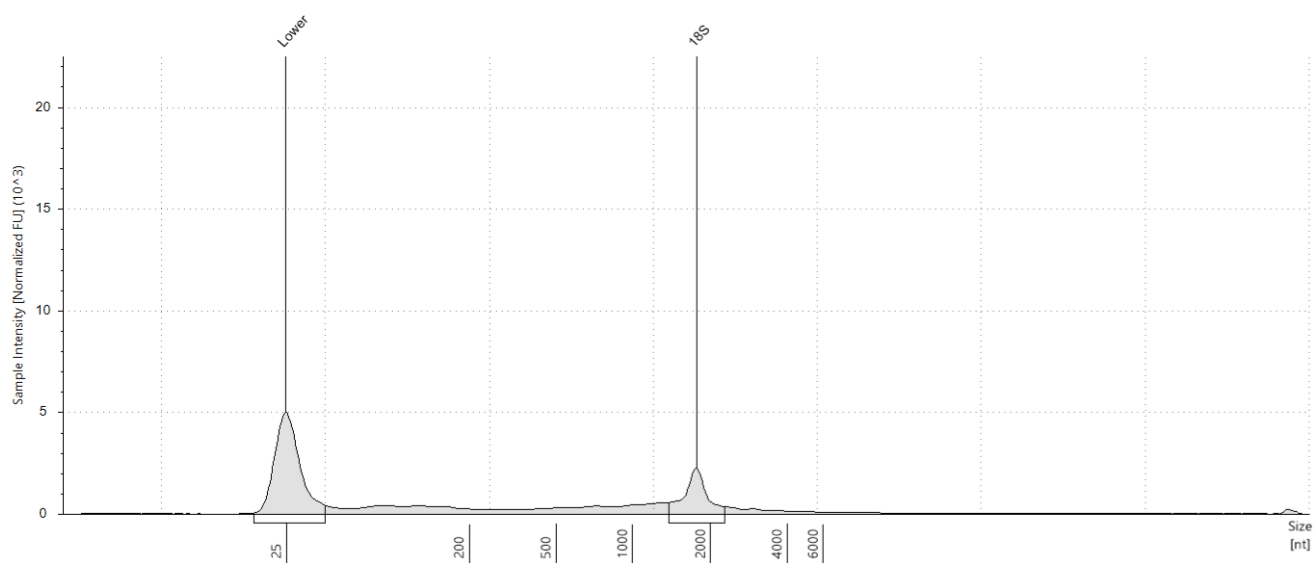
**G1: 1515****Sample Table**

Well	RINe	28S/18S (Area)	Conc. [ng/μl]	Sample Description	Alert	Observations
G1	9.7	-	90.5	1515		The upper ribosomal fragment has degraded

**Peak Table**

Size [nt]	Calibrated Conc. [ng/μl]	Assigned Conc. [ng/μl]	Peak Molarity [nmol/l]	% Integrated Area	Peak Comment	Observations
25	40.0	40.0	4710	-		Lower Marker
1608	42.2	-	77.3	100.00		18S

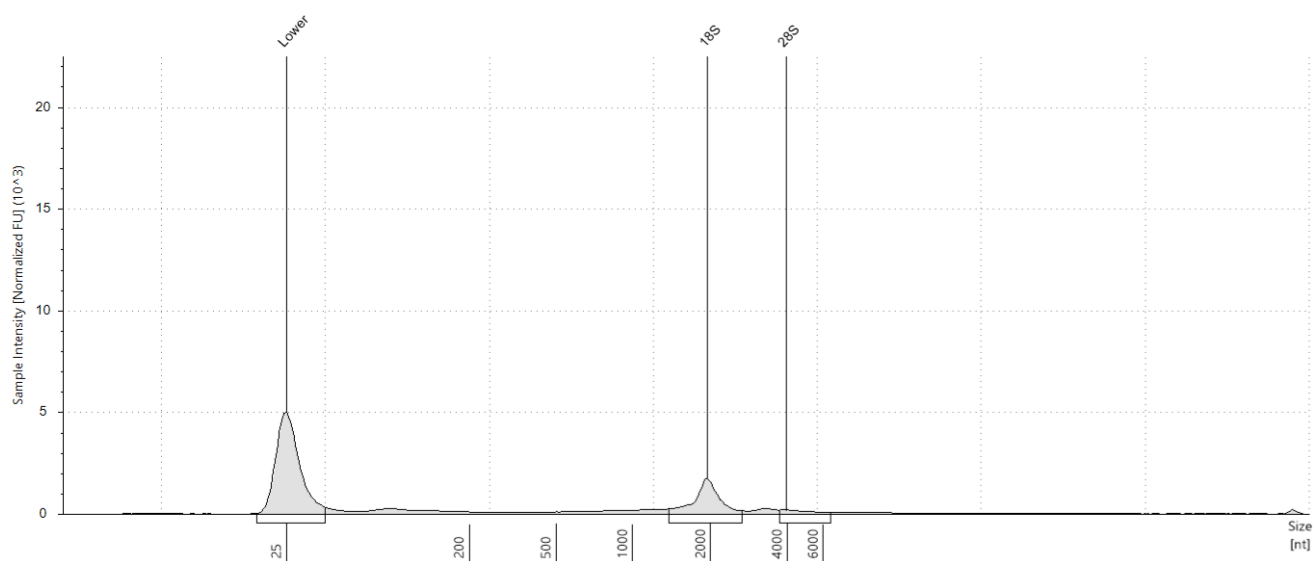


**H1: 1627****Sample Table**

Well	RINe	28S/18S (Area)	Conc. [ng/μl]	Sample Description	Alert	Observations
H1	7.6	-	31.2	1627		The upper ribosomal fragment has degraded

**Peak Table**

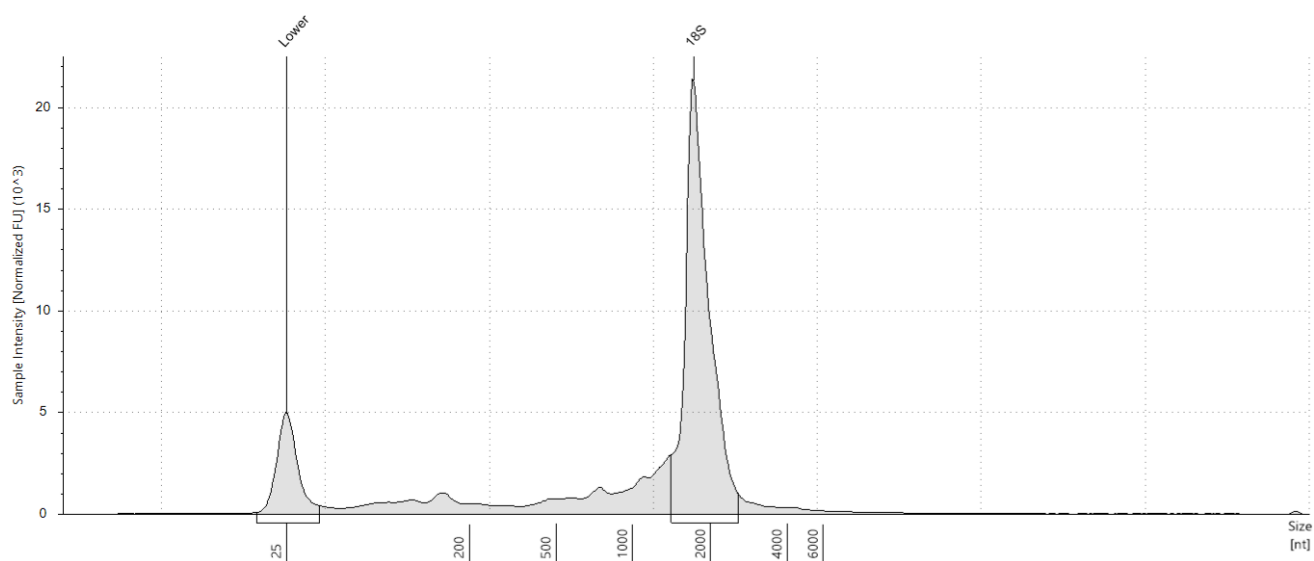
Size [nt]	Calibrated Conc. [ng/μl]	Assigned Conc. [ng/μl]	Peak Molarity [nmol/l]	% Integrated Area	Peak Comment	Observations
25	40.0	40.0	4710	-		Lower Marker
1775	8.86	-	14.7	100.00		18S

**A2: 1495****Sample Table**

Well	RINe	28S/18S (Area)	Conc. [ng/μl]	Sample Description	Alert	Observations
A2	8.9	0.1	19.9	1495	⚠	Sample concentration outside functional range for RINe and the assay; The upper ribosomal fragment has degraded

**Peak Table**

Size [nt]	Calibrated Conc. [ng/μl]	Assigned Conc. [ng/μl]	Peak Molarity [nmol/l]	% Integrated Area	Peak Comment	Observations
25	40.0	40.0	4710	-		Lower Marker
1948	8.12	-	12.3	88.08		18S
3972	1.10	-	0.814	11.92		28S

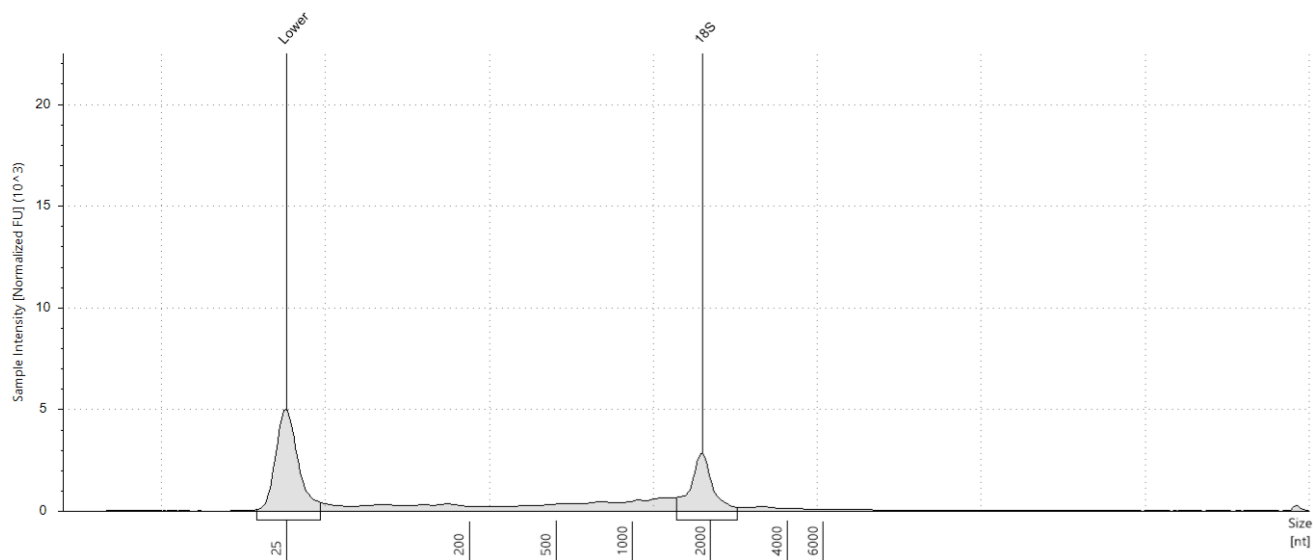
**B2: 1539****Sample Table**

Well	RINe	28S/18S (Area)	Conc. [ng/μl]	Sample Description	Alert	Observations
B2	9.6	-	171	1539		The upper ribosomal fragment has degraded

**Peak Table**

Size [nt]	Calibrated Conc. [ng/μl]	Assigned Conc. [ng/μl]	Peak Molarity [nmol/l]	% Integrated Area	Peak Comment	Observations
25	40.0	40.0	4710	-		Lower Marker
1714	111	-	191	100.00		18S

## C2: 763

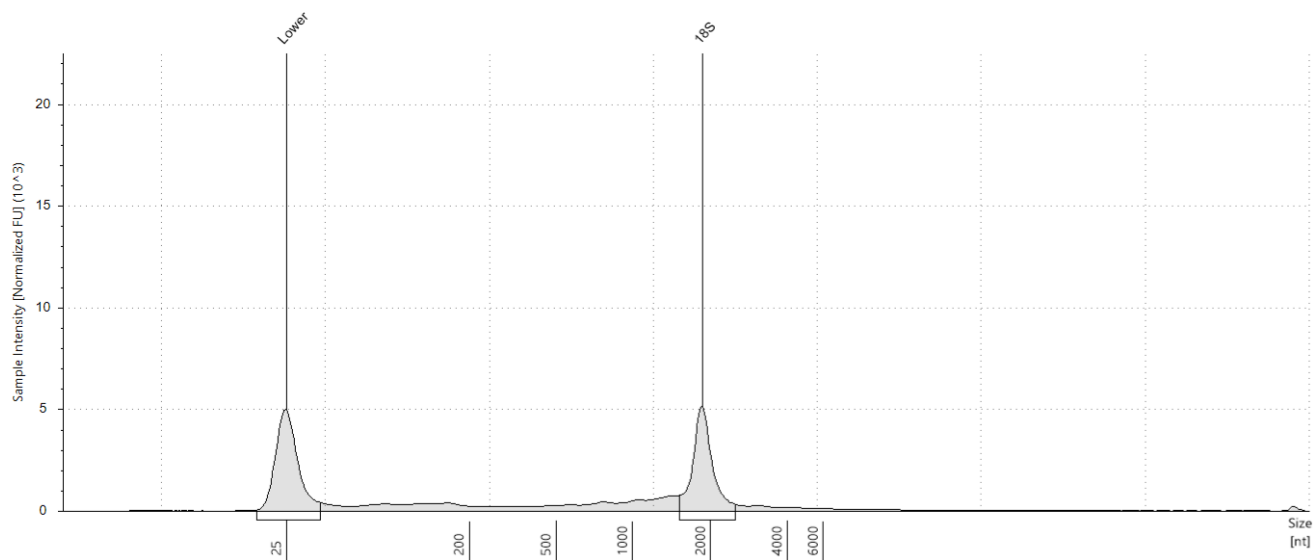


## Sample Table

Well	RINe	28S/18S (Area)	Conc. [ng/μl]	Sample Description	Alert	Observations
C2	7.8	-	37.3	763		The upper ribosomal fragment has degraded

## Peak Table

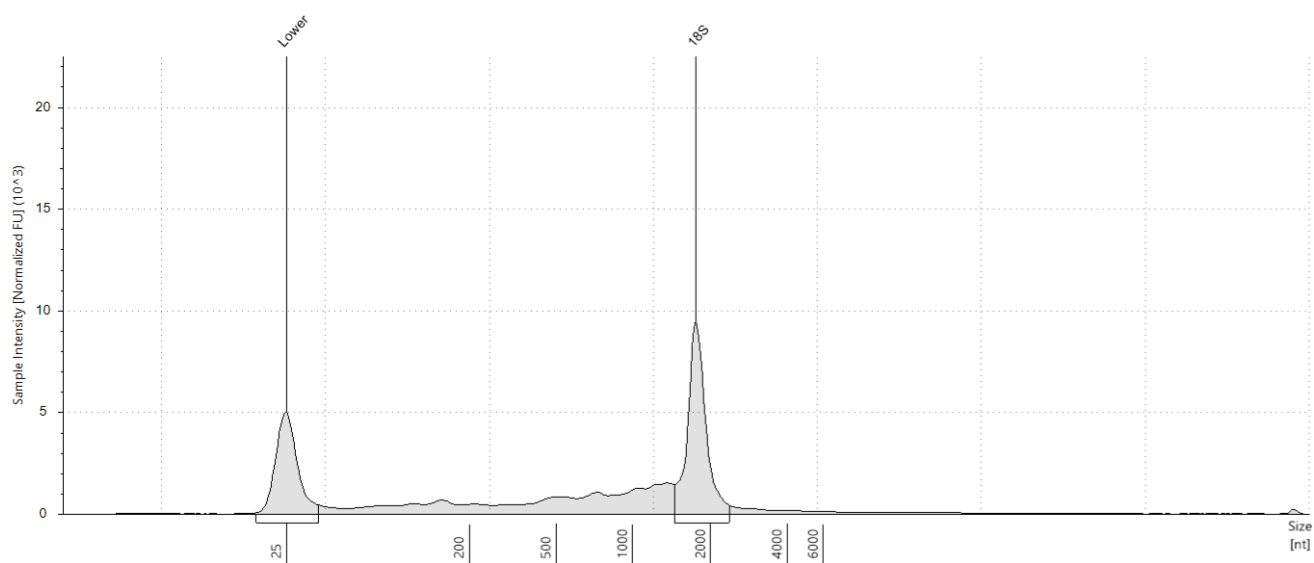
Size [nt]	Calibrated Conc. [ng/μl]	Assigned Conc. [ng/μl]	Peak Molarity [nmol/l]	% Integrated Area	Peak Comment	Observations
25	40.0	40.0	4710	-		Lower Marker
1862	12.5	-	19.8	100.00		18S

**D2: 1****Sample Table**

Well	RINe	28S/18S (Area)	Conc. [ng/μl]	Sample Description	Alert	Observations
D2	9.1	-	46.7	1		The upper ribosomal fragment has degraded

**Peak Table**

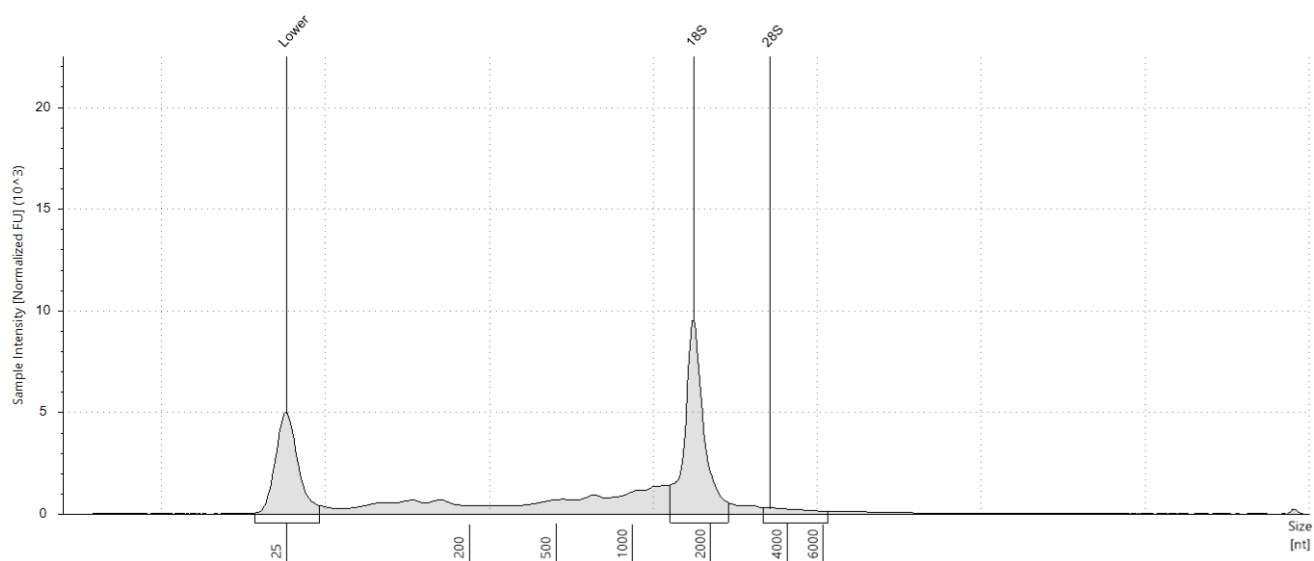
Size [nt]	Calibrated Conc. [ng/μl]	Assigned Conc. [ng/μl]	Peak Molarity [nmol/l]	% Integrated Area	Peak Comment	Observations
25	40.0	40.0	4710	-		Lower Marker
1868	20.6	-	32.4	100.00		18S

**E2: 741****Sample Table**

Well	RINe	28S/18S (Area)	Conc. [ng/μl]	Sample Description	Alert	Observations
E2	8.8	-	84.6	741		The upper ribosomal fragment has degraded

**Peak Table**

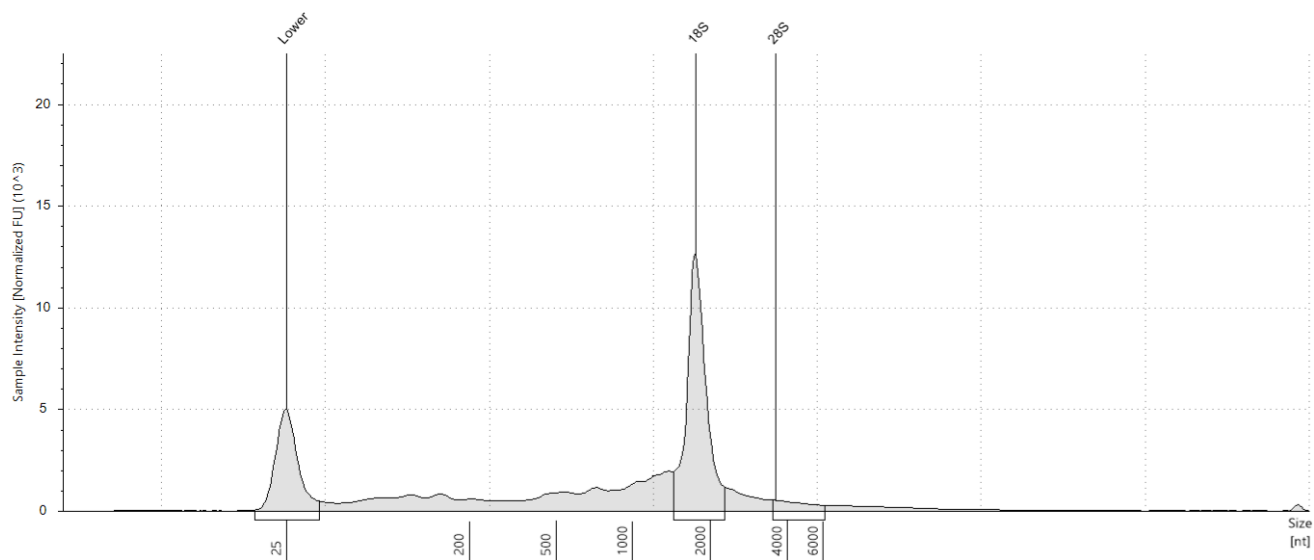
Size [nt]	Calibrated Conc. [ng/μl]	Assigned Conc. [ng/μl]	Peak Molarity [nmol/l]	% Integrated Area	Peak Comment	Observations
25	40.0	40.0	4710	-		Lower Marker
1755	36.1	-	60.6	100.00		18S

**F2: 1440****Sample Table**

Well	RINe	28S/18S (Area)	Conc. [ng/μl]	Sample Description	Alert	Observations
F2	8.9	0.1	82.7	1440		The upper ribosomal fragment has degraded

**Peak Table**

Size [nt]	Calibrated Conc. [ng/μl]	Assigned Conc. [ng/μl]	Peak Molarity [nmol/l]	% Integrated Area	Peak Comment	Observations
25	40.0	40.0	4710	-		Lower Marker
1730	36.4	-	62.0	93.62		18S
3434	2.48	-	2.13	6.38		28S

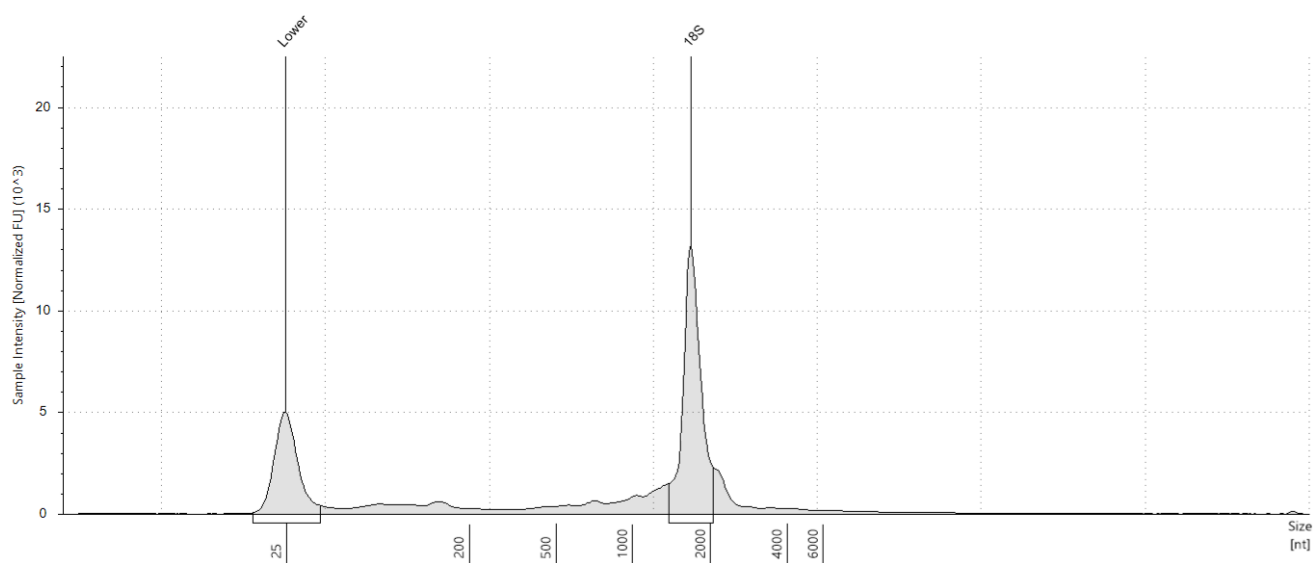
**G2: 1504****Sample Table**

Well	RINe	28S/18S (Area)	Conc. [ng/μl]	Sample Description	Alert	Observations
G2	9.0	0.1	115	1504		The upper ribosomal fragment has degraded

**Peak Table**

Size [nt]	Calibrated Conc. [ng/μl]	Assigned Conc. [ng/μl]	Peak Molarity [nmol/l]	% Integrated Area	Peak Comment	Observations
25	40.0	40.0	4710	-		Lower Marker
1755	49.3	-	82.7	93.02		18S
3619	3.70	-	3.01	6.98		28S



**H2: 1554****Sample Table**

Well	RINe	28S/18S (Area)	Conc. [ng/μl]	Sample Description	Alert	Observations
H2	9.8	-	83.7	1554		The upper ribosomal fragment has degraded

**Peak Table**

Size [nt]	Calibrated Conc. [ng/μl]	Assigned Conc. [ng/μl]	Peak Molarity [nmol/l]	% Integrated Area	Peak Comment	Observations
25	40.0	40.0	4710	-		Lower Marker
1695	45.0	-	78.1	100.00		18S