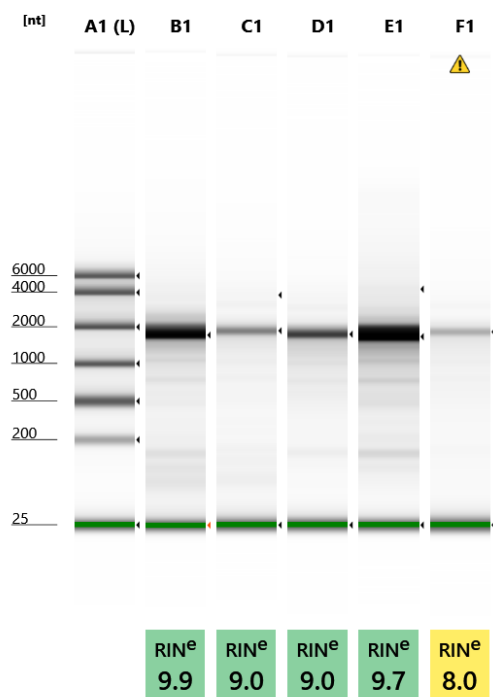


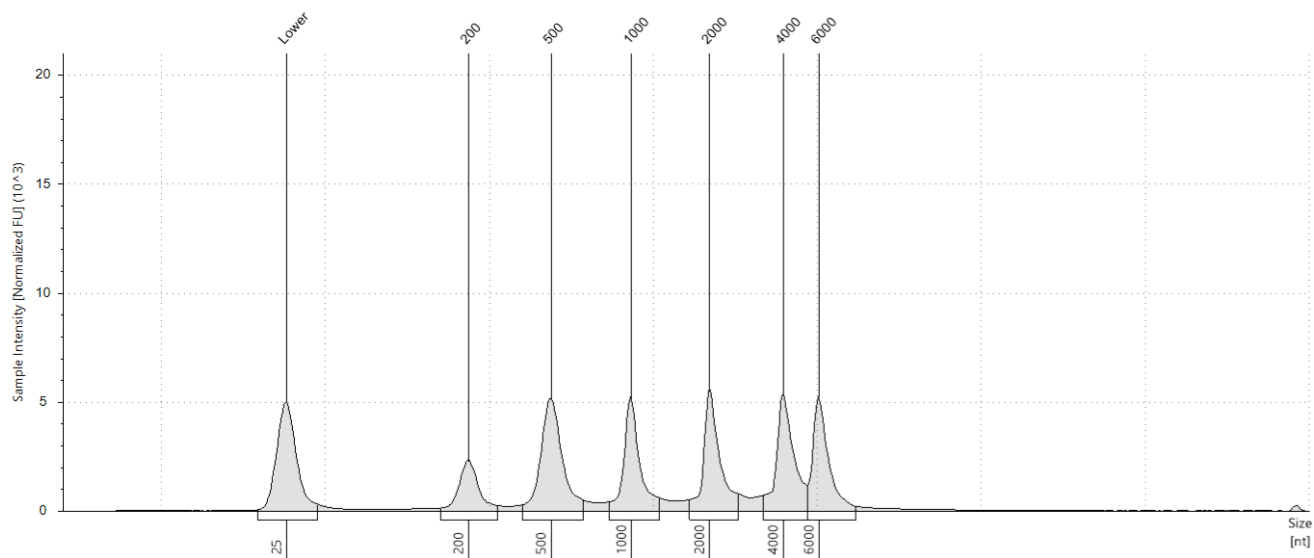
Filename: 2020-09-17 - 17.02.45.RNA



Default image (Contrast 100%)

Sample Info

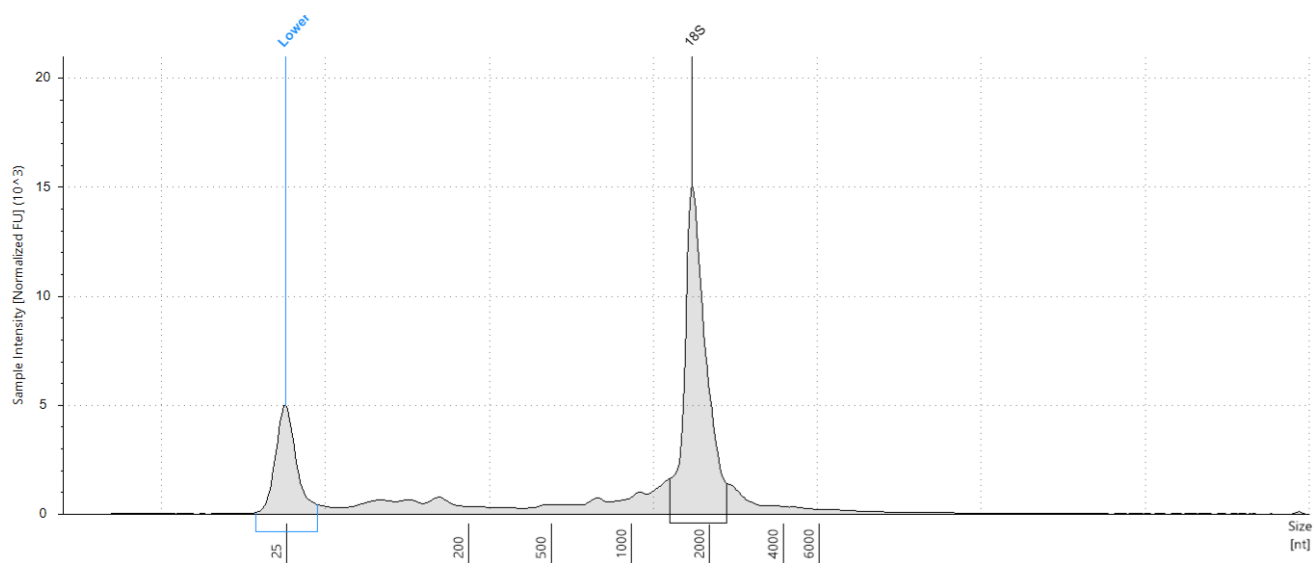
Well	RINe	28S/18S (Area)	Conc. [ng/μl]	Sample Description	Alert	Observations
A1	-	-	129	Ladder		Ladder
B1	9.9	-	117	1498		The upper ribosomal fragment has degraded
C1	9.0	0.1	36.5	1491		The upper ribosomal fragment has degraded
D1	9.0	-	53.3	1597		The upper ribosomal fragment has degraded
E1	9.7	0.1	157	1527		The upper ribosomal fragment has degraded
F1	8.0	-	23.3	1474	⚠	Sample concentration outside functional range for RINe and the assay; The upper ribosomal fragment has degraded

A1: Ladder**Sample Table**

Well	RINe	28S/18S (Area)	Conc. [ng/μl]	Sample Description	Alert	Observations
A1	-	-	129	Ladder		Ladder

Peak Table

Size [nt]	Calibrated Conc. [ng/μl]	Assigned Conc. [ng/μl]	Peak Molarity [nmol/l]	% Integrated Area	Peak Comment	Observations
25	40.0	40.0	4710	-		Lower Marker
200	10.5	-	155	9.09		
500	25.3	-	149	21.86		
1000	18.9	-	55.5	16.31		
2000	20.5	-	30.2	17.74		
4000	21.5	-	15.8	18.61		
6000	19.0	-	9.29	16.38		

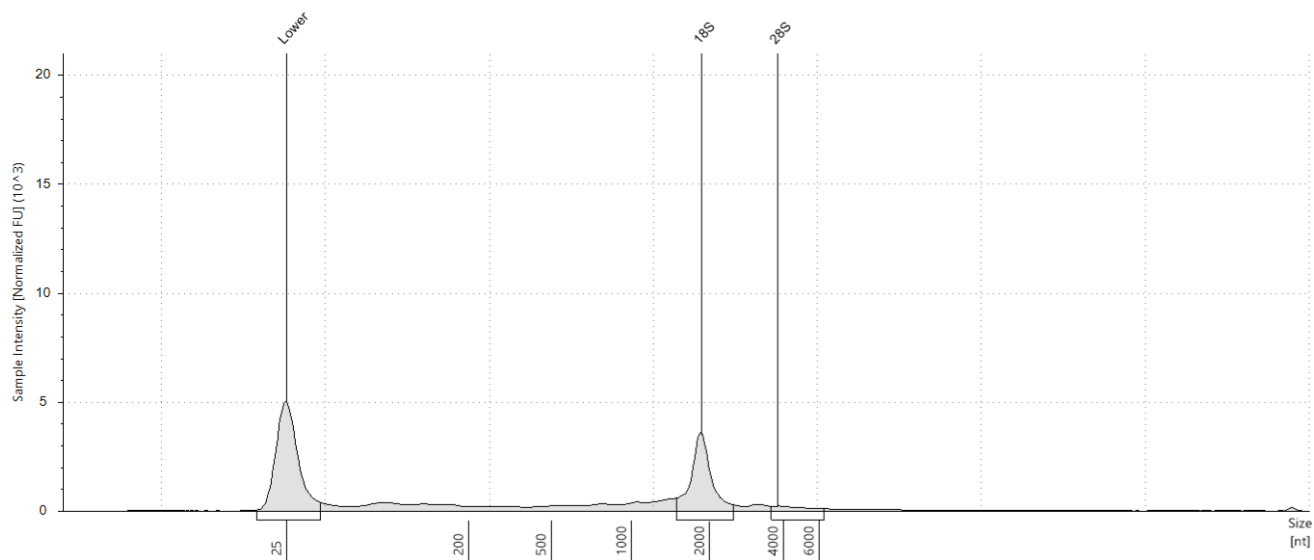
B1: 1498**Sample Table**

Well	RINe	28S/18S (Area)	Conc. [ng/μl]	Sample Description	Alert	Observations
B1	9.9	-	117	1498		The upper ribosomal fragment has degraded

Peak Table

Size [nt]	Calibrated Conc. [ng/μl]	Assigned Conc. [ng/μl]	Peak Molarity [nmol/l]	% Integrated Area	Peak Comment	Observations
25	40.0	40.0	4710	-		Lower Marker
1725	69.5	-	118	100.00		18S

C1: 1491

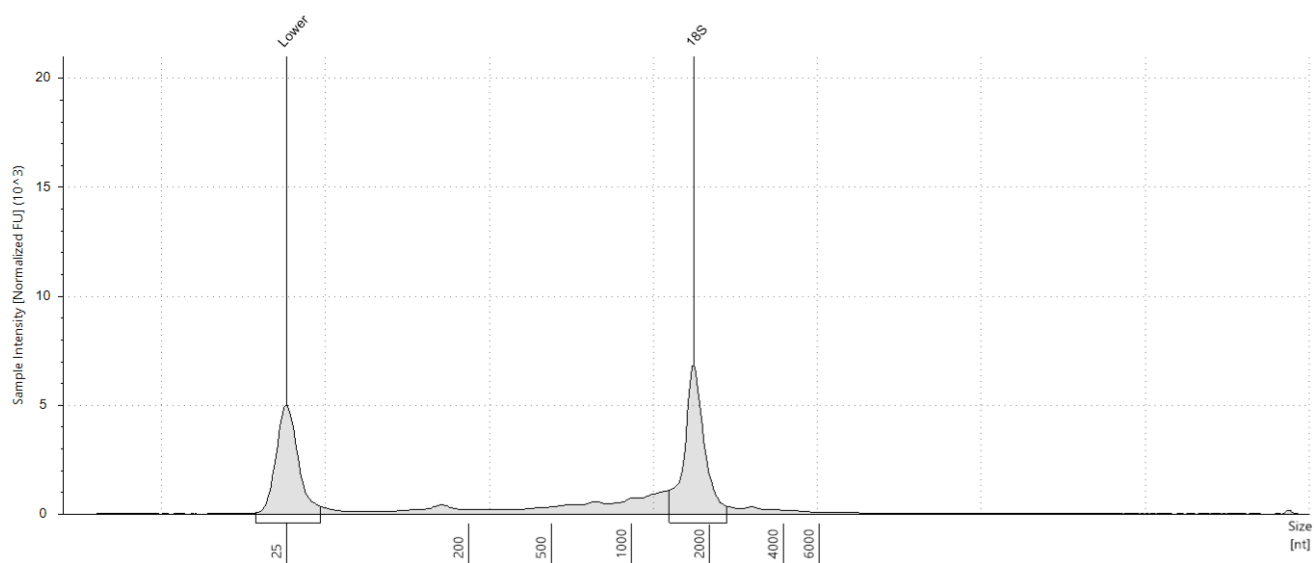


Sample Table

Well	RINe	28S/18S (Area)	Conc. [ng/μl]	Sample Description	Alert	Observations
C1	9.0	0.1	36.5	1491		The upper ribosomal fragment has degraded

Peak Table

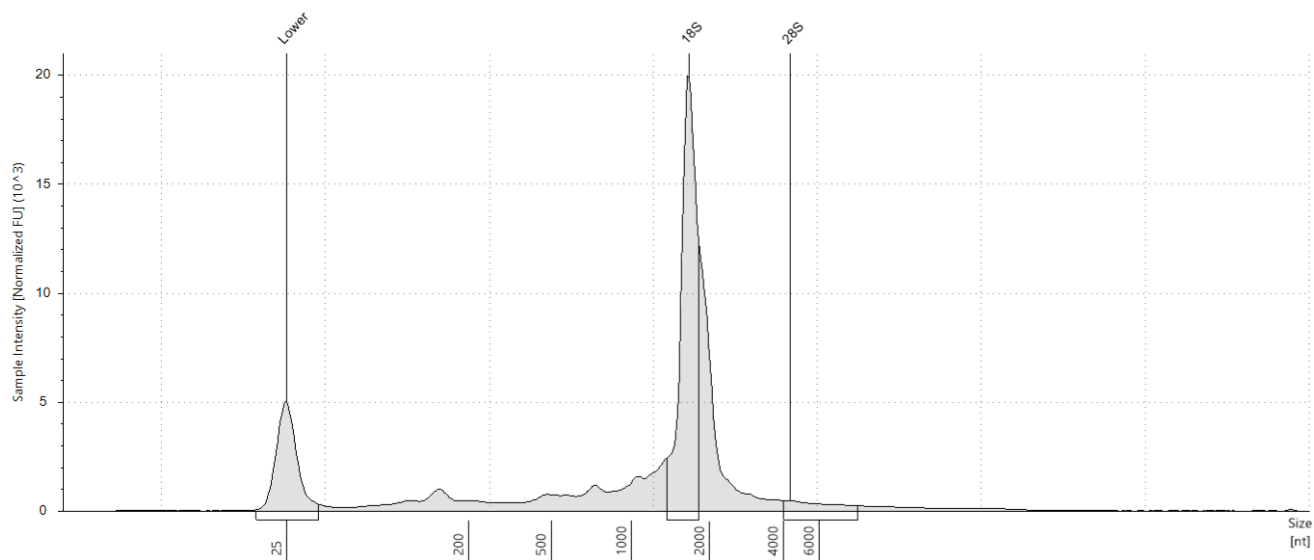
Size [nt]	Calibrated Conc. [ng/μl]	Assigned Conc. [ng/μl]	Peak Molarity [nmol/l]	% Integrated Area	Peak Comment	Observations
25	40.0	40.0	4710	-		Lower Marker
1871	14.5	-	22.8	90.68		18S
3820	1.49	-	1.15	9.32		28S

D1: 1597**Sample Table**

Well	RINe	28S/18S (Area)	Conc. [ng/μl]	Sample Description	Alert	Observations
D1	9.0	-	53.3	1597		The upper ribosomal fragment has degraded

Peak Table

Size [nt]	Calibrated Conc. [ng/μl]	Assigned Conc. [ng/μl]	Peak Molarity [nmol/l]	% Integrated Area	Peak Comment	Observations
25	40.0	40.0	4710	-		Lower Marker
1749	27.8	-	46.7	100.00		18S

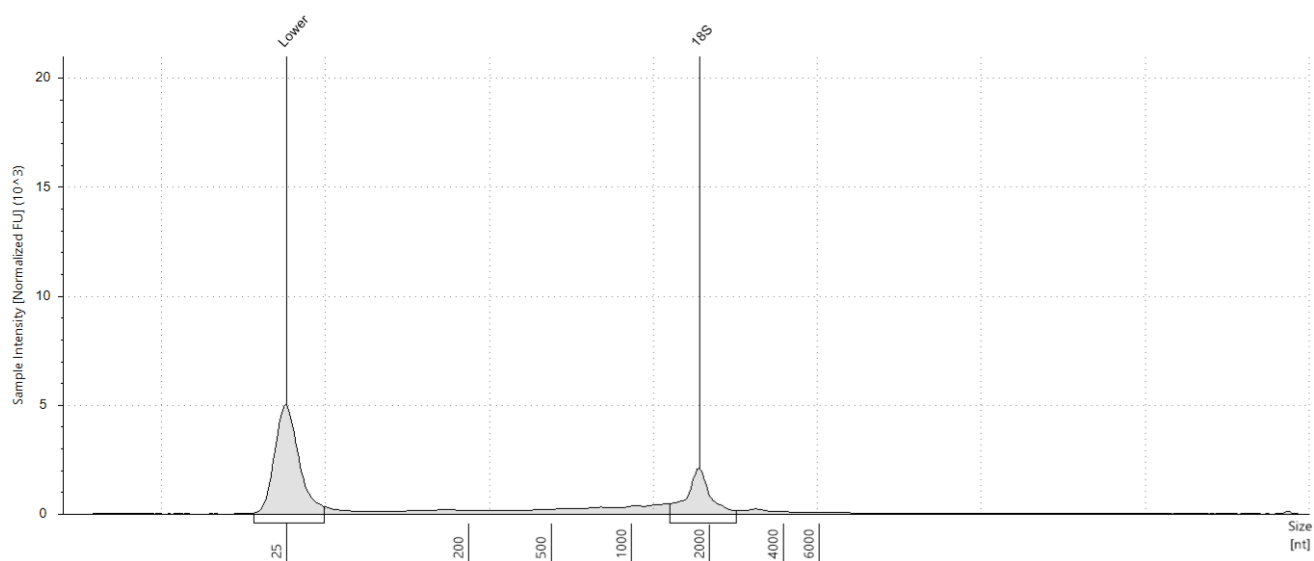
E1: 1527**Sample Table**

Well	RINe	28S/18S (Area)	Conc. [ng/μl]	Sample Description	Alert	Observations
E1	9.7	0.1	157	1527		The upper ribosomal fragment has degraded

Peak Table

Size [nt]	Calibrated Conc. [ng/μl]	Assigned Conc. [ng/μl]	Peak Molarity [nmol/l]	% Integrated Area	Peak Comment	Observations
25	40.0	40.0	4710	-		Lower Marker
1668	67.4	-	119	93.37		18S
4346	4.79	-	3.24	6.63		28S

F1: 1474



Sample Table

Well	RINe	28S/18S (Area)	Conc. [ng/μl]	Sample Description	Alert	Observations
F1	8.0	-	23.3	1474	⚠	Sample concentration outside functional range for RINe and the assay; The upper ribosomal fragment has degraded

Peak Table

Size [nt]	Calibrated Conc. [ng/μl]	Assigned Conc. [ng/μl]	Peak Molarity [nmol/l]	% Integrated Area	Peak Comment	Observations
25	40.0	40.0	4710	-		Lower Marker
1828	8.88	-	14.3	100.00		18S