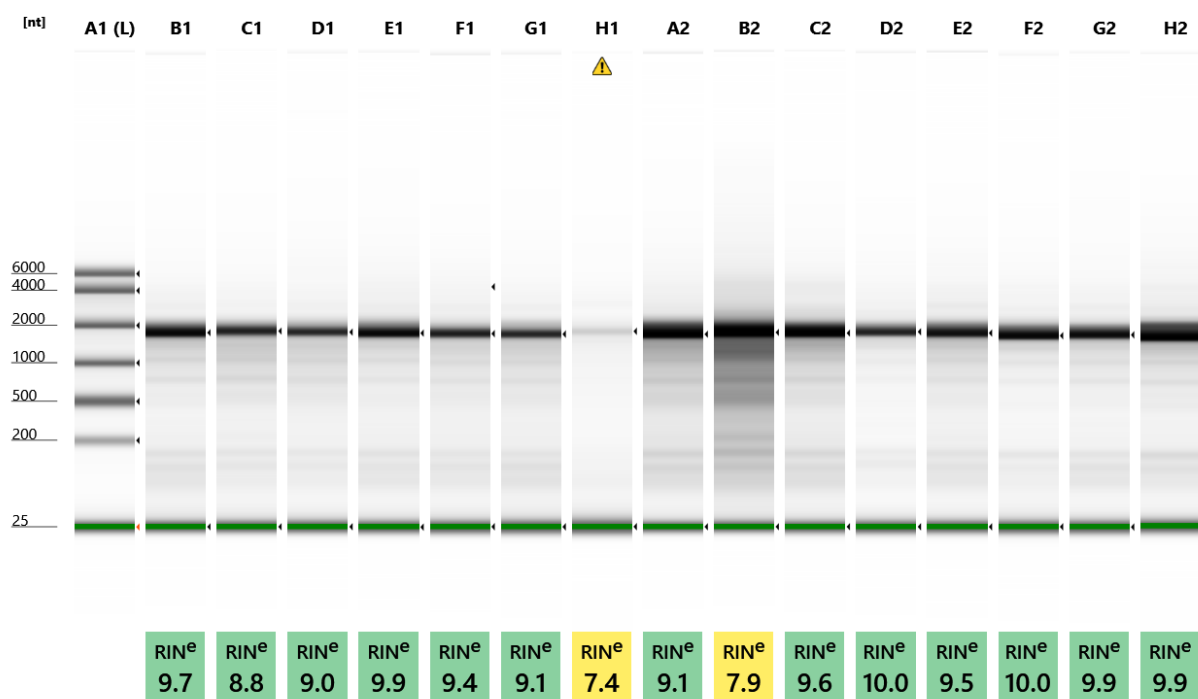


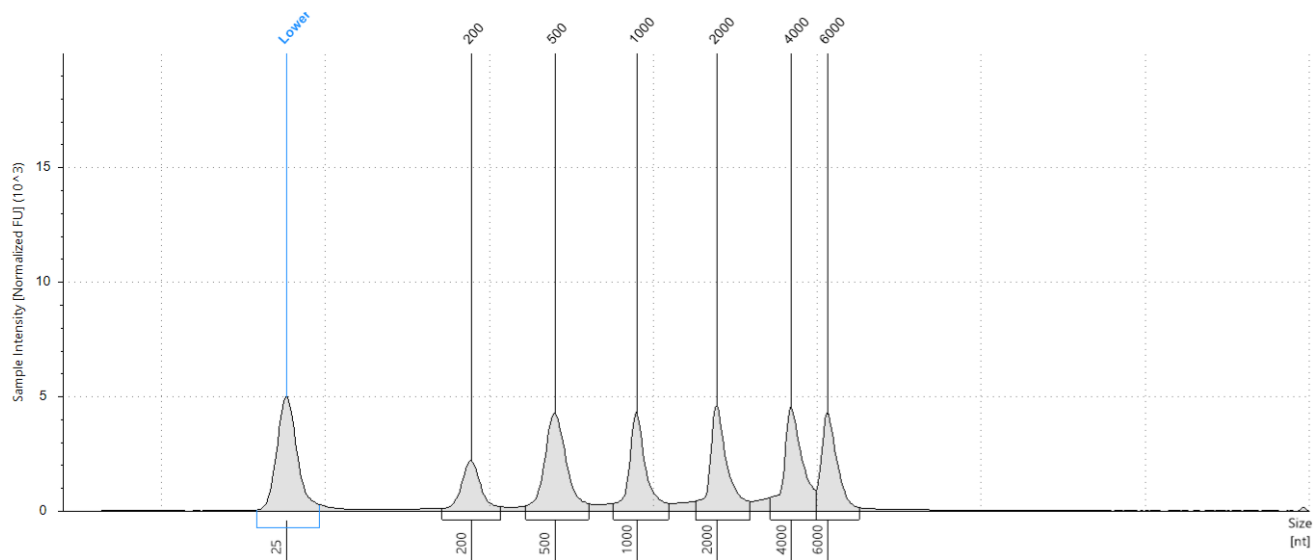
Filename: 2020-09-23 - 15.03.25.RNA



Default image (Contrast 100%)

Sample Info

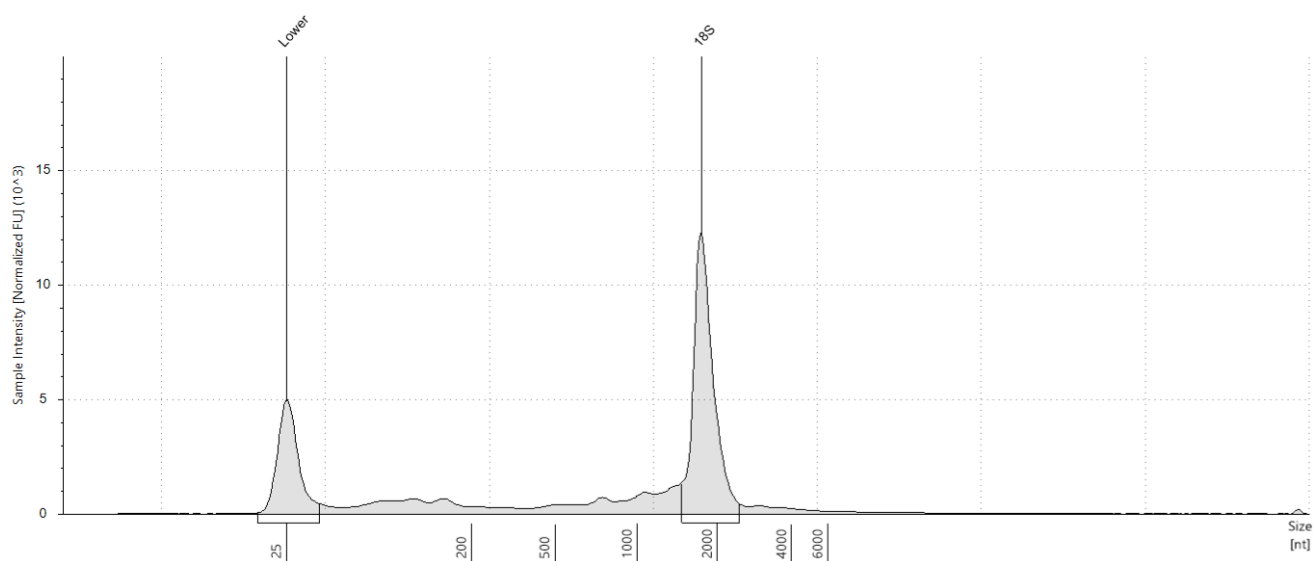
Well	RINe	28S/18S (Area)	Conc. [ng/μl]	Sample Description	Alert	Observations
A1	-	-	107	Ladder		Ladder
B1	9.7	-	92.9	453		The upper ribosomal fragment has degraded
C1	8.8	-	77.5	334		The upper ribosomal fragment has degraded
D1	9.0	-	68.3	381		The upper ribosomal fragment has degraded
E1	9.9	-	85.4	441		The upper ribosomal fragment has degraded
F1	9.4	0.1	67.2	807		The upper ribosomal fragment has degraded
G1	9.1	-	66.6	1452		The upper ribosomal fragment has degraded
H1	7.4	-	19.3	1485	⚠	Sample concentration outside functional range for RINe and the assay; The upper ribosomal fragment has degraded
A2	9.1	-	153	1560		The upper ribosomal fragment has degraded
B2	7.9	-	251	1621		The upper ribosomal fragment has degraded
C2	9.6	-	133	1543		The upper ribosomal fragment has degraded
D2	10.0	-	54.2	7		The upper ribosomal fragment has degraded
E2	9.5	-	85.8	422		The upper ribosomal fragment has degraded
F2	10.0	-	72.5	434		The upper ribosomal fragment has degraded
G2	9.9	-	75.4	405		The upper ribosomal fragment has degraded
H2	9.9	-	108	1510		The upper ribosomal fragment has degraded

A1: Ladder**Sample Table**

Well	RINe	28S/18S (Area)	Conc. [ng/μl]	Sample Description	Alert	Observations
A1	-	-	107	Ladder		Ladder

Peak Table

Size [nt]	Calibrated Conc. [ng/μl]	Assigned Conc. [ng/μl]	Peak Molarity [nmol/l]	% Integrated Area	Peak Comment	Observations
25	40.0	40.0	4710	-		Lower Marker
200	9.72	-	143	9.97		
500	20.9	-	123	21.44		
1000	15.9	-	46.9	16.34		
2000	17.5	-	25.7	17.94		
4000	18.3	-	13.5	18.81		
6000	15.1	-	7.40	15.49		

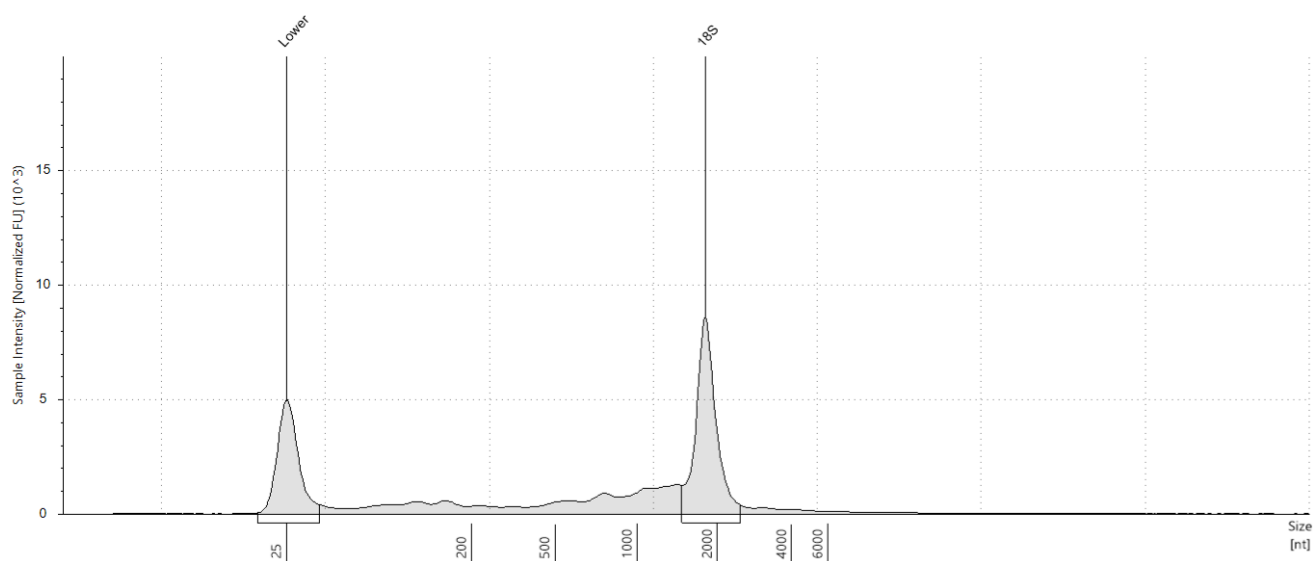
B1: 453**Sample Table**

Well	RINe	28S/18S (Area)	Conc. [ng/μl]	Sample Description	Alert	Observations
B1	9.7	-	92.9	453		The upper ribosomal fragment has degraded

Peak Table

Size [nt]	Calibrated Conc. [ng/μl]	Assigned Conc. [ng/μl]	Peak Molarity [nmol/l]	% Integrated Area	Peak Comment	Observations
25	40.0	40.0	4710	-		Lower Marker
1748	52.7	-	88.7	100.00		18S

C1: 334

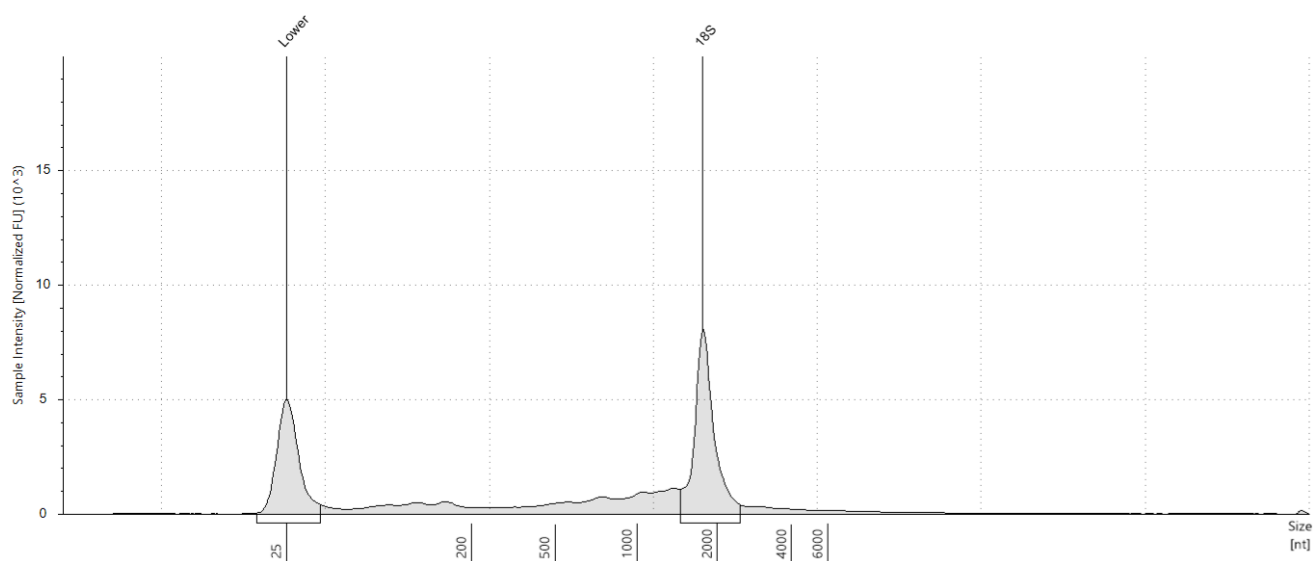


Sample Table

Well	RINe	28S/18S (Area)	Conc. [ng/μl]	Sample Description	Alert	Observations
C1	8.8	-	77.5	334		The upper ribosomal fragment has degraded

Peak Table

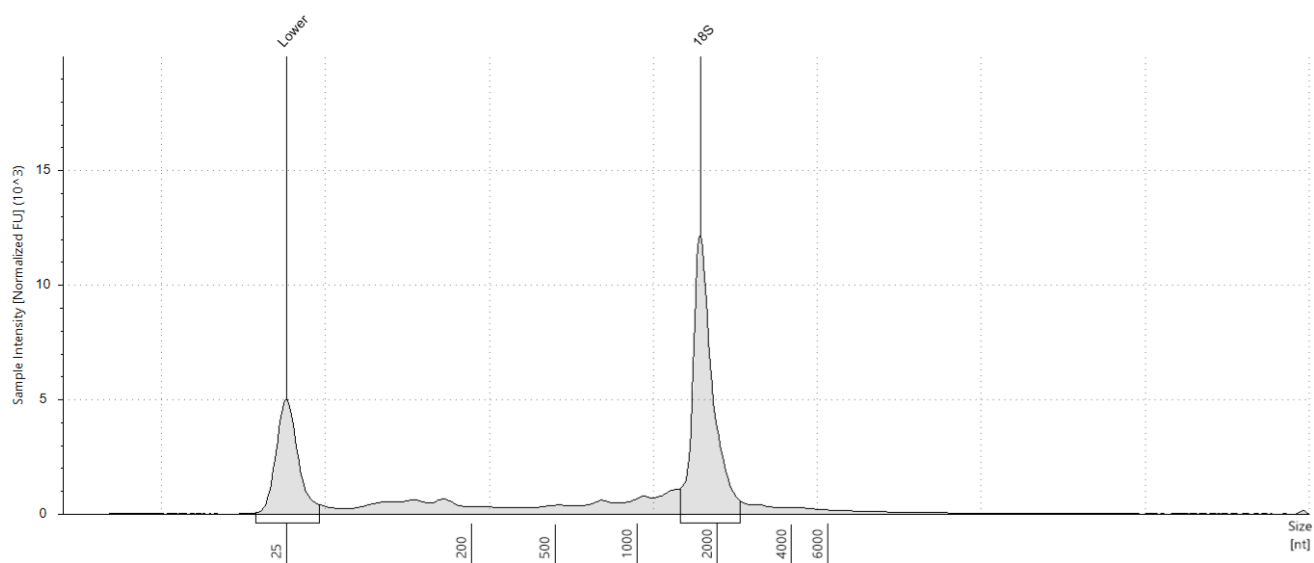
Size [nt]	Calibrated Conc. [ng/μl]	Assigned Conc. [ng/μl]	Peak Molarity [nmol/l]	% Integrated Area	Peak Comment	Observations
25	40.0	40.0	4710	-		Lower Marker
1797	36.7	-	60.1	100.00		18S

D1: 381**Sample Table**

Well	RINe	28S/18S (Area)	Conc. [ng/μl]	Sample Description	Alert	Observations
D1	9.0	-	68.3	381		The upper ribosomal fragment has degraded

Peak Table

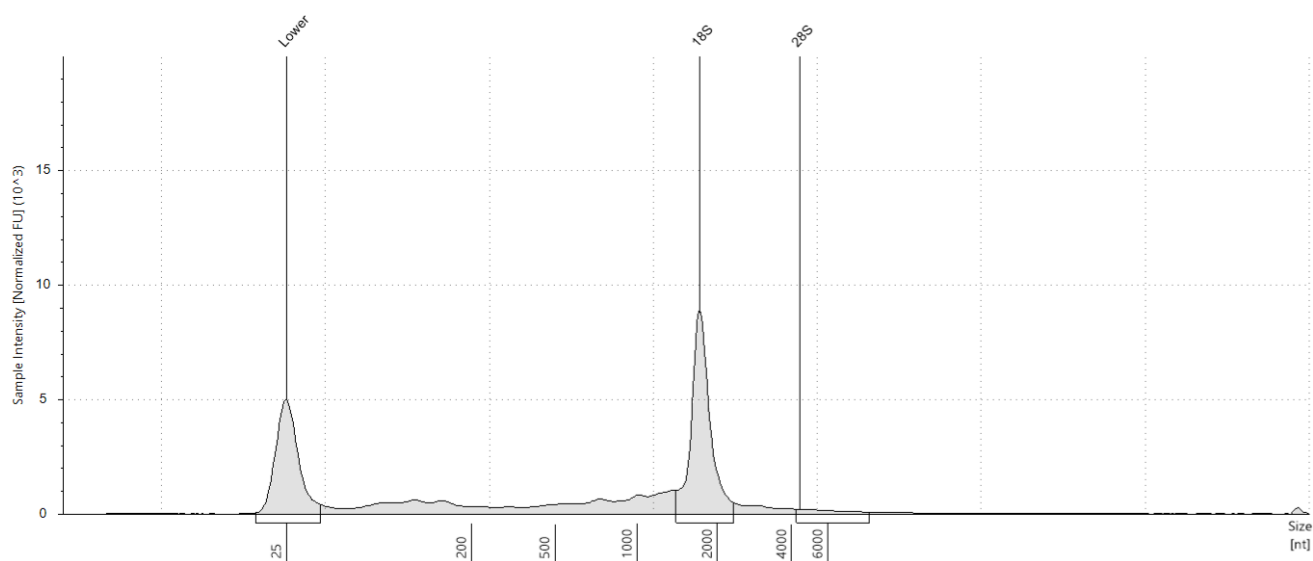
Size [nt]	Calibrated Conc. [ng/μl]	Assigned Conc. [ng/μl]	Peak Molarity [nmol/l]	% Integrated Area	Peak Comment	Observations
25	40.0	40.0	4710	-		Lower Marker
1762	32.1	-	53.5	100.00		18S

E1: 441**Sample Table**

Well	RINe	28S/18S (Area)	Conc. [ng/μl]	Sample Description	Alert	Observations
E1	9.9	-	85.4	441		The upper ribosomal fragment has degraded

Peak Table

Size [nt]	Calibrated Conc. [ng/μl]	Assigned Conc. [ng/μl]	Peak Molarity [nmol/l]	% Integrated Area	Peak Comment	Observations
25	40.0	40.0	4710	-		Lower Marker
1734	49.1	-	83.2	100.00		18S

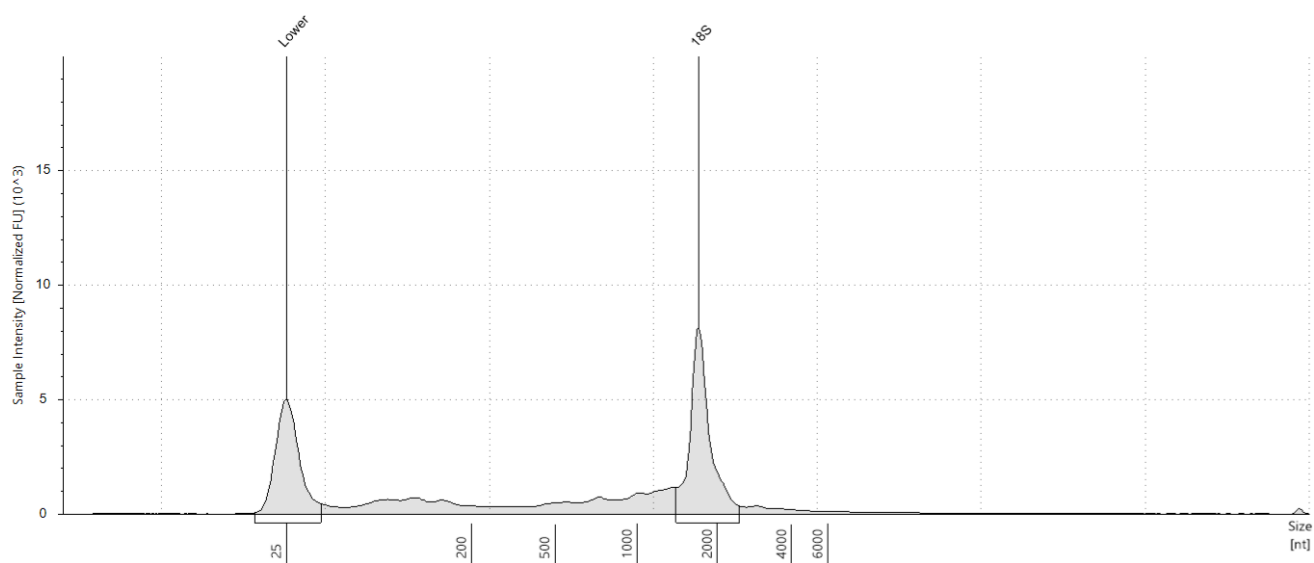
F1: 807**Sample Table**

Well	RINe	28S/18S (Area)	Conc. [ng/μl]	Sample Description	Alert	Observations
F1	9.4	0.1	67.2	807		The upper ribosomal fragment has degraded

Peak Table

Size [nt]	Calibrated Conc. [ng/μl]	Assigned Conc. [ng/μl]	Peak Molarity [nmol/l]	% Integrated Area	Peak Comment	Observations
25	40.0	40.0	4710	-		Lower Marker
1709	32.7	-	56.3	95.06		18S
4350	1.70	-	1.15	4.94		28S

G1: 1452



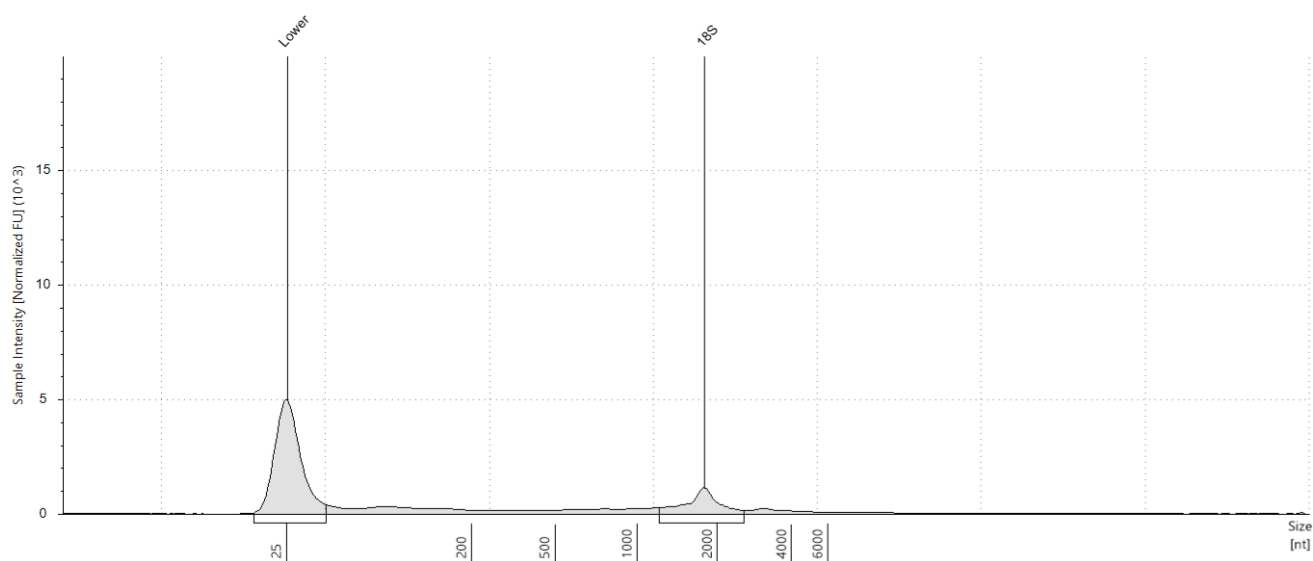
Sample Table

Well	RINe	28S/18S (Area)	Conc. [ng/μl]	Sample Description	Alert	Observations
G1	9.1	-	66.6	1452		The upper ribosomal fragment has degraded

Peak Table

Size [nt]	Calibrated Conc. [ng/μl]	Assigned Conc. [ng/μl]	Peak Molarity [nmol/l]	% Integrated Area	Peak Comment	Observations
25	40.0	40.0	4710	-		Lower Marker
1698	30.4	-	52.7	100.00		18S

H1: 1485

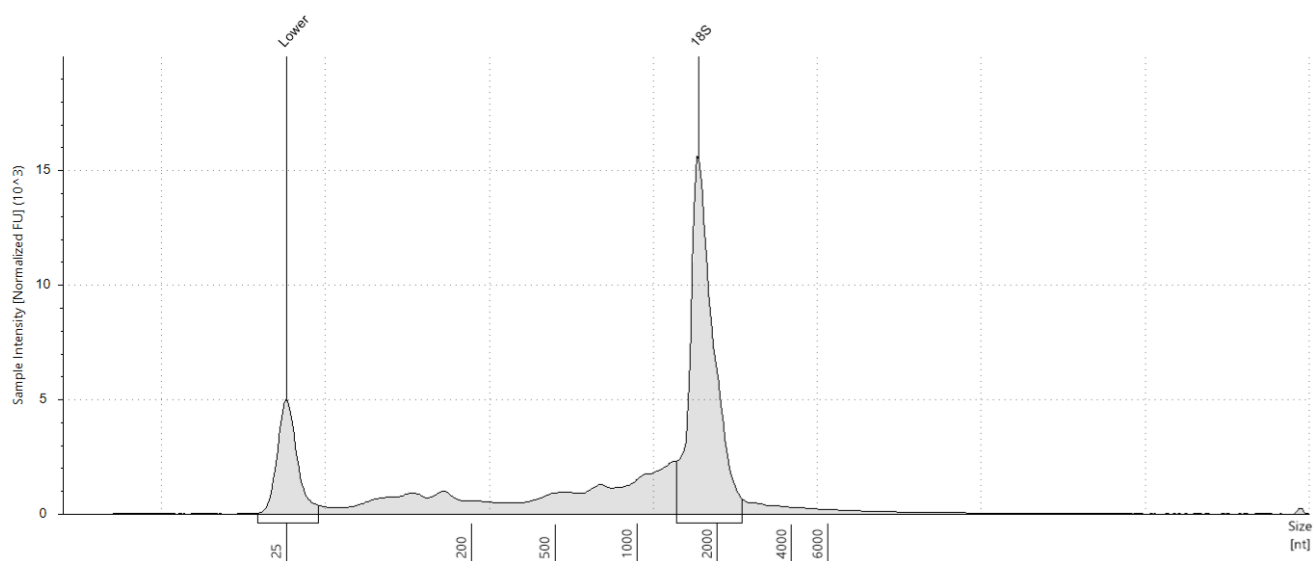


Sample Table

Well	RINe	28S/18S (Area)	Conc. [ng/μl]	Sample Description	Alert	Observations
H1	7.4	-	19.3	1485	⚠	Sample concentration outside functional range for RINe and the assay; The upper ribosomal fragment has degraded

Peak Table

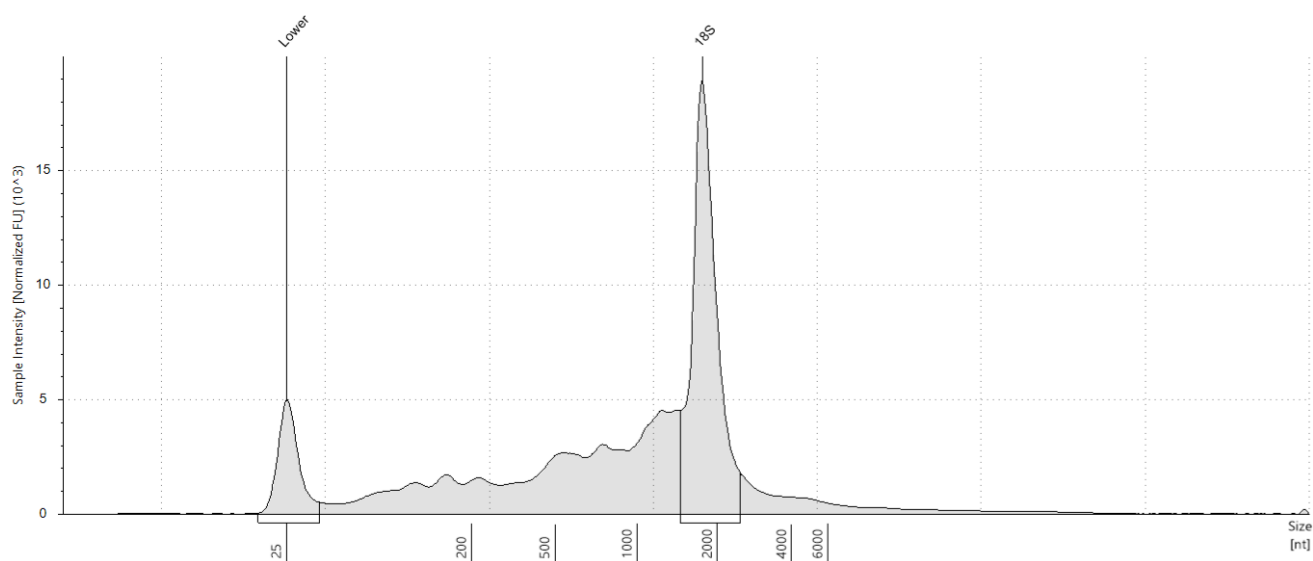
Size [nt]	Calibrated Conc. [ng/μl]	Assigned Conc. [ng/μl]	Peak Molarity [nmol/l]	% Integrated Area	Peak Comment	Observations
25	40.0	40.0	4710	-		Lower Marker
1787	6.02	-	9.90	100.00		18S

A2: 1560**Sample Table**

Well	RINe	28S/18S (Area)	Conc. [ng/μl]	Sample Description	Alert	Observations
A2	9.1	-	153	1560		The upper ribosomal fragment has degraded

Peak Table

Size [nt]	Calibrated Conc. [ng/μl]	Assigned Conc. [ng/μl]	Peak Molarity [nmol/l]	% Integrated Area	Peak Comment	Observations
25	40.0	40.0	4710	-		Lower Marker
1695	82.9	-	144	100.00		18S

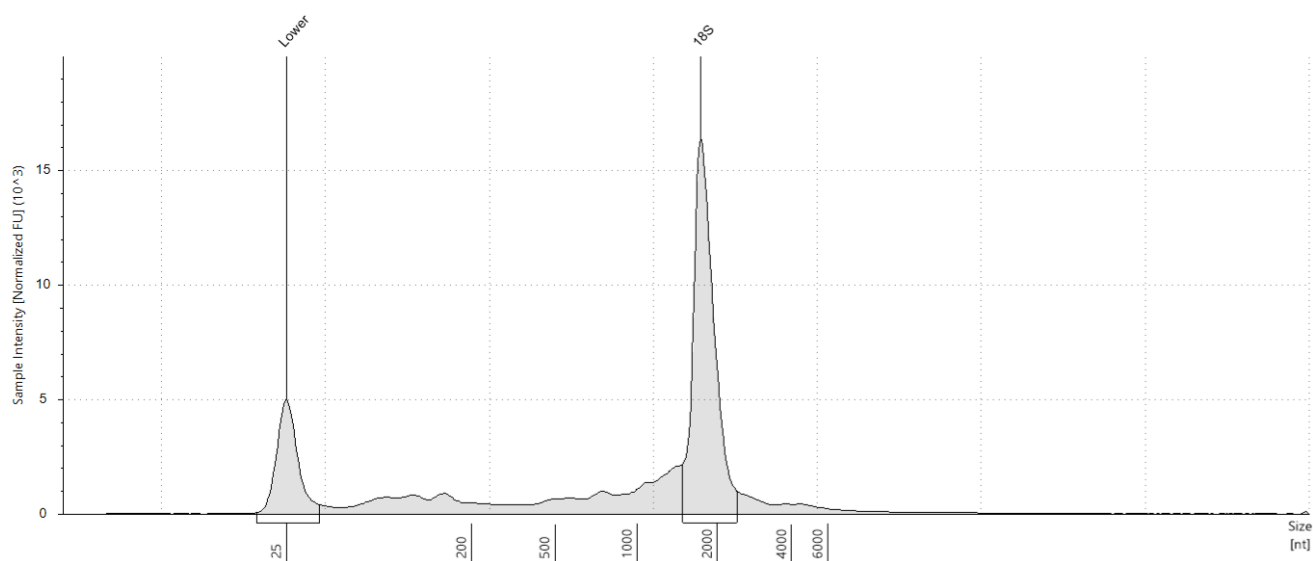
B2: 1621**Sample Table**

Well	RINe	28S/18S (Area)	Conc. [ng/μl]	Sample Description	Alert	Observations
B2	7.9	-	251	1621		The upper ribosomal fragment has degraded

Peak Table

Size [nt]	Calibrated Conc. [ng/μl]	Assigned Conc. [ng/μl]	Peak Molarity [nmol/l]	% Integrated Area	Peak Comment	Observations
25	40.0	40.0	4710	-		Lower Marker
1754	99.4	-	167	100.00		18S

C2: 1543



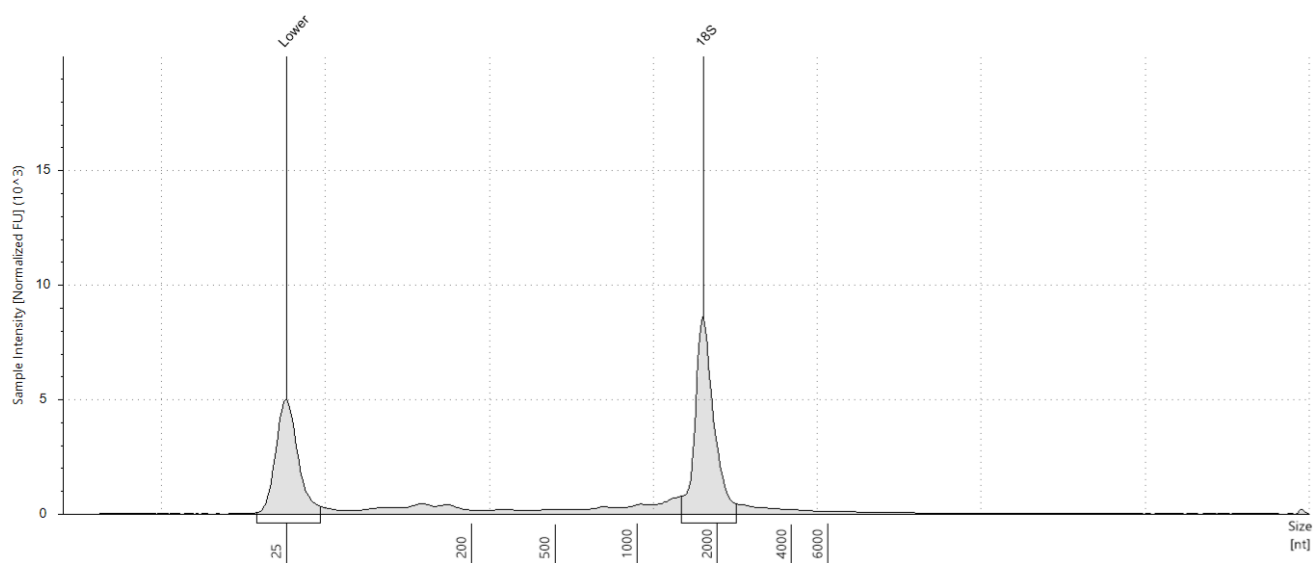
Sample Table

Well	RINe	28S/18S (Area)	Conc. [ng/μl]	Sample Description	Alert	Observations
C2	9.6	-	133	1543		The upper ribosomal fragment has degraded

Peak Table

Size [nt]	Calibrated Conc. [ng/μl]	Assigned Conc. [ng/μl]	Peak Molarity [nmol/l]	% Integrated Area	Peak Comment	Observations
25	40.0	40.0	4710	-		Lower Marker
1726	72.6	-	124	100.00		18S

D2: 7

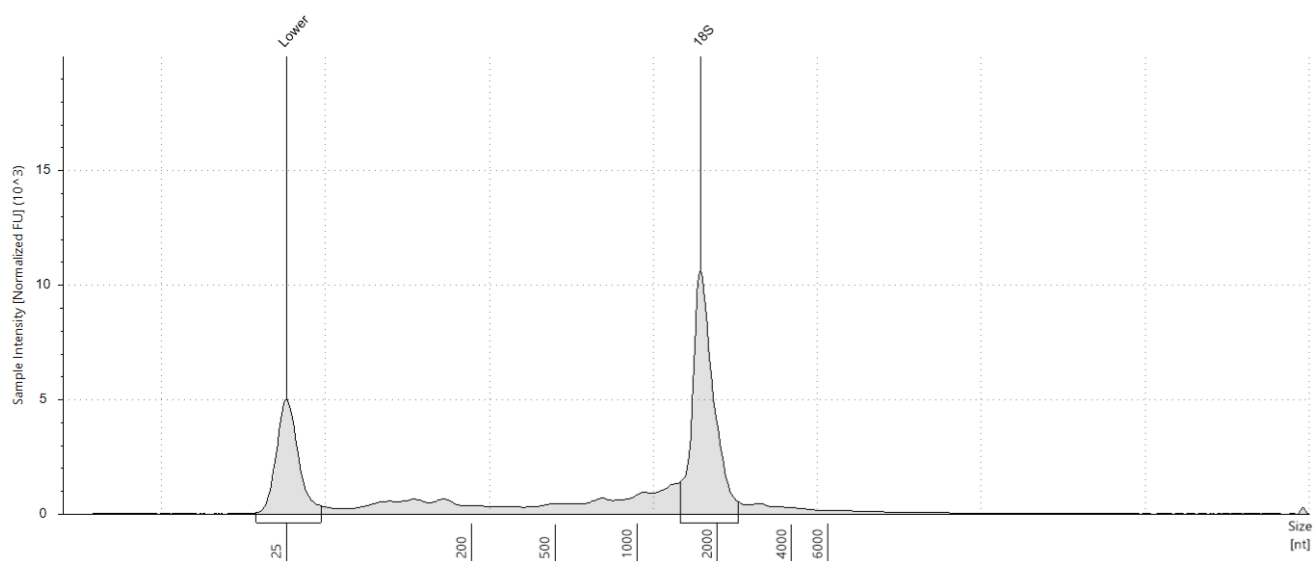


Sample Table

Well	RINe	28S/18S (Area)	Conc. [ng/μl]	Sample Description	Alert	Observations
D2	10.0	-	54.2	7		The upper ribosomal fragment has degraded

Peak Table

Size [nt]	Calibrated Conc. [ng/μl]	Assigned Conc. [ng/μl]	Peak Molarity [nmol/l]	% Integrated Area	Peak Comment	Observations
25	40.0	40.0	4710	-		Lower Marker
1774	32.3	-	53.6	100.00		18S

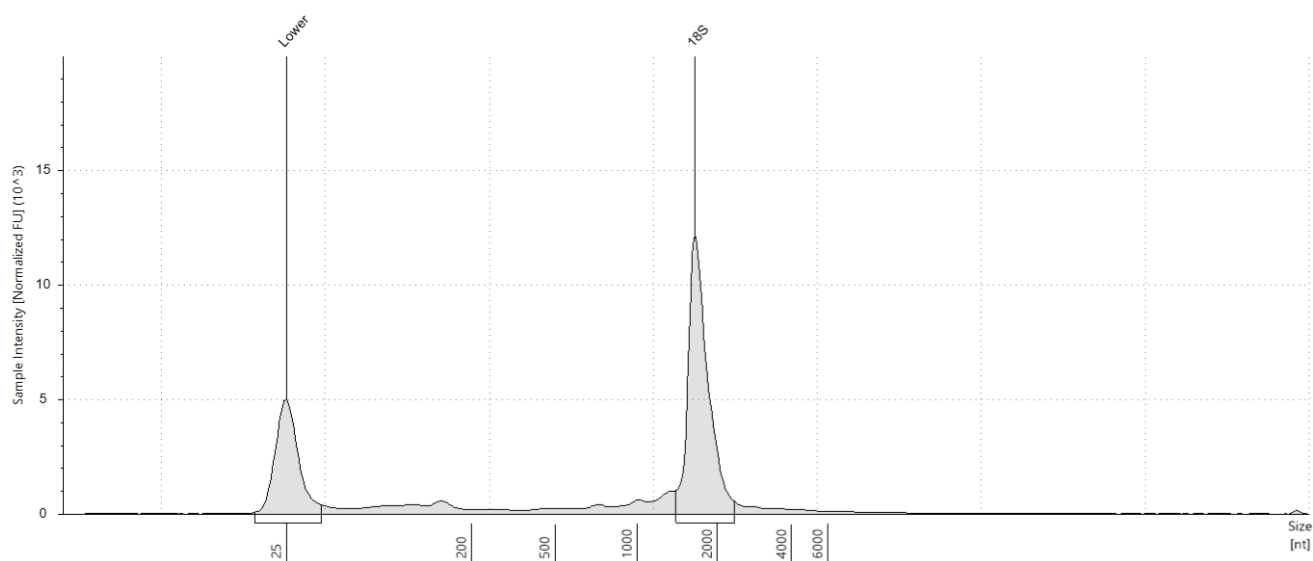
E2: 422**Sample Table**

Well	RINe	28S/18S (Area)	Conc. [ng/μl]	Sample Description	Alert	Observations
E2	9.5	-	85.8	422		The upper ribosomal fragment has degraded

Peak Table

Size [nt]	Calibrated Conc. [ng/μl]	Assigned Conc. [ng/μl]	Peak Molarity [nmol/l]	% Integrated Area	Peak Comment	Observations
25	40.0	40.0	4710	-		Lower Marker
1731	45.6	-	77.4	100.00		18S

F2: 434



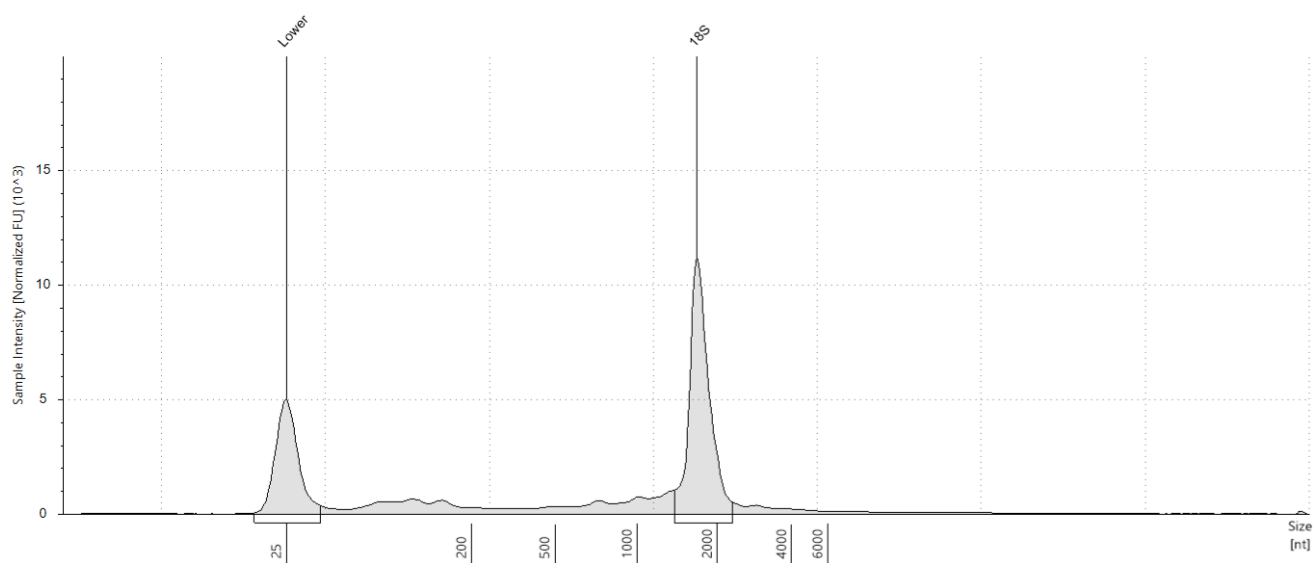
Sample Table

Well	RINe	28S/18S (Area)	Conc. [ng/μl]	Sample Description	Alert	Observations
F2	10.0	-	72.5	434		The upper ribosomal fragment has degraded

Peak Table

Size [nt]	Calibrated Conc. [ng/μl]	Assigned Conc. [ng/μl]	Peak Molarity [nmol/l]	% Integrated Area	Peak Comment	Observations
25	40.0	40.0	4710	-		Lower Marker
1651	47.2	-	84.2	100.00		18S

G2: 405

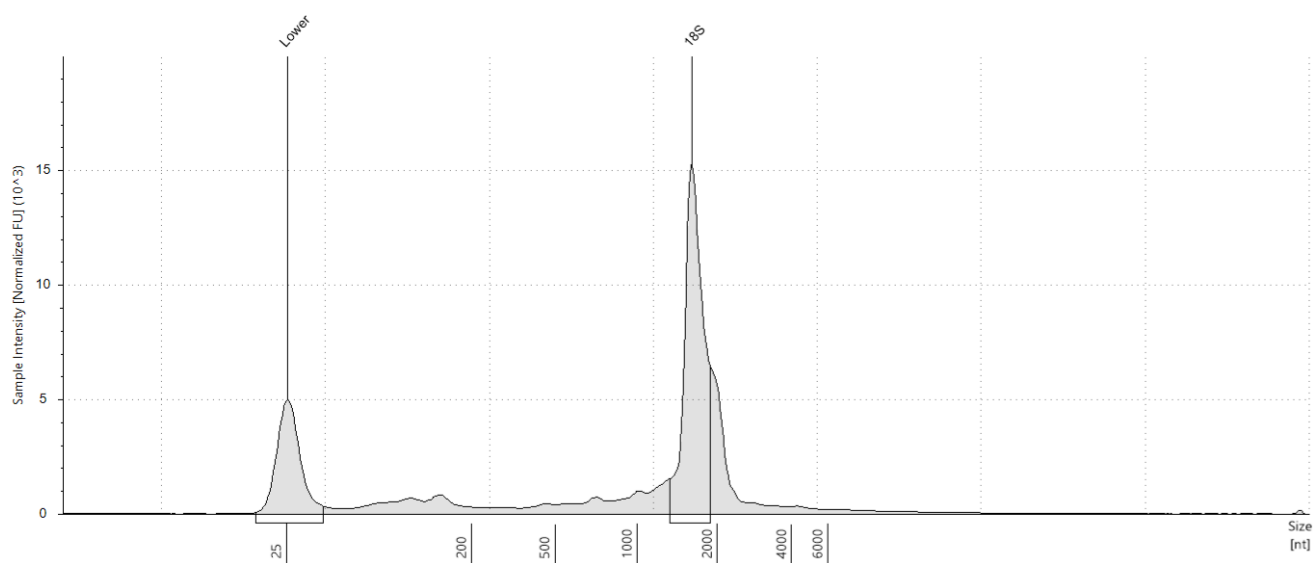


Sample Table

Well	RINe	28S/18S (Area)	Conc. [ng/μl]	Sample Description	Alert	Observations
G2	9.9	-	75.4	405		The upper ribosomal fragment has degraded

Peak Table

Size [nt]	Calibrated Conc. [ng/μl]	Assigned Conc. [ng/μl]	Peak Molarity [nmol/l]	% Integrated Area	Peak Comment	Observations
25	40.0	40.0	4710	-		Lower Marker
1680	43.6	-	76.3	100.00		18S

H2: 1510**Sample Table**

Well	RINe	28S/18S (Area)	Conc. [ng/μl]	Sample Description	Alert	Observations
H2	9.9	-	108	1510		The upper ribosomal fragment has degraded

Peak Table

Size [nt]	Calibrated Conc. [ng/μl]	Assigned Conc. [ng/μl]	Peak Molarity [nmol/l]	% Integrated Area	Peak Comment	Observations
25	40.0	40.0	4710	-		Lower Marker
1591	55.2	-	102	100.00		18S