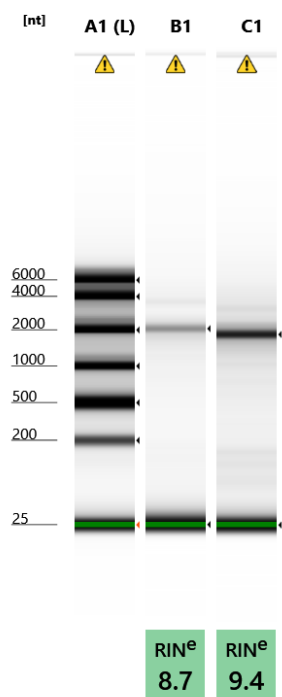


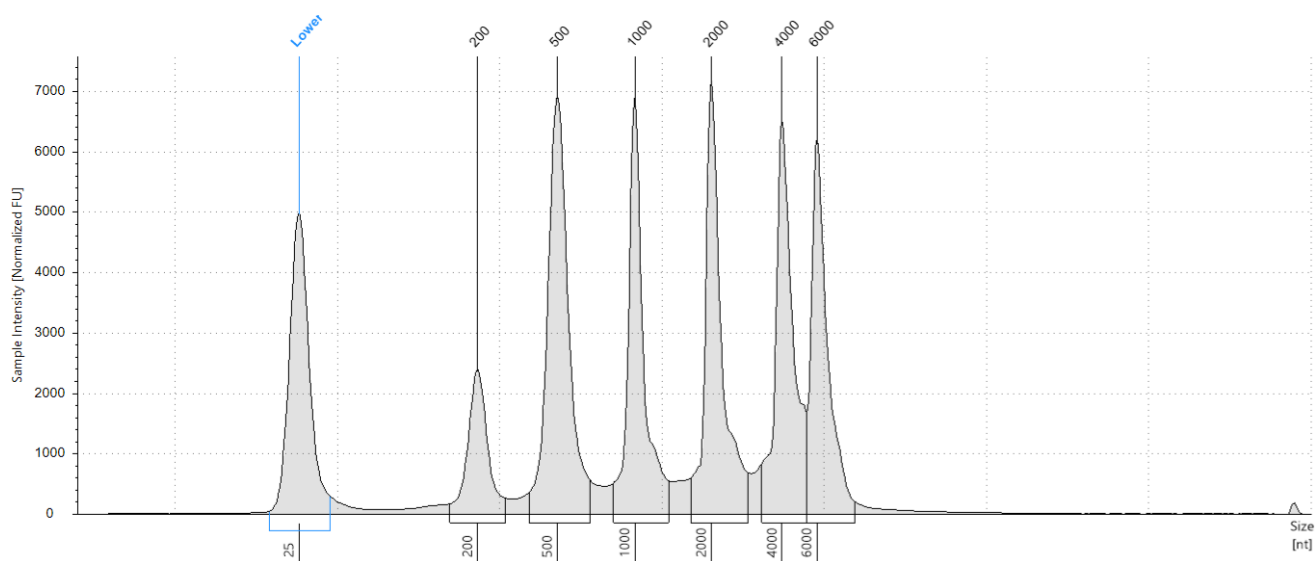
Filename: 2020-10-01 - 11.21.05.RNA



Default image (Contrast 100%)

### Sample Info

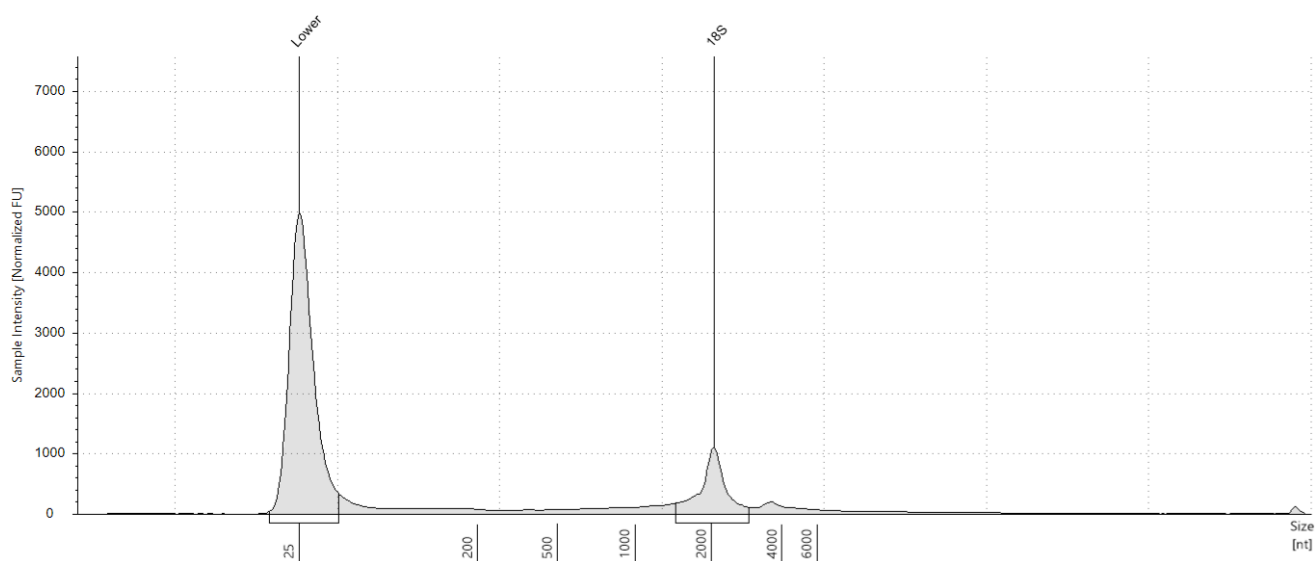
Well	RINe	28S/18S (Area)	Conc. [ng/μl]	Sample Description	Alert	Observations
A1	-	-	161	Ladder	⚠	Caution! Expired ScreenTape device (used after two weeks of first use); Ladder
B1	8.7	-	13.2	1576	⚠	Caution! Expired ScreenTape device (used after two weeks of first use); Sample concentration outside functional range for RINe and the assay; The upper ribosomal fragment has degraded
C1	9.4	-	29.9	1632	⚠	Caution! Expired ScreenTape device (used after two weeks of first use); The upper ribosomal fragment has degraded

**A1: Ladder****Sample Table**

Well	RINe	28S/18S (Area)	Conc. [ng/μl]	Sample Description	Alert	Observations
A1	-	-	161	Ladder	⚠	Caution! Expired ScreenTape device (used after two weeks of first use); Ladder

**Peak Table**

Size [nt]	Calibrated Conc. [ng/μl]	Assigned Conc. [ng/μl]	Peak Molarity [nmol/l]	% Integrated Area	Peak Comment	Observations
25	40.0	40.0	4710	-		Lower Marker
200	11.1	-	164	7.48		
500	34.1	-	201	22.93		
1000	24.7	-	72.8	16.63		
2000	27.6	-	40.6	18.56		
4000	27.0	-	19.9	18.16		
6000	24.2	-	11.8	16.24		

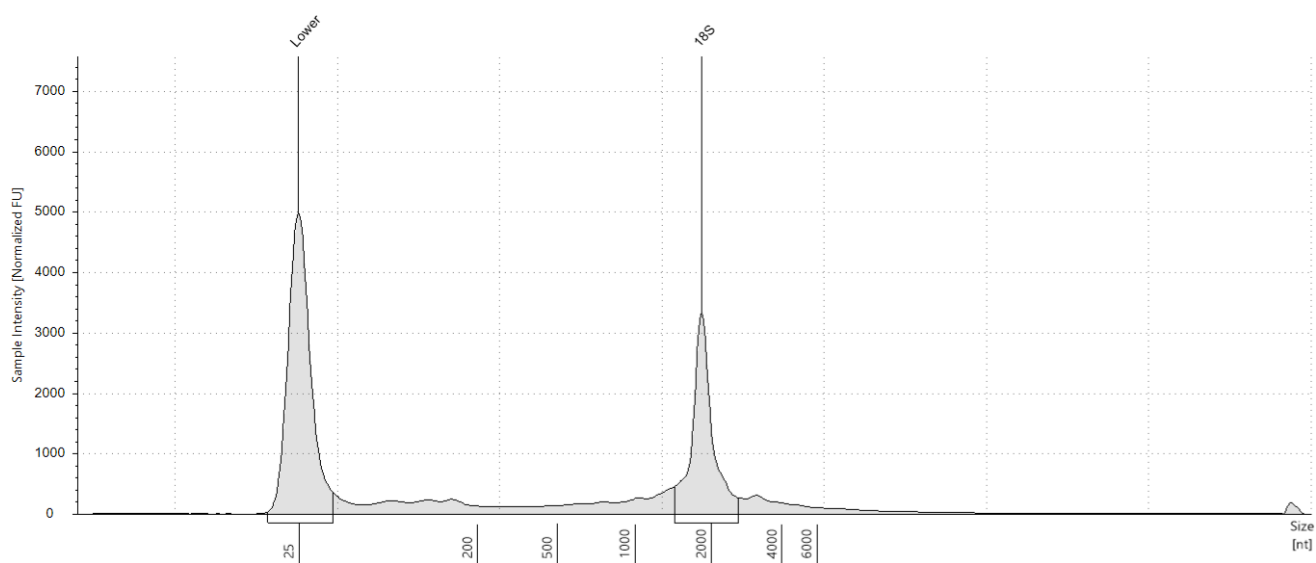
**B1: 1576****Sample Table**

Well	RINe	28S/18S (Area)	Conc. [ng/μl]	Sample Description	Alert	Observations
B1	8.7	-	13.2	1576	⚠	Caution! Expired ScreenTape device (used after two weeks of first use); Sample concentration outside functional range for RINe and the assay; The upper ribosomal fragment has degraded

**Peak Table**

Size [nt]	Calibrated Conc. [ng/μl]	Assigned Conc. [ng/μl]	Peak Molarity [nmol/l]	% Integrated Area	Peak Comment	Observations
25	40.0	40.0	4710	-		Lower Marker
2047	5.06	-	7.27	100.00		18S

## C1: 1632



Sample Table

Well	RINe	28S/18S (Area)	Conc. [ng/μl]	Sample Description	Alert	Observations
C1	9.4	-	29.9	1632	⚠	Caution! Expired ScreenTape device (used after two weeks of first use); The upper ribosomal fragment has degraded

Peak Table

Size [nt]	Calibrated Conc. [ng/μl]	Assigned Conc. [ng/μl]	Peak Molarity [nmol/l]	% Integrated Area	Peak Comment	Observations
25	40.0	40.0	4710	-		Lower Marker
1838	13.7	-	21.9	100.00		18S